



60 Newlyn Drive, M33 3LE

£1,500 PCM

www.jordanfishwick.co.uk





jordan fishwick

- SEMI DETACHED
- PART FURNISHED
- COUNCIL TAX BAND C
- THREE BEDROOMS
- OFF ROAD PARKING
- EPC RATING D

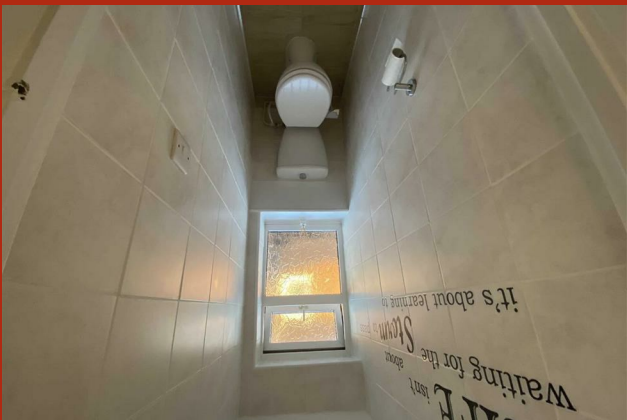
*** AVAILABLE NOW *** Newlyn Drive, Sale

Jordan Fishwick are delighted to bring to the rental market a stunning three-bedroom semi-detached property with an enclosed garden to the rear and a private driveway - this delightful home offers spacious family accommodation and boasts a favourable location within catchment for Brooklands Primary School and Sale Grammar.

The property has been lovingly' modernised to a high specification throughout and briefly comprises; covered porch, entrance hallway, extended open plan lounge/ dining room with a light, bright and airy' feel with French doors leading straight onto the garden, a brand new kitchen with integrated appliances and a separate dining or snug area.

To the first floor there are three bedrooms, the master with fitted wardrobes and a modern family bathroom with shower over bath and separate WC. Externally, the property has an enclosed garden to the rear, front garden and driveway with space for two cars.

Call the office on 0161 976 5080 to arrange a viewing. Part furnished.





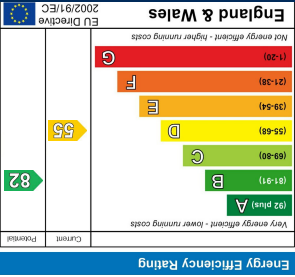


Floor Plans

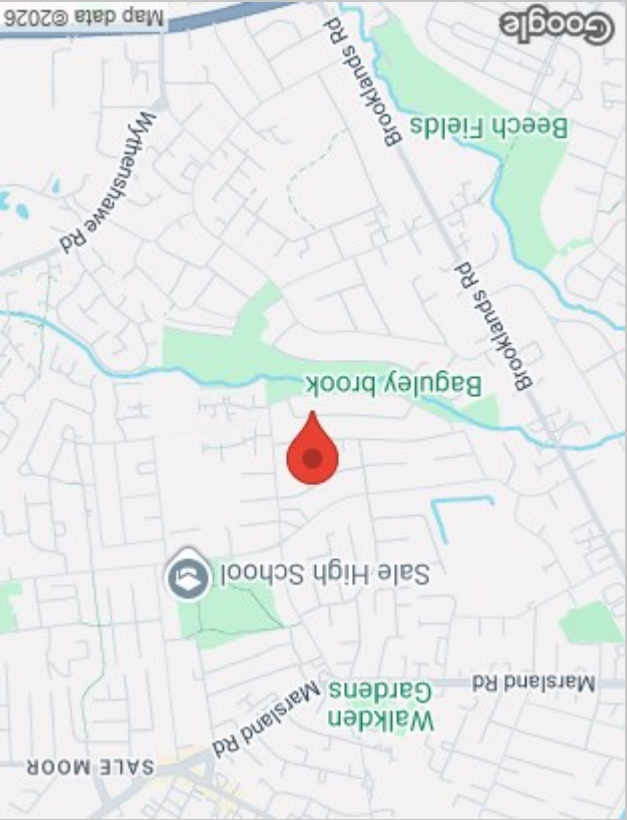
Viewing

Please contact our Sale Managed Office on 01619291994 if you wish to arrange a viewing appointment for this property or require further information.

The particulars are set out as a general outline only for the guidance of intended purchasers or lessees, and do not constitute, any part of a contract. Nothing in these particulars shall be deemed to be a statement that the property is in good structural condition or otherwise nor that any of the services, appliances, equipment or facilities are in good working order. Purchasers should satisfy themselves of this prior to purchasing.



Energy Performance Graph



Location Map