



Norwich Road, Attleborough NR17 2JY

welcome to

Norwich Road, Attleborough

A bright and airy three-bedroom home, set on a generous plot with ample parking. With versatile accommodation across two levels and attractive gardens that provide plenty of potential, this property offers comfortable, flexible living in a desirable location.



Description

This impressive three-bedroom home offers an exceptional blend of space, comfort, and modern living, all set on a generous and well-proportioned plot.

The property makes a strong first impression, with the main parking area located at the rear, providing ample space for up to six cars, along with room for both a caravan and a motorhome.

There are also two garages, a greenhouse, and a shed, offering excellent storage and workshop potential. Conveniently, the side of the garage is equipped with dedicated electrical connections for a motorhome and caravan.

Inside, the downstairs benefits from parquet flooring throughout, giving the home a warm, contemporary feel while offering durability and comfort.

A separate side entrance leads directly to the area housing the boiler and additional storage, providing practical access without passing through the main living spaces.

At the heart of the home is a modern, well-equipped kitchen fitted with a range of wall and base units and offering excellent worktop space.

To the rear, the home enjoys approximately one-third of an acre of land, creating a wonderful outdoor retreat. The grounds include established pear, apple, and plum trees, along with two mature nut trees, giving the garden an orchard-like charm.

Dining Room

Front facing bay window space for 8 seating dining table complete with parquet flooring and feature fire place

Living Room

Front facing bay window and parquet flooring

Kitchen

Modern kitchen with rear facing window, plenty or storage space and worktop area complete with tile flooring

Bathroom

Complete with sink with storage and bath with a separate room for the W.C

Bedroom One

Double bedroom with side facing window with additional storage

Bedroom Two

Double bedroom with side view window and built in wardrobes with additional storage

Landing

Large open area with space for a small office, Internet connection and additional socks available complete with a front facing window

Bedroom Three

Double bedroom located on the ground floor with rear facing window

Shower Room

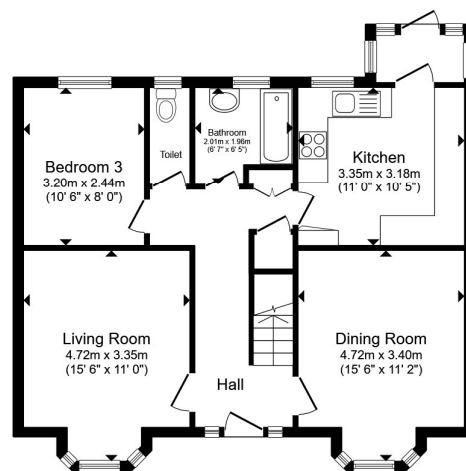
Rear facing window with shower, sink and W.C

Rear Garden

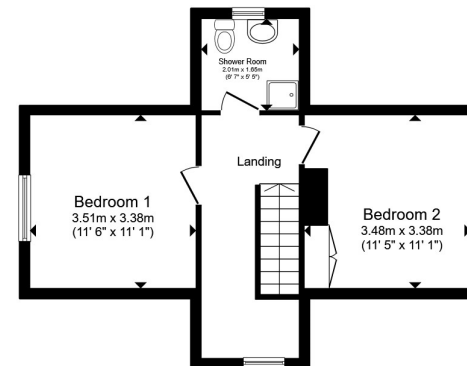
Large shingle with double side gate allowing for additional parking. There is also a garage in the rear garden as well as a good size lawn area

Front Garden

Large shingle driveway area space for multiple vehicles



Ground Floor



First Floor

Total floor area 102.7 m² (1,106 sq.ft.) approx

This floor plan is for illustrative purposes only. It is not drawn to scale. Any measurements, floor areas (including any total floor area), openings and orientation are approximate. No details are guaranteed, they cannot be relied upon for any purpose and they do not form part of any agreement. No liability is taken for any error, omission or misstatement. A party must rely upon its own inspection(s). Powered by www.propertybox.io


william
h brown



view this property online williamhbrown.co.uk/Property/ATB110119



welcome to

Norwich Road, Attleborough

- Guide Price £375,000 - £400,000
- CHAIN FREE
- 1/3 Acre Land approx
- Garage
- Summer House

Tenure: Freehold EPC Rating: E
Council Tax Band: C

£375,000



Please note the marker reflects the
postcode not the actual property

view this property online williamhbrown.co.uk/Property/ATB110119



Property Ref:
ATB110119 - 0004

1. MONEY LAUNDERING REGULATIONS Intending purchasers will be asked to produce identification documentation at a later stage and we would ask for your co-operation in order that there is no delay in agreeing the sale. 2. These particulars do not constitute part or all of an offer or contract. 3. The measurements indicated are supplied for guidance only and as such must be considered incorrect. Potential buyers are advised to recheck measurements before committing to any expense. 4. We have not tested any apparatus, equipment, fixtures or services and it is in the buyers interest to check the working condition of any appliances. 5. Where an EPC, or a Home Report (Scotland only) is held for this property, it is available for inspection at the branch by appointment. If you require a printed version of a Home Report, you will need to pay a reasonable production charge reflecting printing and other costs. 6. We are not able to offer an opinion either written or verbal on the content of these reports and this must be obtained from your legal representative. 7. Whilst we take care in preparing these reports, a buyer should ensure that his/her legal representative confirms as soon as possible all matters relating to title including the extent and boundaries of the property and other important matters before exchange of contracts.

William H Brown is a trading name of Sequence (UK) Limited which is registered in England and Wales under company number 4268443, Registered Office is Cumbria House, 16-20 Hockliffe Street, Leighton Buzzard, Bedfordshire, LU7 1GN. VAT Registration Number is 500 2481 05.



william h brown



01953 452990



Attleborough@williamhbrown.co.uk



Exchange Street, ATTLEBOROUGH, Norfolk,
NR17 2AB



williamhbrown.co.uk