



PEAR
PROPERTIES



Columbia House, Romany Road
Worthing

Guide Price £165,000



Columbia House, Worthing

Modern one bedroom apartment with open plan kitchen, integrated appliances, stylish bathroom, allocated parking, and no onward chain.

Council Tax band: A

Tenure: Leasehold

EPC Energy Efficiency Rating: C

EPC Environmental Impact Rating: C

- Modern One Bedroom Apartment
- Modern Fitted Bathroom
- Open Plan Kitchen / Living Room
- Kitchen With Integrated Appliances
- One Allocated Parking Space
- Well Presented Throughout
- Please Take A Look At Our Virtual Tour
- Chain Free



Bathroom

6' 2" x 5' 7" (1.89m x 1.69m)

Modern partially tiled fitted bathroom comprising bath with over bath shower, hand wash basin, WC and heated towel rail

Hallway

9' 9" x 5' 6" (2.98m x 1.68m)

Open Plan Kitchen / Living Room

14' 3" x 9' 5" (4.35m x 2.88m)

Bright open plan kitchen / living. Modern fitted kitchen with a range of base and wall units and integrated appliances

Bedroom

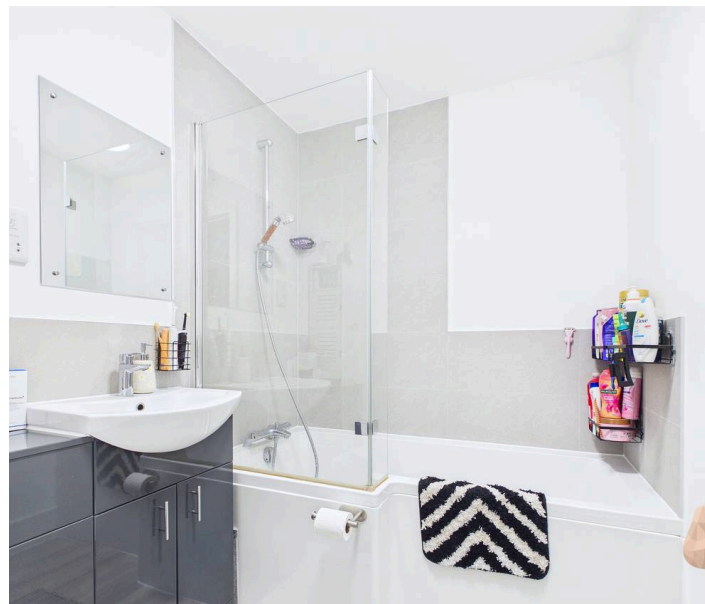
15' 11" x 9' 5" (4.84m x 2.86m)

Good sized double bedroom

Allocated parking

1 Parking Space

One allocated parking space



Bathroom
1.89 x 1.69 m
6'2" x 5'6"

Hallway
2.98 x 1.68 m
9'9" x 5'6"



Kitchen / Living Area

2.88 x 4.35 m
9'5" x 14'3"

Bedroom

2.86 x 4.84 m
9'4" x 15'10"

Approximate total area⁽¹⁾
32 m²
345 ft²

(1) Excluding balconies and terraces

Calculations reference the RICS IPMS 3C standard. Measurements are approximate and not to scale. This floor plan is intended for illustration only.

GIRAFFE360





Pear Properties

20 Crabtree Lane, Lancing - BN15 9QP

01903 947337 · hello@pearproperties.uk · pearproperties.uk