



**Price**  
**£415,000**

**Freehold**

2x  1x  3x 

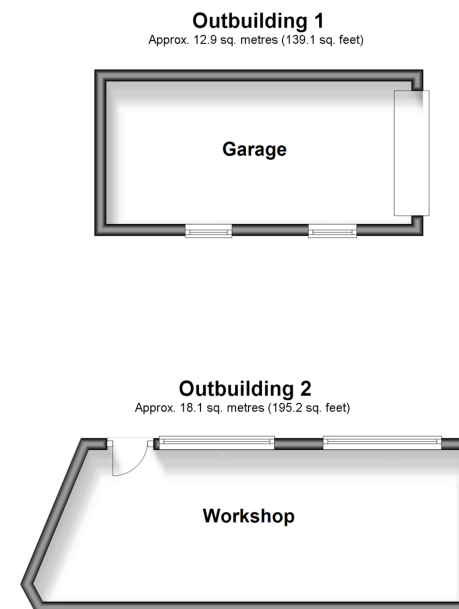
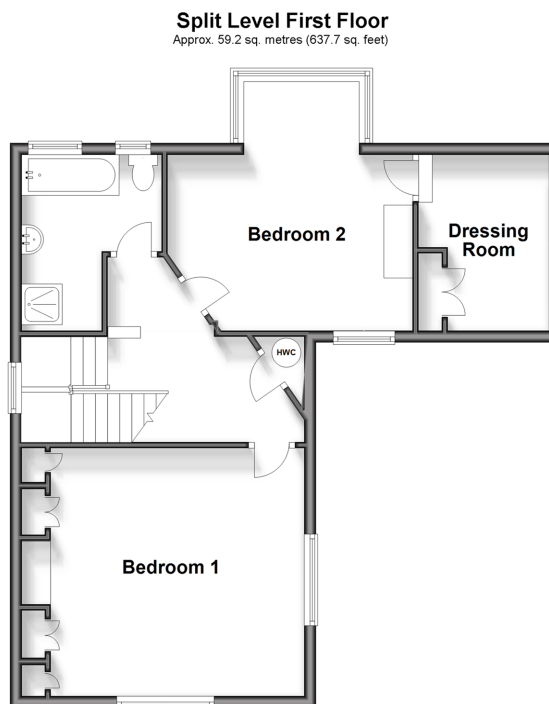
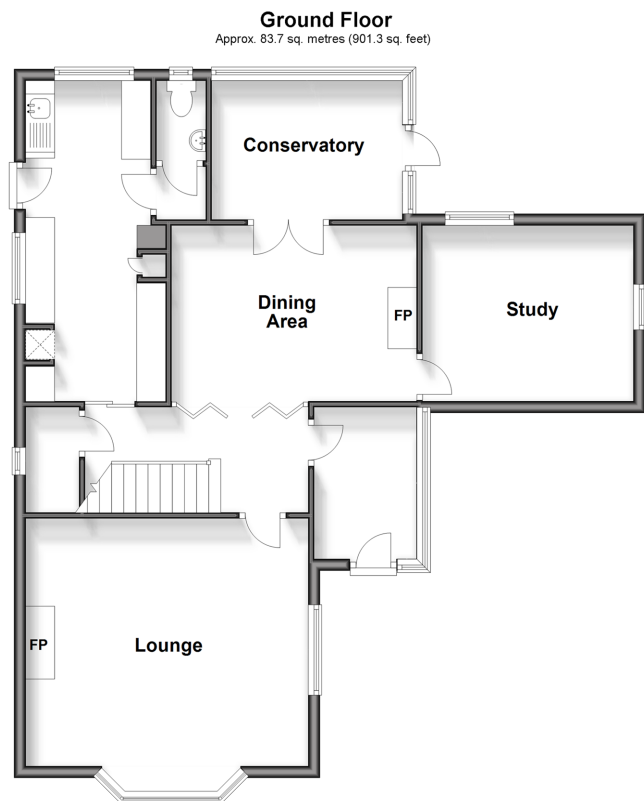
**Dover Road, Walmer,  
Deal, Kent, CT14**

**OVER 60?**

Secure this property  
for up to **59% less!**

*Wards*  
Helping you move forwards





## Accommodation

### GROUND FLOOR

Entrance Porch  
Entrance Hallway  
Lounge : 16'3 x 14'7 (4.96m x 4.45m)  
Kitchen : 18'2 x 8'0 (5.54m x 2.44m)  
Cloakroom  
Dining Area : 12'9 x 8'11 (3.89m x 2.72m)  
Conservatory : 11'8 x 8'7 (3.56m x 2.62m)  
Study : 11'11 x 8'11 (3.63m x 2.72m)

### SPLIT LEVEL FIRST FLOOR

LANDING  
Bathroom  
Bedroom 2: 13'4 x 12'11 (4.07m x 3.94m)  
Dressing Room : 9'1 x 7'7 (2.77m x 2.31m)  
Bedroom 1: 14'10 x 14'1 (4.52m x 4.30m)

### OUTBUILDING 1

Garage

### OUTBUILDING 2

Workshop

### OUTSIDE

Driveway  
Front and Rear Garden



## Main features

- Stunning views to the front stretching to Ramsgate
- Plenty of character within the property
- Flexible accommodation to suit your needs
- Ideal family house with garage
- Offered chain free



### Nearest Schools

Primary Schools: The Downs C of E Primary 1.4 miles, St Mary's Catholic Primary 1.5 miles, Deal Parochial C of E Primary 1.5 miles

Secondary Schools: Learning Opportunities Centre



### Transport Information

Train Stations: Walmer 0.8 miles, Deal 2.5 miles, Martin Mill 2.8 miles



### Address

Dover Road, Walmer, Deal, Kent, CT14



### Directions

For directions to this property please contact us.





Call Deal Branch 01304 361420 ■ [wardsofkent.co.uk](http://wardsofkent.co.uk)



- If buying to let, the energy rating will need to be improved to at least 'E' rating before you can let the property
- Appliances & services are untested, dimensions are approximate and floor plans are not to scale

- Legal advice should be taken to verify fixtures/fittings, planning, alterations and/or lease details
- Through a Homewise Home For Life Plan people aged 60+ can secure this property for up to 50% less, by purchasing a Lifetime Lease.



10632713/20250708/BG/LB1