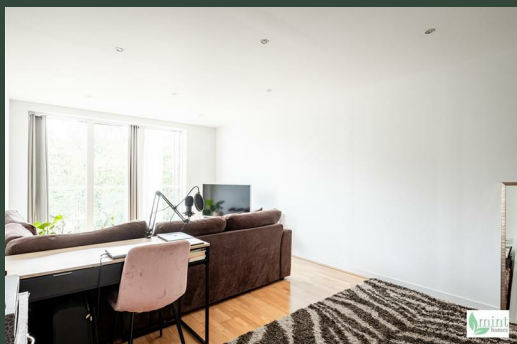
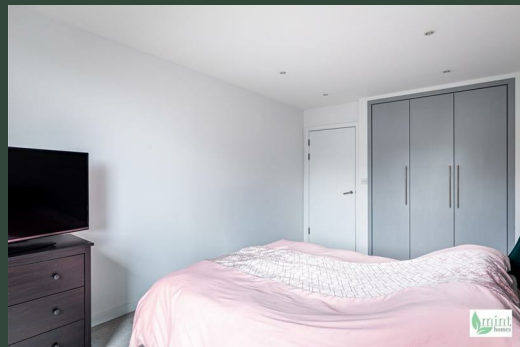


204 The Heart
Walton-On-Thames
KT12 1GB





204 The Heart
£220,000

Local Authority

Council Tax Band

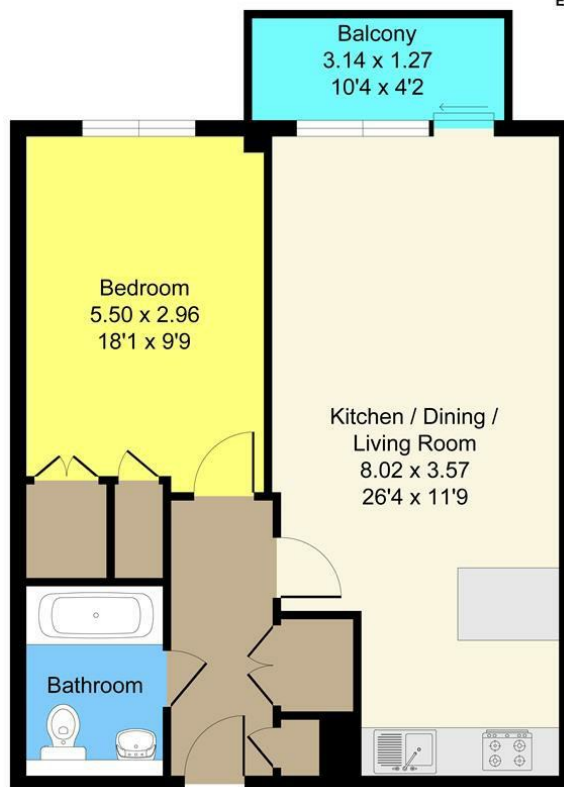
C

Directions

Energy Efficiency Rating		Current	Potential
Very energy efficient - lower running costs			
(92 plus)	A		
(81-91)	B		
(69-80)	C	75	
(55-68)	D		
(39-54)	E		
(21-38)	F		
(1-20)	G		
Not energy efficient - higher running costs			
England & Wales		EU Directive 2002/91/EC	



Agents Note: Whilst every care has been taken to prepare these particulars, they are for guidance purposes only. All measurements are approximate and are for general guidance purposes only and whilst every care has been taken to ensure their accuracy, they should not be relied upon and potential buyers/tenants are advised to recheck the measurements



Second Floor

Marketed By Mint Homes Ltd

TOTAL FLOOR AREA : 52.77 sq.m. (568 sq.ft.) approx.

Whilst every attempt has been made to ensure the accuracy of the information contained here, measurements of doors, windows, rooms and any other items are approximate and no responsibility is taken by any error.

Produced By Planpixel.co.uk



Mint Homes
14 Nicholas Gardens
Pyrford
Surrey
GU22 8SD



Contact

01932 336177

hello@minthomes.uk

minthomes.uk

