



Flat (EPC Rating: D)

# SINCLAIR ROAD LONDON, W14 0NH

Per month

## £1,800 Per

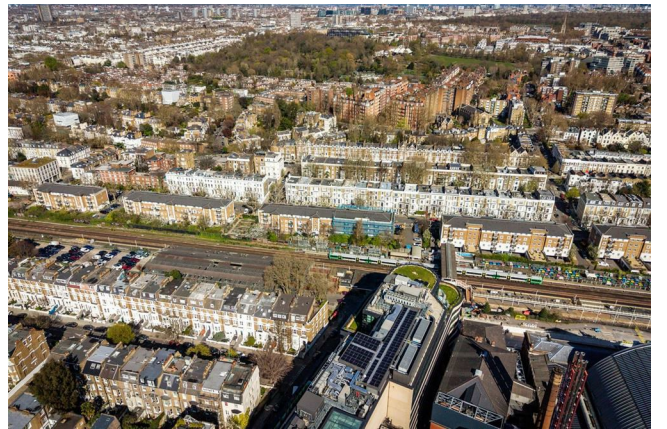
ALEXANDER STEER  
Estate Agents

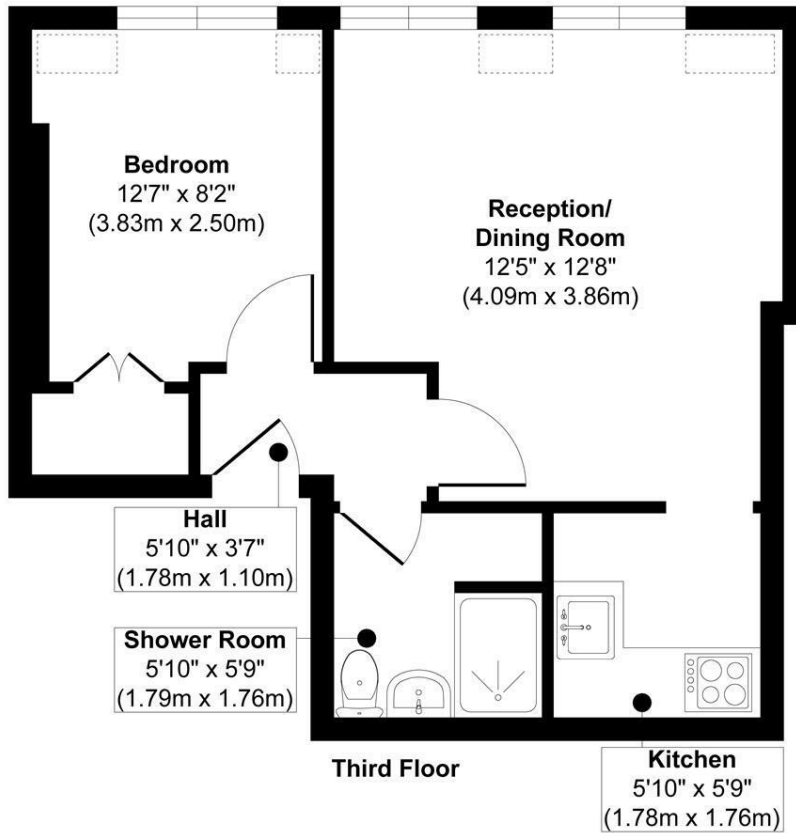


# 1 BEDROOM FLAT LOCATED IN LONDON

A wonderful, bright and spacious one bedroom converted flat situated on the top floor of an attractive Victorian villa moments from Kensington Olympia and in the heart of Brook Green. Comprising a generous double bedroom complete with built in storage, a large open-plan kitchen/reception and a modern bathroom suite.

Sinclair Road is a quiet, residential street with uniform, attractive Victorian architecture. Located on the doorstep of Kensington Olympia it stands to benefit hugely from the redevelopment here and additional amenities that are soon to follow (completion predicted Oct 2026) while still being only moments from the world class amenities already offered at both Westfield, Shepherds Bush & also south east of the flat on Kensington High Street. Sinclair Road is nearby Brook Green & Holland Park offering green space and access to public tennis courts & Blythe Road for an assortment of eclectic local & independent shops/cafes. It is well located for transport in and out of the city with Shepherds Bush Underground (Central Line) and Kensington Olympia (Overground & District Line) within half a mile of the flat.



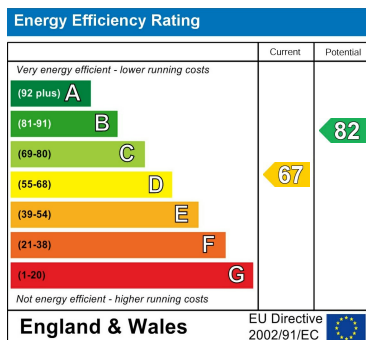


**Approx. Gross Internal Floor Area 345 sq. ft / 32.13 sq. m**

Illustration for identification purposes only, measurements are approximate, not to scale.  
Produced by Elements Property

Council Tax Band

Energy Performance Graph



Call us on

**0203 822 0111**

**hello@alexandersteer.co.uk**

**alexandersteer.co.uk**



©ALEXANDERSTEERPROPERTY

Agents Note: Whilst every care has been taken to prepare these particulars, they are for guidance purposes only. All measurements are approximate and are for general guidance purposes only and whilst every care has been taken to ensure their accuracy, they should not be relied upon and potential buyers are advised to recheck the measurements.