



The Granary, Island Farm Kirton Road,  
Egmanton, Newark, NG22 0HF

**£550,000**  
Tel: 01636 611 811

 **RICHARD  
WATKINSON**  
PARTNERS  
Surveyors, Estate Agents, Valuers, Auctioneers

Well positioned in the delightful village of Egmonton this superb three-storey barn conversion offers a unique blend of character and modern living. Set within beautifully landscaped gardens, this property provides a tranquil retreat, perfect for families or those seeking a peaceful lifestyle.

Upon entering, there is a Hallway and WC, two spacious reception rooms, including an impressive 32-foot lounge with vaulted ceiling and exposed beams and an impressive brick built fireplace with multi fuel stove. The separate dining room is ideal for entertaining guests or enjoying family meals. The heart of the home is undoubtedly the high-quality refitted kitchen, featuring solid wood shaker design units with a comprehensive range of integrated modern appliances, convenient for family living.

This remarkable property boasts four generously sized double bedrooms, ensuring ample space for family and guests. The family bathroom, along with a separate shower room and an en-suite shower to bed 1, caters to all your needs, providing comfort and privacy.

For those with vehicles, the property includes a double garage and two additional driveways with ample parking for up to 4 cars, making it practical for busy households.

With its characterful charm, period features and modern amenities, this barn conversion is a rare find in a picturesque village setting.

The Granary dates from c.1800, converted in 1999. Constructed of brick elevations under a pan tile roof covering. The building retains an interesting external staircase. Forming part of the exclusive Island Farm development in the heart of this picturesque village. The property offers comfortable and characterful living accommodation for a family. Arranged over three levels, the property can be further described as follows:-

## GROUND FLOOR

### ENTRANCE HALL

Wooden front entrance door with glazed light. Open plan to dining room, staircase leading to first floor level, storage cupboard below stairs, stone floor.

### WC

Continuation of the stone flooring from the hallway, modern white suite comprising low suite WC, wash hand basin with mixer tap and vanity cupboard under. Wall mounted heated chrome towel radiator.

### DINING ROOM

15'6 x 10'4 (4.72m x 3.15m )



Double glazed windows to front and rear elevation, stone flooring with electric underfloor heating and two central heating vertical radiators.

### LOUNGE

32' x 13'9 (9.75m x 4.19m )



Solid oak flooring insulated beneath with Kingspan. Double glazed window and French doors to rear elevation. To the frontage there are three original arched reveals with tall, double glazed windows allowing plenty of natural light into the room. Additionally a set of French doors give access to the front garden. The centrepiece to the room is the brick inglenook style fireplace incorporating a timber beam and slate hearth which houses an ESSE, multifuel stove. Heavily beamed ceiling and full height vaulted ceiling with exposed A frame trusses.



## KITCHEN

16'1 x 10'4 (4.90m x 3.15m )  
(plus 4'11 x 4'3)



Double glazed window to front elevation, beamed ceiling and LED downlights. The kitchen was refitted in 2023 with a range of painted, solid wood, shaker design units comprising base cupboards and drawers, including deep hand drawers, with quartz working surfaces above and splashback returns to the wall. Belfast style sink with chrome 4:1 boiling/filtered water mixer tap, eye level wall mounted cupboards. Under unit lighting and low level plinth lighting. Integral appliances include; NEFF wine cooler, automatic washer/dryer, dishwasher, fridge freezer, two NEFF ovens including fan oven and microwave combination oven. NEFF induction hob with quartz to the splashback recess and extractor over with concealing beam. The kitchen units also incorporate two tall larder cupboards. Ceramic tiled floor, wood framed double glazed door leads to the rear garden. Wall mounted vertical radiator.

## FIRST FLOOR

### LANDING

## BEDROOM ONE

13' x 10'7 (3.96m x 3.23m )



Double glazed windows to front and rear elevation. Built in bedroom furniture including a double wardrobe, triple wardrobe and chest of drawers fitted in 2016, radiator, TV point.

## DRESSING ROOM



Dressing room with built-in wall cupboard connecting to en-suite shower room.

## EN-SUITE SHOWER ROOM

7'9 x 5'1 (2.36m x 1.55m )



Fitted with a well appointed, modern white suite including low suite WC, wash hand basin with vanity unit, double shower cubicle with tiled walls, tiled floor with drain and a glass screen door. Fully tiled walls, Velux roof light, designer towel radiator heated from central heating and electric. Opaque glass entrance door.

## BEDROOM TWO

15' x 10'4 (4.57m x 3.15m )



Double glazed windows to front and rear elevation, radiator.

### FAMILY BATHROOM

9'3 x 5'4 (2.82m x 1.63m )



Double glazed window to front elevation, ceramic tiled floor, fully tiled walls and towel radiator heated from central heating and electric. Well appointed fully tiled suite including a panelled bath with hand shower, wash hand basin with mixer tap and vanity cupboard under. Low suite WC, LED ceiling lights.

### SECOND FLOOR

#### LANDING

With Velux roof light.

### BEDROOM THREE

11'9 x 10'1 (3.58m x 3.07m )



Velux roof light to rear elevation, double glazed window to side elevation, radiator, vaulted ceiling, exposed 'A' frame truss, three built in double wardrobes.

### BEDROOM FOUR

11'10 x 10'5 (3.61m x 3.18m )



Vaulted ceiling with exposed 'A' frame roof truss, three built in double wardrobes. Double glazed window to side elevation, Velux roof light, radiator.

### SHOWER ROOM

6'2 x 5'5 (1.88m x 1.65m )



Velux roof light, fully tiled walls, heated towel radiator from central heating and electric, vanity shelves, well appointed white suite includes low suite WC, wash hand basin with vanity cupboard under, tiled shower cubicle with glass screen door and shower over, fully tiled walls.

### OUTSIDE



Tarmacadam forecourt with cobbled edges and drain provides further of road parking for up to two vehicles. There are open plan cobbled parking bays located to the front and side of the property with parking for up to 4

vehicles. Paved terraces and pathways extend to the front, side and rear of the property. Original external staircase enclosed by the brick wall. Landscaped garden area with box hedging and trees. A wooden side gate gives access to the rear garden. Enclosed front courtyard garden with close boarded wooden fence to the boundaries, attractively laid out garden area with paved, patio terrace, low maintenance gravelled area, box hedging and water feature, a wooden gateway leads to the driveway.

To the rear of the property there are enclosed and secluded gardens laid out with paved pathways and patio terrace along the rear of the house. Lawned gardens extend to the rear boundary where there are borders well stocked with trees and shrubs. A laurel hedge row extends along the rear boundary allowing a good degree of privacy. Wooden fences along the front and side complete the enclosure. There is a paved terrace to the rear of the garden which houses a timber built summer house. Enclosed storage area with wooden fence and gate conceals the oil storage tank and bin storage area.

### DOUBLE GARAGE



Constructed of brick under a pantile roof covering with two sets of wooden centre opening doors to the front. The garages are located in a block opposite to the frontage of The Granary.





impact on a lenders decision. Flood defences have been fitted retrospectively including flood gates for doors, the central heating boiler has been moved, there is a pump, sump and industrial power supply.

### **TENURE**

The property is freehold.

### **SERVICES**

Mains water and electricity are connected to the property. Drainage is by means of a Klargestar septic tank. There is no mains gas available in Egmonton village. The central heating system is oil fired.

### **MORTGAGE**

Mortgage advice is available through our Mortgage Adviser. Your home is at risk if you do not keep up repayments on a mortgage or other loan secured on it.

### **VIEWING**

Strictly by appointment with the selling agents.

### **POSSESSION**

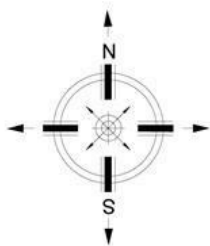
Vacant possession will be given on completion.

### **COUNCIL TAX**

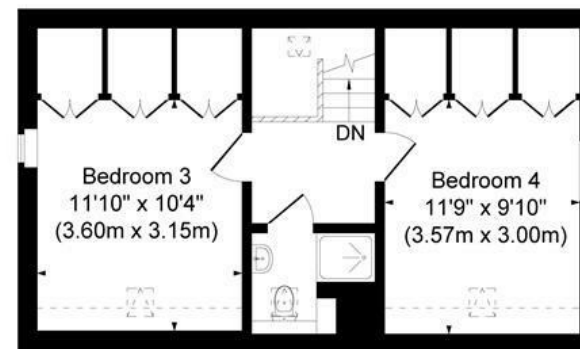
The property comes under Newark and Sherwood District Council Tax Band F.

### **AGENTS NOTE**

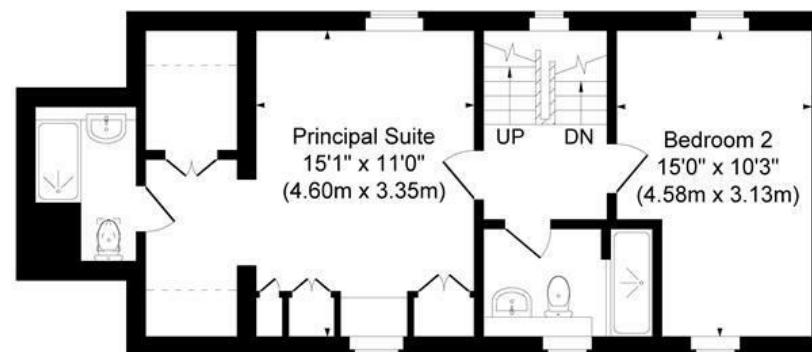
The property is within the curtilage of a Grade II Listed building and subject to the same restrictions. The property was subject to flooding from the adjacent beck in 2019 and 2023. Potential buyers should be aware this could



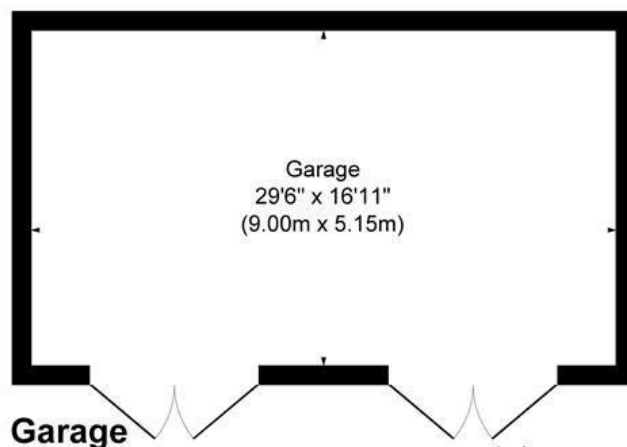
**The Granary, Egmonton**  
**Approximate Gross Internal Area**  
**Main House = 182 sq.m/1959 sq.ft**  
**Garage = 46 sq.m/499 sq.ft**  
**Total = 228 sq.m/2458 sq.ft**



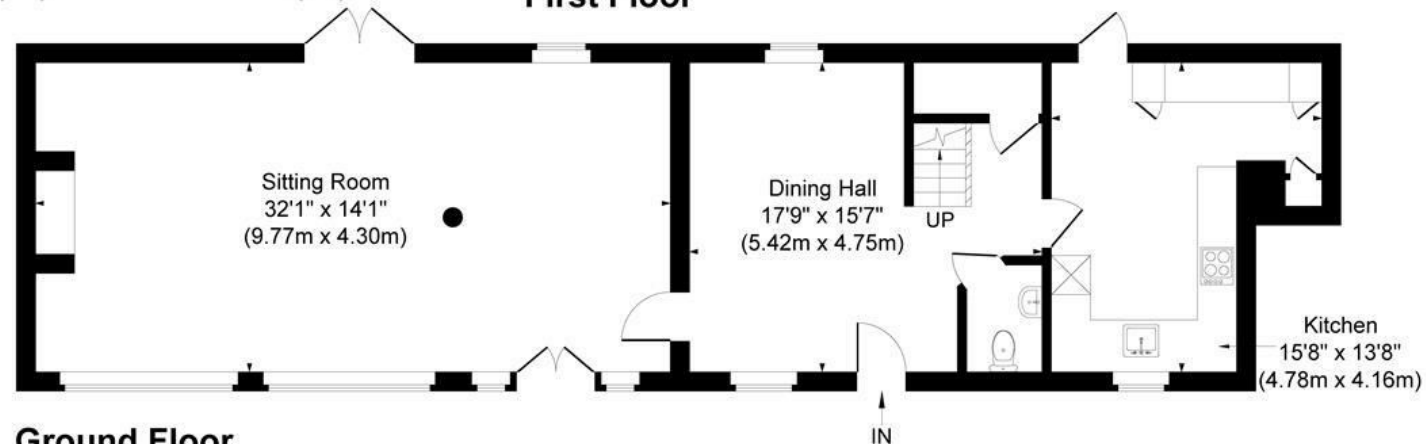
**Second Floor**



**First Floor**



**Garage**



**Ground Floor**

Illustration for identification purposes only, measurements are approximate, not to scale.

JonHolmesPhotography © 2025



Energy Efficiency Rating		
	Current	Potential
Very energy efficient - lower running costs		
(92 plus) A		
(81-91) B		
(69-80) C		
(55-68) D	64	72
(39-54) E		
(21-38) F		
(1-20) G		
Not energy efficient - higher running costs		
England & Wales		EU Directive 2002/91/EC



These particulars, whilst believed to be accurate are set out as a general outline only for guidance and do not constitute any part of an offer or contract. Intending purchasers should not rely on them as statements of representation of fact, but must satisfy themselves by inspection or otherwise as to their accuracy. No person in this firm's employment has the authority to make or give any representation or warranty in respect of the property. Any fixtures and fittings not mentioned in these details are excluded from the sale price. No services or appliances which may have been included in these details have been tested by the selling agent and therefore cannot be guaranteed to be in good working order.

As part of the service we offer we may recommend ancillary services to you such as mortgage advice, solicitors and surveyors which we believe will help with your property transaction. We wish to make you aware that should you decide to proceed we may receive a referral fee or equivalent. This could be a fee, commission, payment or other reward. We will not refer your details unless you have provided consent for us to do so. You are not under any obligation to provide us with your consent or to use any of these services. You are also free to choose an alternative provider.

Thinking of selling? For a FREE no obligation quotation call 01636 611 811



**RICS**



Richard Watkinson & Partners is the trading name of Richard Watkinson Ltd.  
Registered in England. Ltd Registration number: 07140024

25 Stodman Street,  
Newark NG24 1AT  
Tel: 01636 611 811  
Email: [newark@richardwatkinson.co.uk](mailto:newark@richardwatkinson.co.uk)

**RICHARD  
WATKINSON  
PARTNERS**

Surveyors, Estate Agents, Valuers, Auctioneers