



SKYLINE, SL1

£1,000 pcm

A luxury self contained studio on the ninth floor of a popular development in the heart of Slough. The property has wood flooring and plenty of storage throughout.

- Studio Apartment
- Fully Furnished
- Ninth Floor Flat
- Self Contained

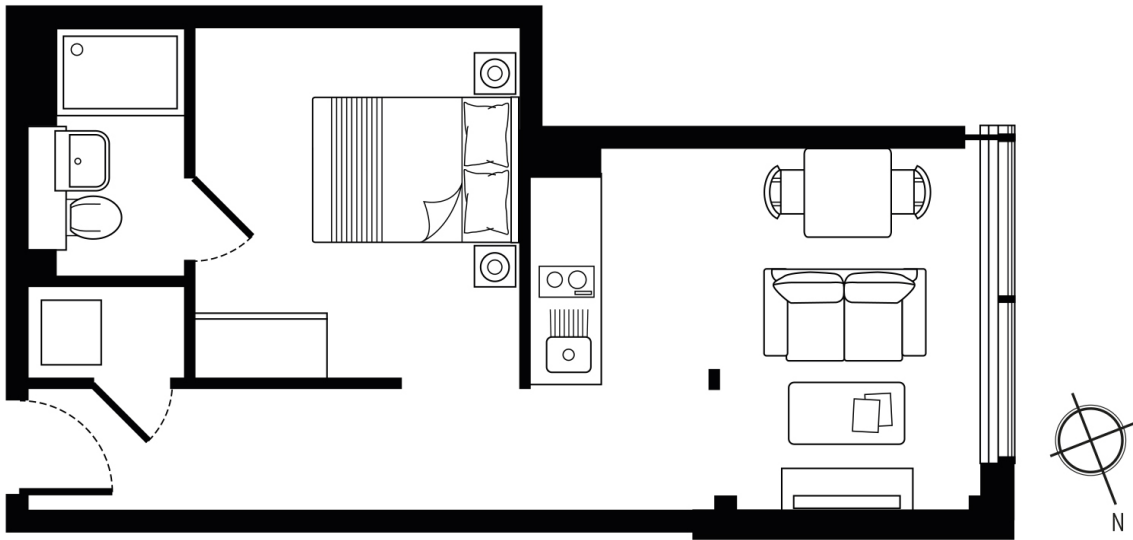


ABOUT THE HOME

The property is situated in the centre of Slough, close to an array of shops and restaurants, while the short distance to Slough mainline station allows for 17 minute journey into central London.







LIVING AREA	4.2 x 3.3m	13'8" x 10'9"
BEDROOM AREA	3.0 x 3.2m	9'9" x 10'5"
TOTAL AREA:	34 sq.M.	365 sq.FT.

LiFE RESIDENTIAL

203 Trentham Court, Victoria
Road, London, W3 6BT
Sales: 020 3668 1112
Lettings: 020 3668 1111

Energy Rating: C. We aim to make our particulars both accurate and reliable. However they are not guaranteed; nor do they form part of an offer or contract. If you require clarification on any points then please contact us, especially if you're traveling some distance to view. Please note that appliances and heating systems have not been tested and therefore no warranties can be given as to their good working order.