



## Crooked Usage, N3

£2,650,000

An imposing six bedroom, five bathroom detached family home complete with granite flooring, impressive high ceilings, a stunning gallery entrance hall with both a main residence and annexe accommodation with private access.

Crooked Usage is a sought after street situated off Hendon Lane, within close proximity of fantastic amenities. Finchley Central station and Temple Fortune are also walking distance from the property as is public transport and within catchment for highly regarded schooling.

### Features

- Six Bedrooms
- Gallery Entrance Hall
- Annexe
- Five Bathrooms
- Parking For Multiple Vehicles
- Chain Free



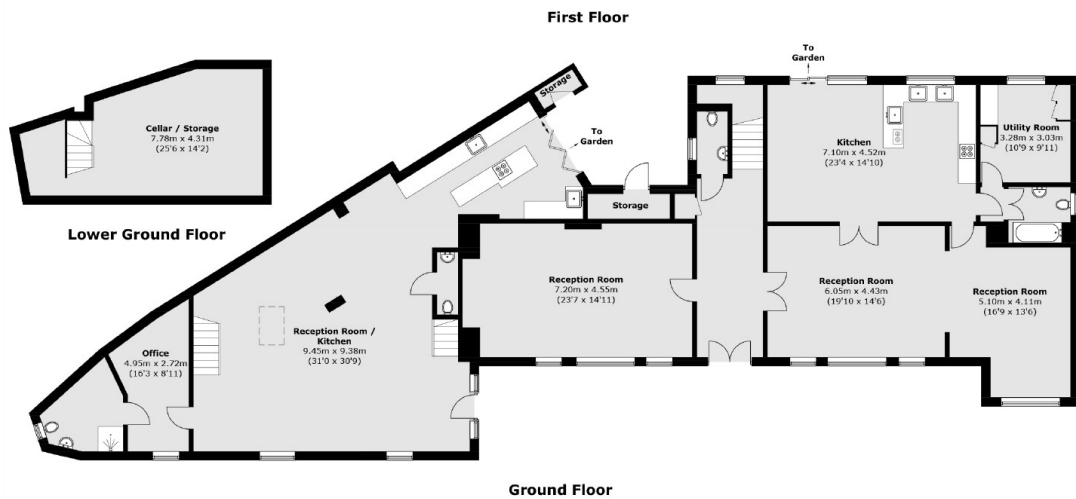
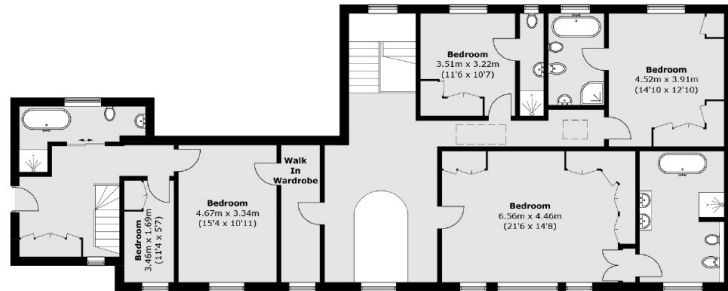
## **Crooked Usage, N3**

This sizeable home offers a drawing room, dining room joining to a further reception room & main kitchen with access to the rear patio garden. The annexe has an open plan kitchen and reception as well as a bedroom with en-suite bathroom.

The basement level allows for multiple purposes such as a home gym, office or cinema room. Externally the properties carriage driveway provides parking for at least four vehicles.



# Crooked Usage, London, N3



Total area (approx.): 462.4 sq. m (4,977.2 sq. ft)  
 External Storage (approx.): 3.5 sq. m (37.7 sq. ft)