

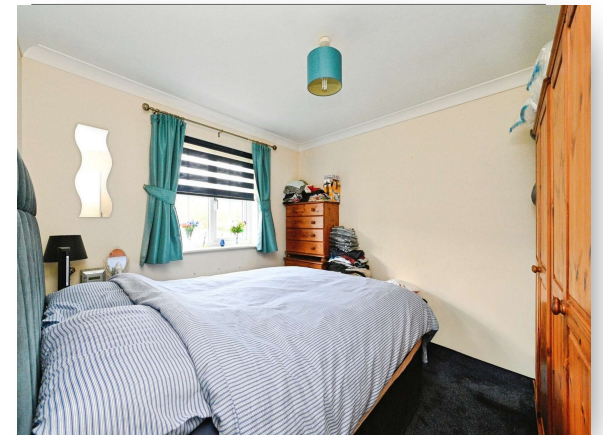


**Common View, Snettisham, PE31 7JG**

**welcome to**

**Common View, Snettisham**

Semi detached bungalow opposite Ken Hill Estate woodland in Snettisham. 2 double bedrooms, lounge, kitchen, conservatory and bathroom. Solar panels, electric heating, front and rear gardens, parking and garage en-bloc.





### Entrance Hall

### Kitchen

9' 8" x 8' 9" ( 2.95m x 2.67m )

### Lounge

15' 10" x 9' 9" ( 4.83m x 2.97m )

### Sun Room

11' 1" x 7' 8" ( 3.38m x 2.34m )

### Bedroom One

11' 3" x 9' 9" ( 3.43m x 2.97m )

### Bedromm Two

10' 10" x 9' 8" ( 3.30m x 2.95m )

### Bathroom

### En-bloc Garage

### Gardens

This floor plan is for illustrative purposes only. It is not drawn to scale. Any measurements, floor areas (including any total floor area), openings and orientation are approximate. No details are guaranteed, they cannot be relied upon for any purpose and they do not form part of any agreement. No liability is taken for any error, omission or misstatement. A party must rely upon its own inspection(s). Powered by [www.focalagent.com](http://www.focalagent.com)

welcome to

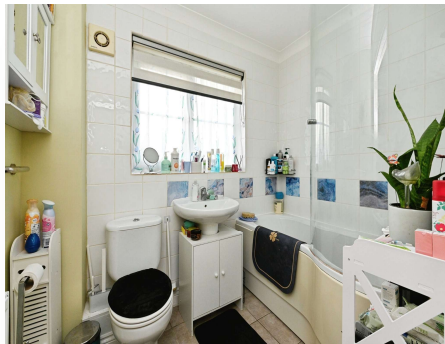
## Common View, Snettisham

- Semi detached bungalow in popular Snettisham
- Opposite Ken Hill Estate woodland and coastal walks
- 2 double bedrooms and bathroom
- Lounge, kitchen and conservatory
- Solar panels and electric heating

Tenure: Freehold EPC Rating: B

Council Tax Band: B

# £270,000



**view this property online** [williamhbrown.co.uk/Property/HUN106894](http://williamhbrown.co.uk/Property/HUN106894)

Please note the marker reflects the postcode not the actual property



Property Ref:  
HUN106894 - 0008

1. MONEY LAUNDERING REGULATIONS Intending purchasers will be asked to produce identification documentation at a later stage and we would ask for your co-operation in order that there is no delay in agreeing the sale. 2. These particulars do not constitute part or all of an offer or contract. 3. The measurements indicated are supplied for guidance only and as such must be considered incorrect. Potential buyers are advised to recheck measurements before committing to any expense. 4. We have not tested any apparatus, equipment, fixtures or services and it is in the buyers interest to check the working condition of any appliances. 5. Where an EPC, or a Home Report (Scotland only) is held for this property, it is available for inspection at the branch by appointment. If you require a printed version of a Home Report, you will need to pay a reasonable production charge reflecting printing and other costs. 6. We are not able to offer an opinion either written or verbal on the content of these reports and this must be obtained from your legal representative. 7. Whilst we take care in preparing these reports, a buyer should ensure that his/her legal representative confirms as soon as possible all matters relating to title including the extent and boundaries of the property and other important matters before exchange of contracts.

William H Brown is a trading name of Sequence (UK) Limited which is registered in England and Wales under company number 4268443. Registered Office is Cumbria House, 16-20 Hockliffe Street, Leighton Buzzard, Bedfordshire, LU7 1GN. VAT Registration Number is 500 2481 05.



william h brown



**01485 534506**



[hunstanton@williamhbrown.co.uk](mailto:hunstanton@williamhbrown.co.uk)



40 Westgate, HUNSTANTON, Norfolk, PE36 5EL



**[williamhbrown.co.uk](http://williamhbrown.co.uk)**