



Eastbury Grove, London, W4
Guide Price £1,150,000

WHITMAN & CO.
SALES · LETTINGS · COMMERCIAL



A tidy three-bedroom period family house with private west-facing garden, ideally located on this sought-after residential street, offering close proximity to numerous amenities.

The property comprises two bedrooms, third bedroom/home office, large loft, bathroom, two reception rooms, 18'10 kitchen/breakfast room, wet room, private 42'7 west-facing garden, with gas fired central heating.

Conveniently situated close to Turnham Green Tube Station, local bus routes, and the exclusive range of shops, bars and restaurants on Chiswick High Road. Offered for sale with no onward chain.



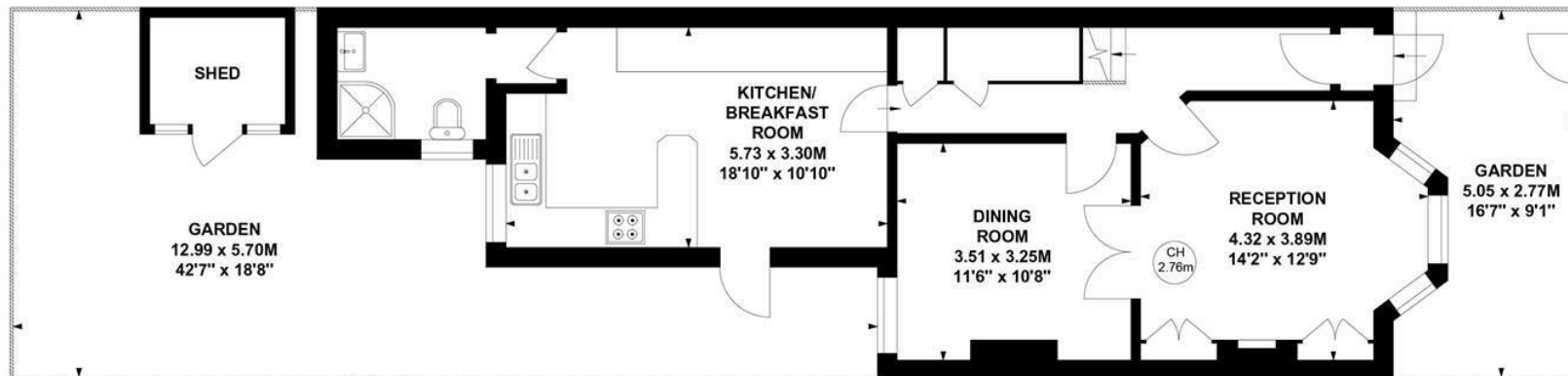
Eastbury Grove, W4

Approximate Gross Internal Area
118.81 sq m / 1279 sq ft

Key :
CH - Ceiling Height



First Floor



Ground Floor

Not to scale, for guidance only and must not be relied upon as a statement of fact.
All measurements and areas are approximate only

- Two reception rooms
- Two/three bedrooms
- 47'7 Private west-facing garden

- 18'10 Kitchen/reception room
- Bathroom
- No onward chain

Tenure - Freehold
Local Authority - Hounslow
Council Tax - Band F

