



Lower Richmond Road, SW14

£3,400 Per calendar month

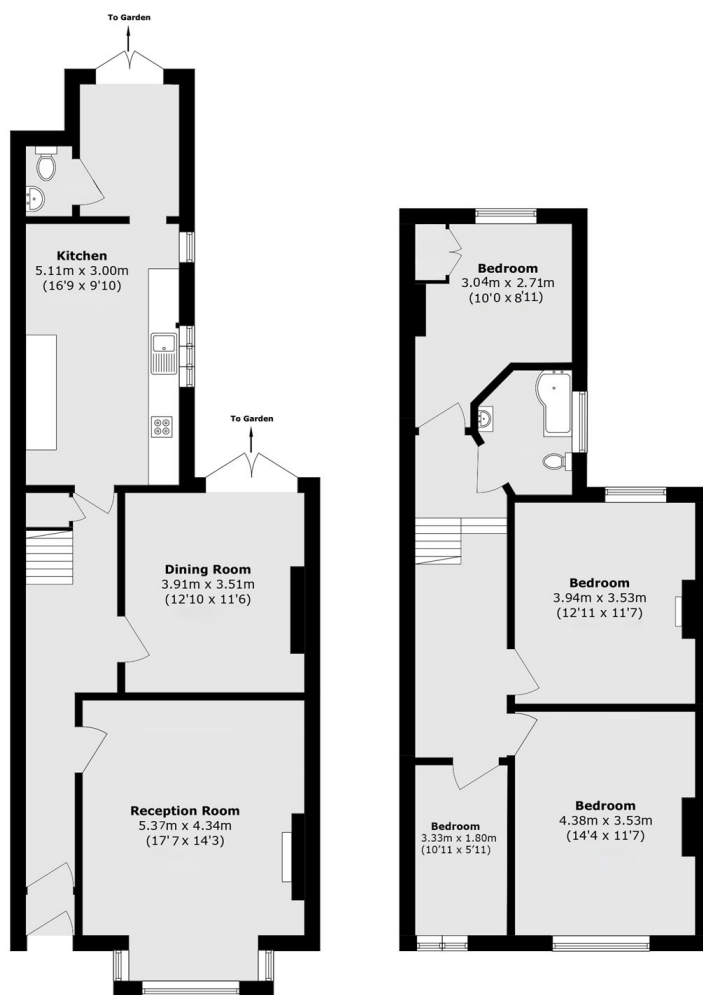
An extremely spacious four bedroom family home with a secluded rear garden. The property has two reception rooms, as well as an eat in kitchen which leads out to the garden. There are four bedrooms and a family bathroom upstairs.

Lower Richmond Road is convenient with easy access to both Sheen and Richmond, both with an array of shops, restaurants and cafes. Also moments from Mortlake Station.

Features

- Four Bedrooms
- Large Garden
- Cellar Storage
- Two Receptions
- Downstairs WC
- Eat In Kitchen

Lower Richmond Road, London, SW14



Ground Floor

First Floor

Total area (approx.): 135.0 sq. m (1453.1 sq. ft)