



Luscombe Maye  
Since 1873



## 12 Greenbanks Close, Slapton

£295,000

3 1 1





Located in the sought-after village of Slapton, this beautifully presented three-bedroom semi-detached home is the perfect choice for a family seeking comfort, style, and a touch of rural tranquillity.

The property welcomes you with a practical porch entrance leading into a spacious open-plan kitchen/diner, thoughtfully designed with a modern aesthetic. The kitchen features integrated appliances, solid wood worktops, and ample space for both cooking and family dining. A door from the hallway leads to a bright and airy reception room, which in turn opens via double-glazed doors to a versatile conservatory—ideal as a playroom, home office or additional lounge area.

Upstairs, the home offers two generous double bedrooms and a single bedroom, all served by a contemporary family bathroom complete with a bath and overhead shower.

One of the standout features of this home is the breathtaking view across the rolling Devon countryside—visible from the elevated rear garden, which is arranged over two levels and includes a practical storage shed on the lower terrace.

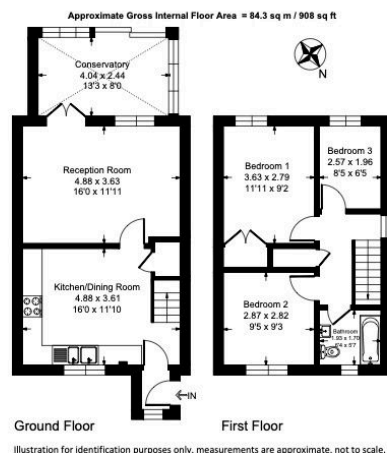
With two allocated parking spaces directly outside the property, and a peaceful location in the beautiful picturesque village of Slapton and its nearby coast, this home combines modern living with rural charm. This property is in the catchment area for both Stokenham Primary School and Kingsbridge Community College, alongside school transport from the end of the road.

Slapton is charming and picturesque, the village has a post office/general store, two public houses, a village hall, nature reserve and the Church of St James. The beautiful village is a short walk from the breath-taking three mile stretch of shingle beach at Slapton Sands and further cafes and amenities at Torcross.

This property is subject to a Devon Restriction - any buyer must have lived and/or worked in Devon for the previous 3 years, or a cumulative total of seven years out of the past 20 years. Please ask the agent for further details.



12 Greenbanks Close, Slapton, TQ7 2PZ

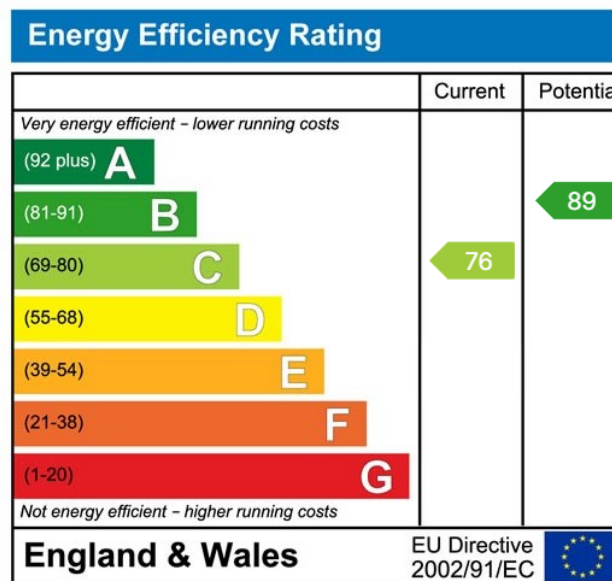


- Charming Semi-Detached Home
- Three-Bedrooms
- Stunning Countryside Views
- Immaculately presented throughout
- Modern, spacious living area
- Versatile Conservatory
- Close to local amenities
- Close to local beaches and Slapton Ley
- Parking outside property

 **Luscombe Maye**  
Since 1873



Use the QR code for further "Material Information" about this home



 **Luscombe Maye**  
Since 1873

**Kingsbridge:**  
62 Fore Street, Kingsbridge TQ7 1PP  
01548 857474  
kingsbridge@luscombemaye.com  
[www.luscombemaye.com](http://www.luscombemaye.com)