



SAMUEL WOOD

Flat D, 105 Corve Street, Ludlow, SY8 1DJ

£700 Per Month



Flat D, 105 Corve Street

Ludlow, SY8 1DJ



MANAGED BY SAMUEL WOOD First floor two double bedroom apartment at the bottom of Corve Street, a short walk from Ludlow's historic town centre.

A well-proportioned two bedroom first floor apartment situated at the bottom of Corve Street, within a short walk of Ludlow's historic town centre. The accommodation benefits from gas fired heating and is arranged around an entrance hall, leading through to a spacious living room with kitchen area. The kitchen provides a practical fitted workspace with integrated hob, oven, sink and storage, while the living area offers space for seating and dining.

There are two double bedrooms, both offering good usable proportions, along with a bathroom fitted with a bath and shower over, WC and wash hand basin. The property forms part of an established character building with a traditional brick frontage, making it a convenient, low-maintenance home close to the centre of town.

The apartment is well placed for Ludlow's range of independent shops, cafés, restaurants and local services. Ludlow is also known for its historic architecture, castle, market and surrounding Shropshire countryside, with the location providing easy access to town amenities on foot.







Directions

Unfurnished.
No smoking/vaping.
Pets considered
EPC - C
Council Tax Band – A
Utilities (mains gas, mains electric, mains water, mains drainage)

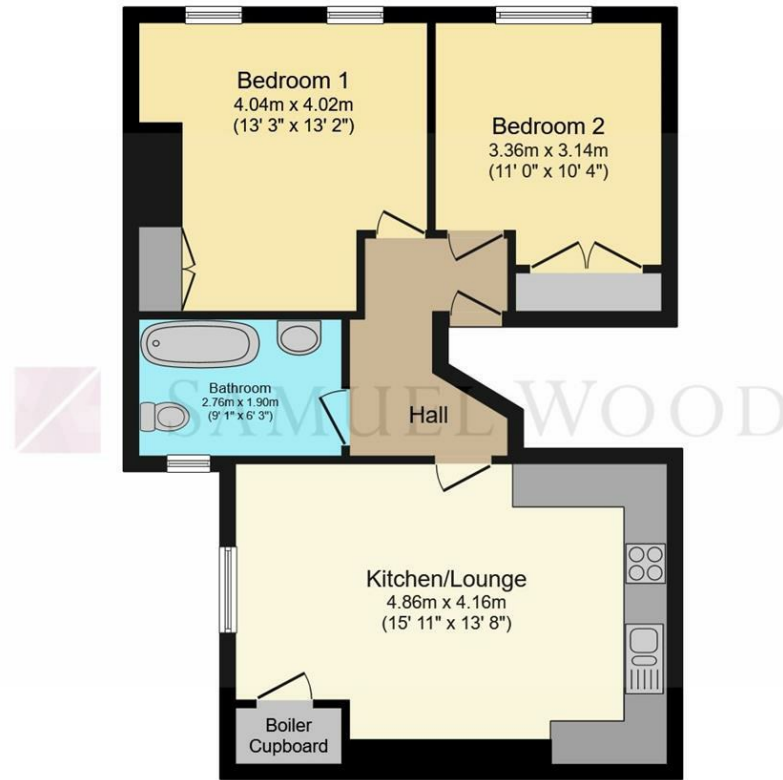
Parking – on street parking (please note Ludlow operates residents permit scheme. You can find more details on Shropshire Council website)

IMPORTANT INFORMATION FOR APPLICANTS WHO ARE CURRENTLY RENTING:

If you are renting another property, please check your notice requirements before booking a viewing or submitting an application. From 1 May 2026, tenants ending an assured periodic tenancy in England usually need to give 2 months' written notice, and the tenancy must normally end on the day rent is due or the day before. This means your actual move date may be later than you expect. Please do not assume that your current landlord will agree to a shorter notice period or an earlier release unless this has been confirmed. We may ask you to confirm your current tenancy notice position before progressing an application.







Floor Plan

Total floor area: 63.2 sq.m. (680 sq.ft.)

This floor plan is for illustrative purposes only. It is not drawn to scale. Any measurements, floor areas (including any total floor area), openings and orientations are approximate. No details are guaranteed, they cannot be relied upon for any purpose and do not form any part of any agreement. No liability is taken for any error, omission or misstatement. A party must rely upon its own inspection(s). Powered by www.Propertybox.io

We take every care in preparing our sales details. They are checked and usually verified by the Vendor. We do not guarantee appliances, alarms, electrical fittings, plumbing, showers etc. You must satisfy yourself that they operate correctly. Room sizes are approximate; they are usually taken in metric and converted to imperial. Do not use them to buy carpets or furniture. We cannot verify the tenure, as we do not have access to the legal title; we cannot guarantee boundaries or rights of way so you must take the advice of your legal representative. No person in the employment of or representing Samuel Wood has any authority to make any representation or warranty whatever in relation to this property. If there is any point which is of particular importance to you, please contact the office and we will be pleased to check the information. Do so particularly if contemplating travelling some distance to view. Applicants are advised that the majority of our shots are taken with a wide angle lens.

CONTEMPORARY AGENCY • TRADITIONAL VALUES

2 Shoplatch, Shrewsbury, Shropshire, SY1 1HF

Tel: 01743 272710 | shrewsbury@samuelwood.co.uk