

Heath Passage, NW3

£595,000

Tucked away in a secluded setting, this unique one bedroom freehold house offers character, privacy, and impressive high ceilings throughout. Presented in good condition, it provides a rare opportunity to acquire a truly individual home.

Heath Passage is a hidden gem situated behind Golders Hill Park, offering a peaceful setting moments from the open spaces of Hampstead Heath. Hampstead Village is within easy reach, with its independent cafés, boutiques, and restaurants. Transport links include Golders Green underground station (Northern line) and Hampstead underground station (Northern line).

Features

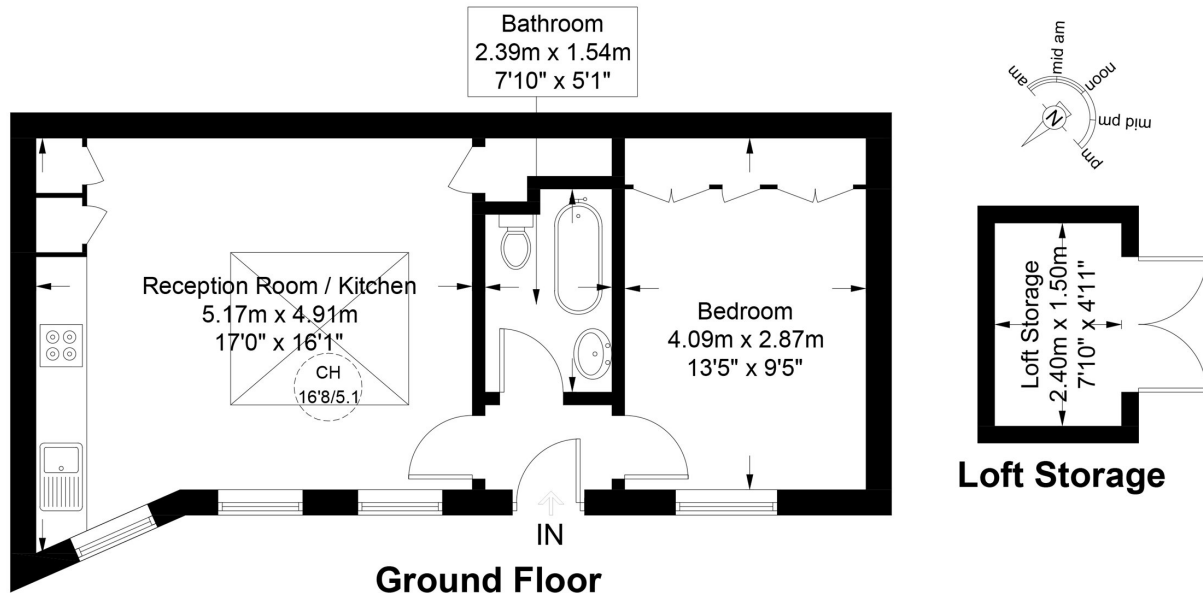
- One Bedroom
- Freehold
- Private Location
- Northern Line
- Golders Hill Park
- Loft Storage

Heath Passage, London, NW3

Heath Passage, NW3

Approximate Gross Internal Area = 484 sq ft / 45.0 sq m
(Including Loft Storage)

Loft Storage = 39 sq ft / 3.6 sq m



This plan is for layout guidance only and is not drawn to scale unless stated. All dimensions, including windows, doors, and the Total Gross Internal Area (GIA), are approximate. For precise measurements, please consult a qualified architect or surveyor before making any decisions based on this plan.

