



Wellesley Crescent, TW2

£1,095,000

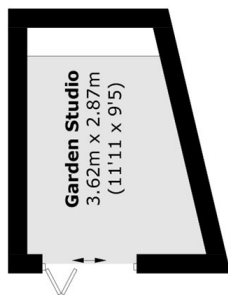
This semi-detached property offers the ideal family home, featuring a spacious through reception room and an extended kitchen created from the converted garage, with direct access to the South-West facing garden. Upstairs comprises three double bedrooms, a family bathroom, and an additional separate W/C. The property also benefits from a generous driveway and potential to extend STPP.

Wellesley Crescent overlooks and is adjacent to a large shared green where many families' children have grown up playing. The property is also within half a mile of Twickenham Green and Strawberry Hill Station, as well as Waldegrave, Trafalgar and Archdeacon schools putting this at the top of the list for most buyers.

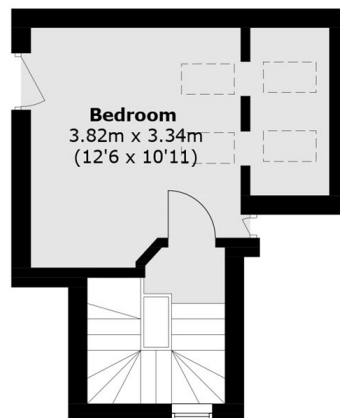
Features

- Potential To Extend STPP
- Three Bedrooms
- Off Street Parking
- Fantastic Location
- Great School Catchments
- South West Facing Garden

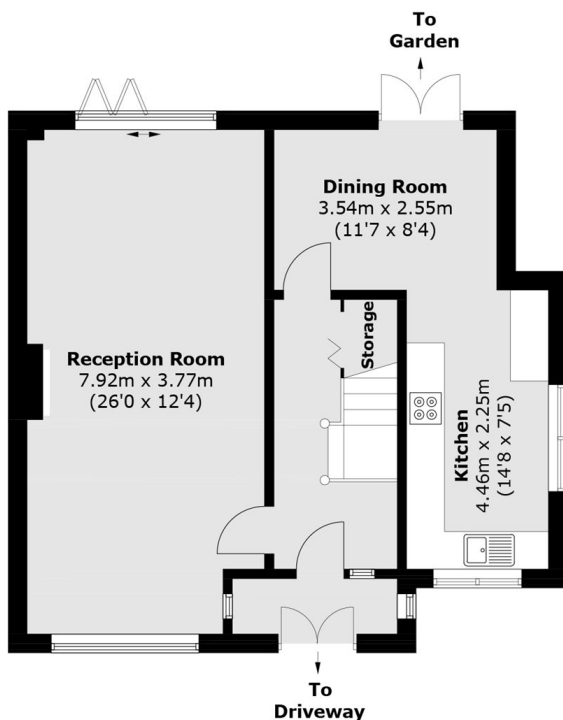
Wellesley Crescent, Twickenham, TW2



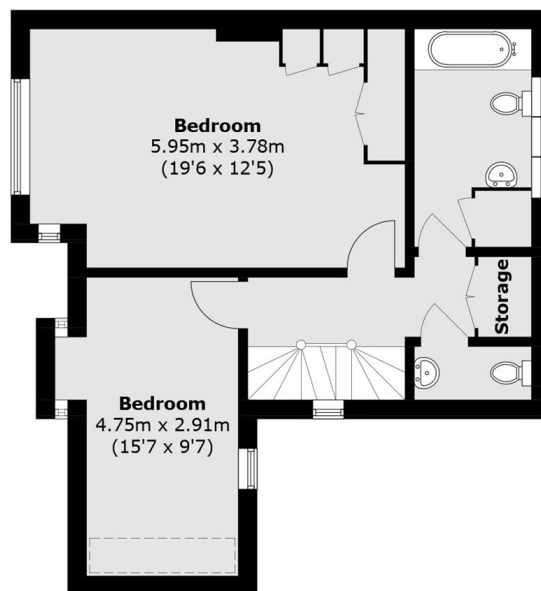
(Not Shown In Actual
Location / Orientation)



Second Floor



Ground Floor



First Floor

Total area (approx.): 135.2 sq. m (1,455.3 sq. ft)
Garden Studio : 8.9 sq. m (95.8 sq. ft)