

Esplanade, Scarborough, YO11 2UZ

- Prime Esplanade location with stunning sea and clock tower views
- Generous lounge/diner with feature bay window
- Two double bedrooms including master with south-facing bay
- No Onward Chain
- Spacious first floor apartment with lift access
- Modern kitchen with balcony enjoying coastal outlook
- Garage included

£280,000



Esplanade, Scarborough, YO11 2UZ

DESCRIPTION

Hunters are delighted to present this stunning spacious first floor apartment set within a highly sought-after position on the iconic Esplanade offering breath taking sea views and looking out towards the clock tower.

This beautifully presented apartment boasts a well-appointed and generous layout throughout, perfect for both full-time living or a coastal retreat. The standout lounge/diner features a charming bay window which perfectly frames the stunning sea views, creating a bright and inviting space to relax or entertain. The modern, recently fitted kitchen is both stylish and practical, with direct access onto a private balcony where you can further enjoy the coastal outlook. There are two well-proportioned double bedrooms, including a superb master bedroom with a feature south-facing bay window, flooding the room with natural light. A contemporary house bathroom completes the accommodation.

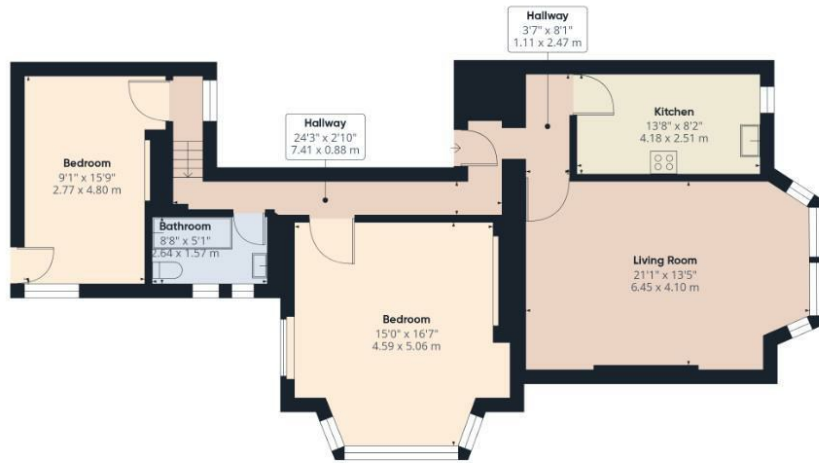
The property is offered in excellent decorative order throughout, allowing a purchaser to move straight in and enjoy from day one. Further benefits include lift access within the building for ease and convenience. Externally, the property also benefits from a GARAGE, providing valuable storage or secure parking, a rare addition for such a prime Esplanade location.

Situated in one of Scarborough's most desirable areas, the apartment is perfectly placed for access to the Italian Gardens, Spa Bridge and the South Bay, as well as a range of local amenities and transport links.

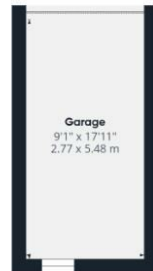
Offered to the market with NO ONWARD CHAIN, this is a fantastic opportunity to acquire a beautifully positioned coastal home. Early viewing is highly recommended.







Floor 1 Building 1



Ground Floor Building 2



Approximate total area⁽¹⁾
 1123 ft²
 104.3 m²

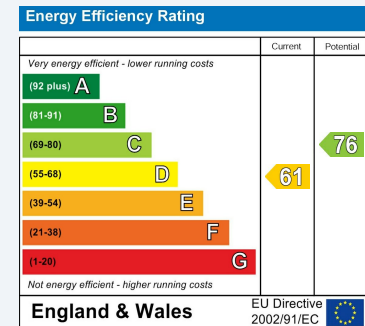
(1) Excluding balconies and terraces

Calculations reference the RICS IPMS 3C standard. Measurements are approximate and not to scale. This floor plan is intended for illustration only.

GIRAFFE360

ENERGY PERFORMANCE CERTIFICATE

The energy efficiency rating is a measure of the overall efficacy of a home. The higher the rating the more energy efficient the home is and the lower the fuel bills will be.



These particulars are intended to give a fair and reliable description of the property but no responsibility for any inaccuracy or error can be accepted and do not constitute an offer or contract. We have not tested any services or appliances (including central heating if fitted) referred to in these particulars and the purchasers are advised to satisfy themselves as to the working order and condition. If a property is unoccupied at any time there may be reconnection charges for any switched off/disconnected or drained services or appliances - All measurements are approximate.

THINKING OF SELLING? If you are thinking of selling your home or just curious to discover the value of your property, Hunters would be pleased to provide free, no obligation sales and marketing advice. Even if your home is outside the area covered by our local offices we can arrange a Market Appraisal through our national network of Hunters estate agents.

Viewings

Please contact scarborough@hunters.com, if you wish to arrange a viewing appointment for this property or require further information.

Valuations

For a valuation of your property, please email the team with your property details, contact information and the times you are available.



33 Huntriss Row, Scarborough, YO11 2ED
 Tel: 01723 336760 Email: scarborough@hunters.com <https://www.hunters.com>

