



11 Ennerdale Close, Dronfield Woodhouse, Dronfield S18 8PL



Lettings

11 Ennerdale Close

Dronfield Woodhouse

Per Calendar Month

£875 Per Calendar

Enviably positioned near the head of a quiet cul-de-sac, this beautifully presented two bedroom semi detached home.

The welcoming porch opens into a generously sized living room, which leads through to a spacious dining kitchen. Upstairs, you will find a large primary double bedroom, a well proportioned second double bedroom, and an excellently appointed bathroom. The home is as practical as it is inviting, benefiting from uPVC double glazing throughout and reliable gas central heating.

Outside, a private driveway provides ample off road parking for several vehicles, while the rear reveals a delightful, well maintained garden complete with a relaxing patio area, a neat lawn, and beautifully stocked planting beds.

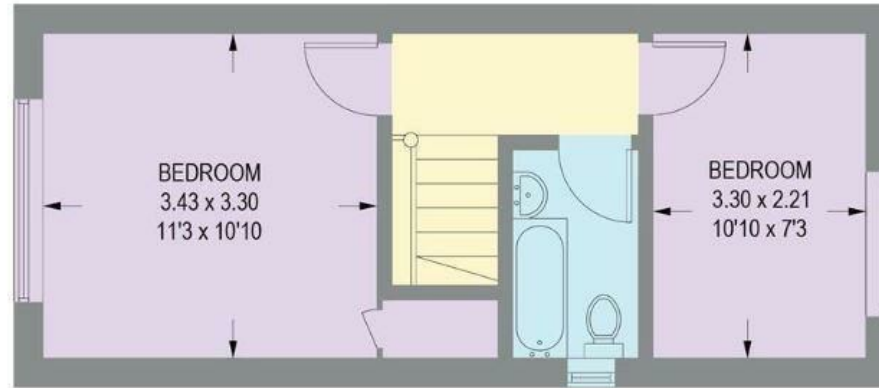
UNFURNISHED Restrictions - No smokers or pets. Energy Efficiency Rating D Council Tax Band B



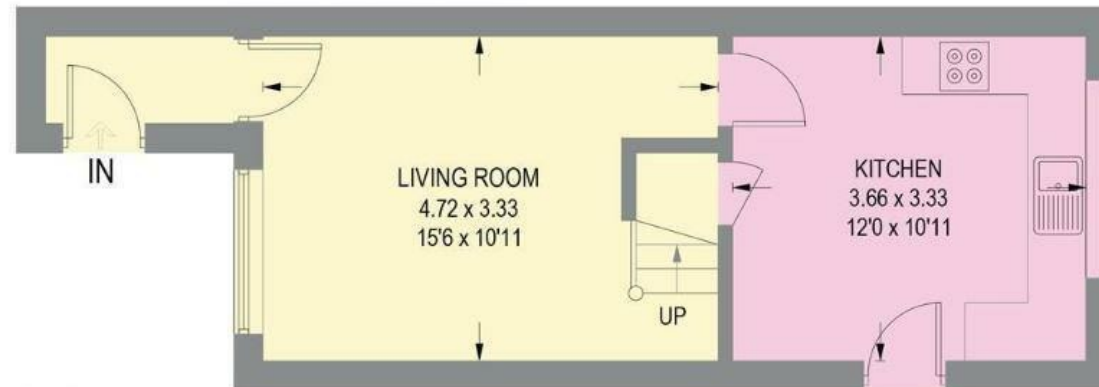


11 ENNERDALE CLOSE

APPROXIMATE GROSS INTERNAL AREA = 59.2 SQ M / 637 SQ FT



FIRST FLOOR
28.5 SQ M / 307 SQ FT



GROUND FLOOR
30.7 SQ M / 330 SQ FT

Illustration for identification purposes only, measurements are approximate, not to scale.

While we endeavour to make our sales particulars fair, accurate and reliable, they are only a general guide to the property and, accordingly, if there is any point, which is of particular importance to you, please contact the relevant office. The Agents have not tested any apparatus, equipment, fittings or services and so cannot verify they are in working order. The buyer is advised to obtain verification. Please note all the measurement details are approximate and should not be relied upon as exact. All plans, floor plans and maps are for guidance purposes only and are not to scale. Under no circumstances should they be relied upon as exact or for use in planning carpets and other such fixtures, fittings or furnishings. YOUR HOME IS AT RISK IF YOU DO NOT KEEP UP REPAYMENTS ON A MORTGAGE OR OTHER LOAN SECURED ON IT. 'A Life Assurance policy may be requested.' 'Written Quotations of credit terms available on request.'

Banner Cross
T: 0114 268 3241
E: bannercross@saxtonmee.co.uk
www.saxtonmee.co.uk

Hathersage
T: 01433 650009
E: hathersage@saxtonmee.co.uk

Bakewell
T: 01629 815307
E: bakewell@saxtonmee.co.uk

Matlock
T: 01629 828250
E: matlock@saxtonmee.co.uk



Lettings