



Shirland Road, W9

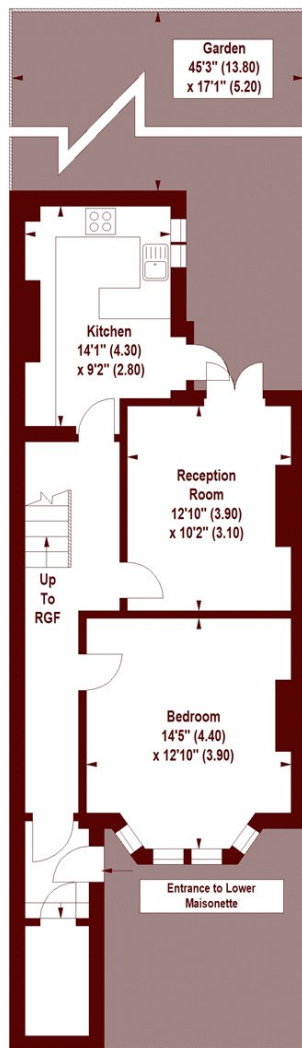
£1,450,000

4 3 3 D

• Freehold

• Two flats

• Large garden



LOWER GROUND FLOOR

Shirland Road, W9

APPROX. GROSS INTERNAL FLOOR AREA 1792 SQFT / 166.48 SQM

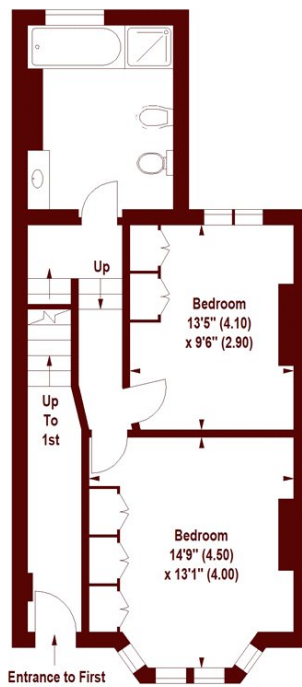
Lower Maisonette

1160 SQFT / 107.77 SQM

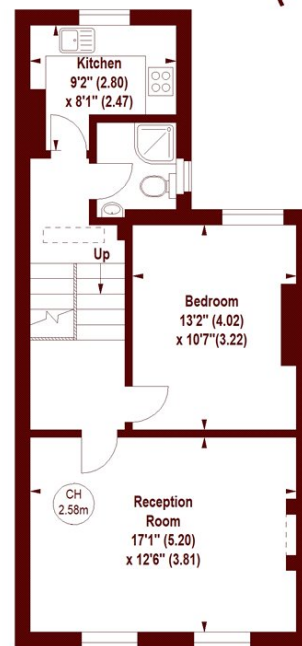
First Floor Flat

632 SQFT / 58.71 SQM

Key :
CH - Ceiling Height



RAISED GROUND FLOOR



FIRST FLOOR

The floor plan is not to scale and measurements and areas shown are approximate and therefore should be used for illustrative purposes only. The plan has been prepared in accordance with the RICS code of Measuring Practice and whilst we have confidence in the information produced, it must not be relied on. If there is any aspect of particular importance, you should carry out or commission your own inspection of the property.
Copyright of FeaturePRO.

Marsh & Parsons Little Venice

35 Maida Vale, Maida Vale,
W9 1TP
020 7993 3050