



Emba Street, SE16

£900,000

Situated moments from the river, this three bedroom freehold house is in stunning condition throughout and boasts a large double reception room, extended dining room, modern kitchen, downstairs WC, South Facing Garden and ample storage.

Emba Street is only 0.2 miles from Bermondsey Station and 0.4 miles from Rotherhithe station offering excellent transport links to anywhere in London.

Features

- Three Bedroom
- Freehold House
- South Facing Garden
- Immaculate Condition
- Excellent Location
- Permit Parking Available



Emba Street, SE16

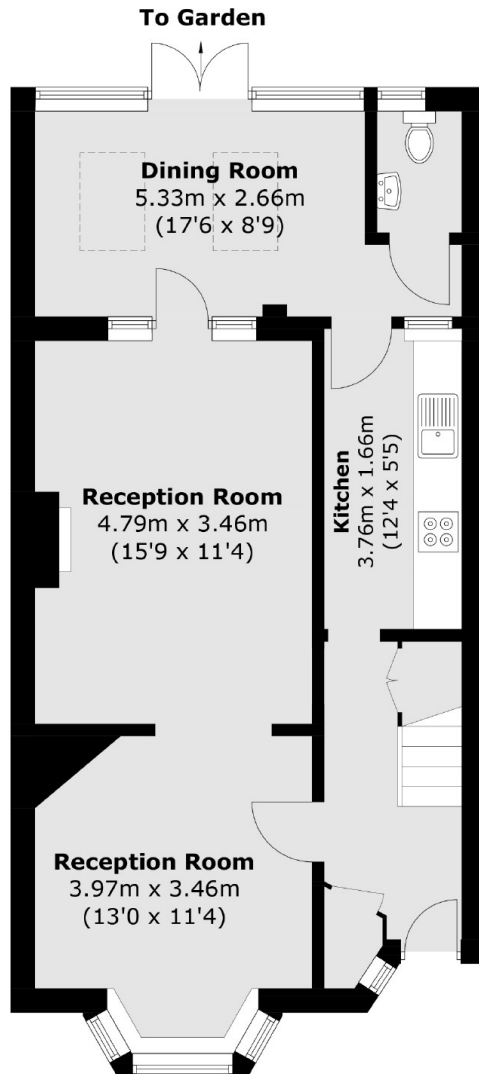
Located on this quiet leafy street, the house is beautifully decorated throughout. The house has large new windows in every room and is flooded with natural light.

In addition the house offers three bedrooms along with a modern bathroom and an additional downstairs WC. The South Facing Garden has been recently landscaped with an array of beautiful trees.

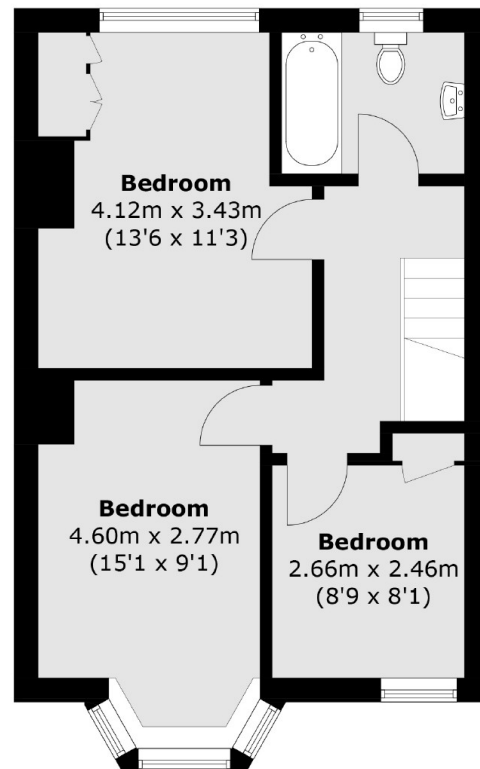
The house is in close proximity to the shops, deli's and restaurants of Shad Thames. Maltby Street Market and Bermondsey Street are also located moments away.



Emba Street, London, SE16



Ground Floor



First Floor

Total area (approx.): 103.8 sq. m (1,117.3 sq. ft)