



28 Mayfield Close, Hersham

Walton-On-Thames

£675,000



28 Mayfield Close

Hersham, Walton-On-Thames

Renovated 3-bed mid-terrace with luxury finishes, high-end kitchen, spacious rooms, south facing landscape garden and commuter links to London. OPEN HOUSE FRIDAY 22MAY 1-2PM
Council Tax band: E

Tenure: Freehold

EPC Energy Efficiency Rating: D

EPC Environmental Impact Rating: D

- Beautifully renovated by owner
- Backlit Marble TV Surround
- AEG Appliances
- Quartz Kitchen worktops
- Bespoke Cabinetry
- New shutters on windows
- South Facing Landscaped Garden
- Short walk to train station
- 30 minutes into 3 major London Stations
- Commuters Dream Location



Living Room

Kitchen

Garden





Main Bedroom

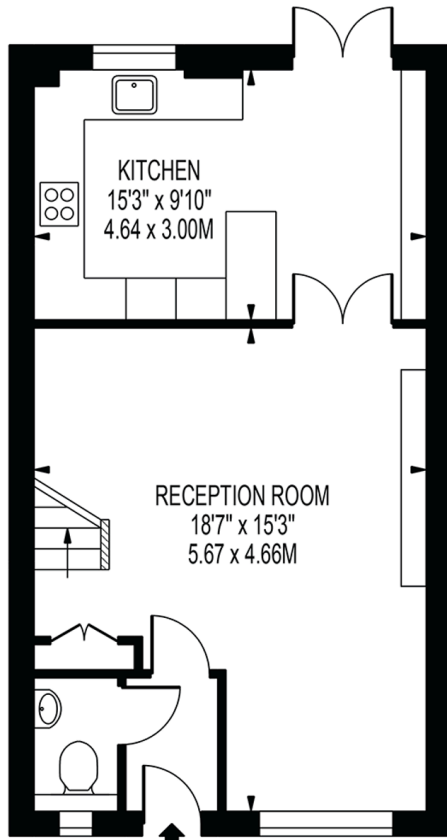
2nd Bedroom

Bathroom

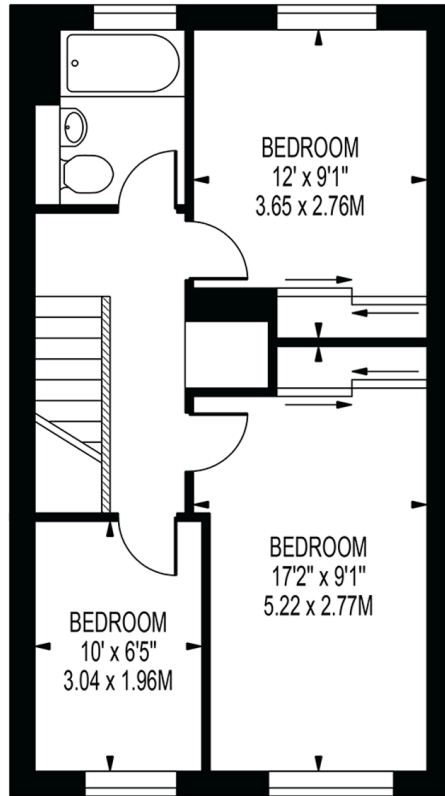


MAYFIELD CLOSE

APPROXIMATE GROSS INTERNAL FLOOR AREA: 897 SQ FT - 83.33 SQ M



GROUND FLOOR



FIRST FLOOR

FOR ILLUSTRATION PURPOSES ONLY

THIS FLOOR PLAN SHOULD BE USED AS A GENERAL OUTLINE FOR GUIDANCE ONLY AND DOES NOT CONSTITUTE IN WHOLE OR IN PART AN OFFER OR CONTRACT.
ANY INTENDING PURCHASER OR LESSEE SHOULD SATISFY THEMSELVES BY INSPECTION, SEARCHES, ENQUIRIES AND FULL SURVEY AS TO THE CORRECTNESS OF EACH STATEMENT.
ANY AREAS, MEASUREMENTS OR DISTANCES QUOTED ARE APPROXIMATE AND SHOULD NOT BE USED TO VALUE A PROPERTY OR BE THE BASIS OF ANY SALE OR LET.



Willmotts Real Estate Agents

Willmotts Property Services, Willmott House - W6 9EU

02082229958

info@willmotts.com

www.wreg.co.uk

These particulars are prepared for the convenience of prospective purchasers and do not form part of any offer or contract. All descriptions, dimensions, references to condition and other details are provided in good faith but are for guidance only and should not be relied upon as statements of fact. Measurements are approximate and subject to variations; purchasers are advised to verify dimensions and specifications. No warranty is given or implied regarding the accuracy of the information contained herein. Properties may be subject to prior sale, lease, or withdrawal without notice. The estate agent accepts no responsibility for any loss or damage arising from reliance on these particulars.



WILLMOTT'S
Est. 1856