



## Hallam Street, W1W

£2,250 Per calendar month

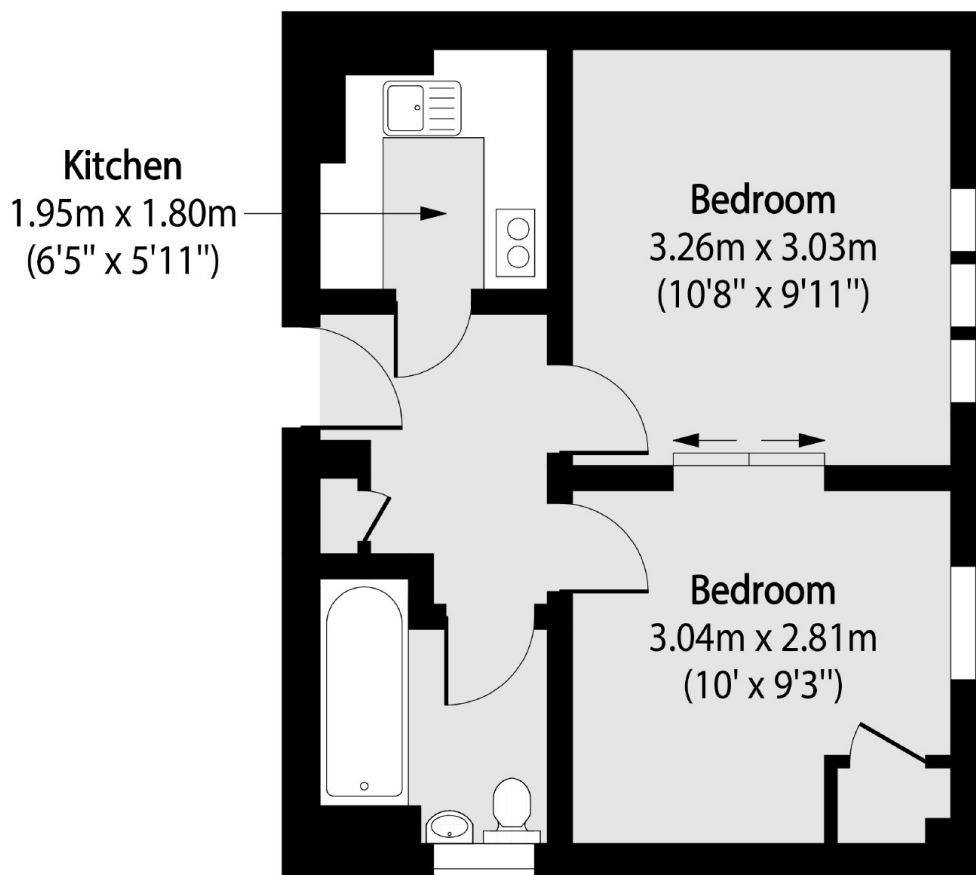
This well positioned one bedroom apartment is situated in the prime Marylebone. The property has been newly repainted and features wooden flooring throughout, ample storage, and an on-site porter. \*\*\*\* HEATING & HOT WATER INCLUDED IN THE RENT\*\*\*\*

Hallam Court is conveniently situated near Great Portland Street which provides links to the Circle, Metropolitan, and Hammersmith & City lines. This prime location also is a stones throw away from Oxford Street and the West End, providing an abundance of choice for restaurants, shopping and entertainment.

### Features

- One Bedroom Apartment
- Well Presented
- Wooden Floors
- Great Storage
- High Ceilings
- Porter

# Hallam Street, London, W1W



Total area (approx): 30.90 sq m (333 sq. ft)