

**Westfield Road  
Caversham, Reading, Berkshire RG4 8HJ**

**£825 Per Month**

NEA LETTINGS: A modern double room is available in this house share in the popular area of Caversham, offering easy access to Reading town centre. The room is fully furnished and includes a double ottoman bed with additional storage, a high-quality sprung mattress, desk and chair, wardrobe, bedside table, chest of drawers, and a 32-inch Smart TV. The room also benefits from both Wi-Fi and ethernet connections. The property is a professional house share with six rooms in total. Communal areas include a fully equipped kitchen and a shared garden. EPC Rating E. Single professionals only

DISCLAIMER: These particulars are a general guide only, they do not form part of any contract. Video content and other marketing material shown are believed to be an accurate and fair representation of the property at the time the particulars were created. Please ensure you have made all investigations, and you are satisfied that all your property requirements have been met if you make an offer without a physical viewing.

# Westfield Road, Reading, Berkshire RG4 8HJ

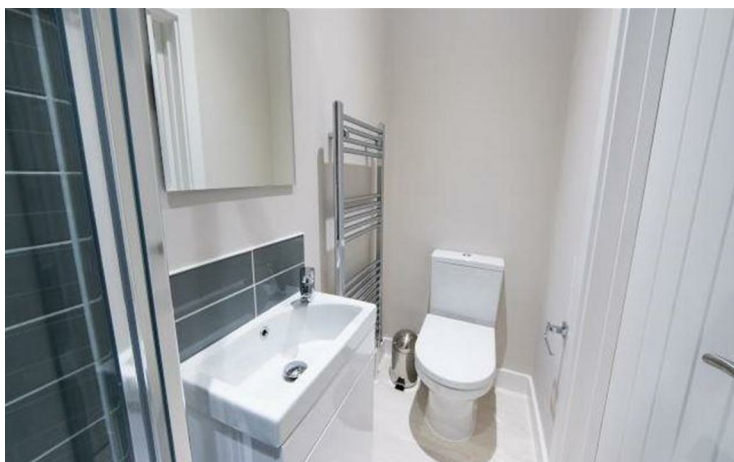
- NEA Lettings
- Room in shared house - Single professionals only
- Furnished
- Communal garden
- EPC Rating E
- Reading
- Ensuite
- Communal kitchen - washing machine
- Bills included in monthly rental
- Available 15th September 2026

## Bedroom



Positioned in the ground floor at the front of the property, this bedroom benefits from direct access to the garden. The room is furnished with a double ottoman bed for additional storage, bedside cabinets, a desk and chair, and a 32-inch TV.

## En Suite



The modern en-suite bathroom includes a vanity unit for storage, heated tower rail and vanity mirror.

## Kitchen



The spacious kitchen is fully equipped with an electric hob and oven with extractor, along with an integrated fridge freezer, dishwasher, and laundry facilities.

## Dining Room



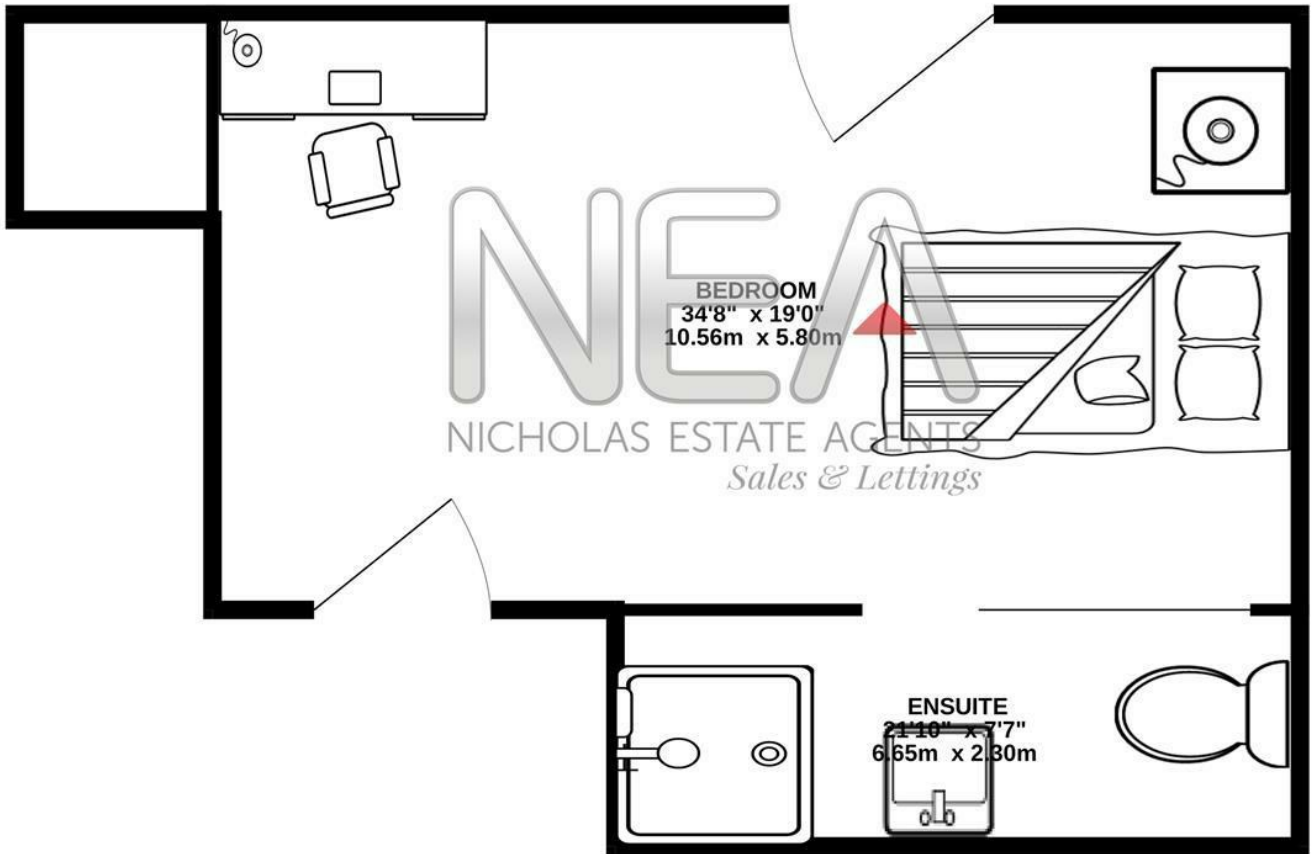
The property also benefits from a modern communal living and dining area, furnished with two sofas, a dining table and chairs, and a TV.

## Garden



The communal garden is spacious and finished with pebbles, and includes outdoor furniture for tenants to enjoy.

# BASEMENT



Whilst every attempt has been made to ensure the accuracy of the floorplan contained here, measurements of doors, windows, rooms and any other items are approximate and no responsibility is taken for any error, omission or mis-statement. This plan is for illustrative purposes only and should be used as such by any prospective purchaser. The services, systems and appliances shown have not been tested and no guarantee as to their operability or efficiency can be given.  
Made with Metropix ©2026

Energy Efficiency Rating	
Current	Potential
Very energy efficient - lower running costs	
(92 plus) <b>A</b>	<b>79</b>
(81-91) <b>B</b>	
(69-80) <b>C</b>	
(55-68) <b>D</b>	
(39-54) <b>E</b>	
(21-38) <b>F</b>	
(1-20) <b>G</b>	
Not energy efficient - higher running costs	
<b>England &amp; Wales</b> EU Directive 2002/91/EC	
Environmental Impact (CO <sub>2</sub> ) Rating	
Current	Potential
Very environmentally friendly - lower CO <sub>2</sub> emissions	
(92 plus) <b>A</b>	<b>52</b>
(81-91) <b>B</b>	
(69-80) <b>C</b>	
(55-68) <b>D</b>	
(39-54) <b>E</b>	
(21-38) <b>F</b>	
(1-20) <b>G</b>	
Not environmentally friendly - higher CO <sub>2</sub> emissions	
<b>England &amp; Wales</b> EU Directive 2002/91/EC	

