



1 Coltness Road

Elburton, Plymouth, PL9 8HA

Price Guide £500,000



A rare opportunity to acquire this 1930s detached family home set in large gardens with far-reaching views. Many character features and accommodation comprising conservatory, entrance hall, sitting room, dining room, study with annexe potential, kitchen/breakfast room, downstairs cloakroom/wc, 4 bedrooms, bathroom & separate wc. Long garage. Double-glazing & gas central heating. No onward chain.



COLTNESS ROAD, ELBURTON, PLYMOUTH PL9 8HA Accommodation (Accommodation)

Front door opens into the conservatory.

CONSERVATORY 13'10" x 7'4" (4.22 x 2.24)

Quarry-tiled floor. Double-glazed windows to the front elevation. Pitched glazed roof. Original door, with stained leaded glass, opening to the entrance hall. A separate door opens into the study.

ENTRANCE HALL 10'8" x 7'5" (3.25 x 2.26)

Provides access to the accommodation. Coved ceiling. Picture rail. Staircase with a cupboard beneath ascends to the first floor. Original doors provide access to the accommodation.

SITTING ROOM 16'2" x 13'11" (4.93 x 4.24)

Dual aspect room with original timber single-glazed window to the front elevation with leaded stained glass looking into the conservatory. To the rear there are sliding uPVC double-glazed patio doors which overlook the garden and provide far-reaching views beyond. Fireplace with a polished marble inset and hearth, mahogany surround and fitted gas fire. Coved ceiling.

DINING ROOM 14'10" x 13'11" (4.52 x 4.24)

A spacious formal dining room with a double-glazed window to the front and side elevations. Coved ceiling. Serving hatch through to the kitchen/breakfast room.

KITCHEN/BREAKFAST ROOM 25'2" x 11'11" (7.67 x 3.63)

A spacious open plan room with 2 uPVC double-glazed windows to the rear overlooking the garden. Ample space for breakfast table and chairs. The kitchen is fitted with a range of matching base and wall-mounted cabinets with solid oak fascias, work surfaces and tiled splash-backs. Built-in Neff dual oven and grill. Separate inset hob, microwave and stainless-steel one-&a-half bowl single-drainer sink unit. Space and plumbing for dishwasher. Space for free-standing fridge/freezer. Tiled floor. Obscured double-glazed door providing integral access to the garage. Double doors opening into a utility cupboard which has space and plumbing for a washing machine and space for a further free-standing appliance. Shelf. Matching tiled floor.

STUDY 19'0" x 9'5" (5.79 x 2.87)

A spacious dual aspect reception room with potential to be used as an annexe. 2 uPVC double-glazed windows and fitted vertical blinds. Vaulted ceiling with inset spotlighting. Doorway opens into a utility area.

UTILITY AREA 9'9" x 5'4" (2.97 x 1.63)

Stainless-steel single-drainer sink unit with storage cupboard beneath. Loft hatch. Double-glazed window overlooking the garden and beyond. A doorway opens into the wc which has a white low-level flush system.

CLOAKROOM/WC

Fitted with a wc and matching wall-mounted basin with a tiled splash-back. uPVC obscured double-glazed window to the front elevation.

FIRST FLOOR LANDING 16'1" x 8'6" (4.90 x 2.59)

Provides a spacious approach to the first floor accommodation. Picture rail. Double-glazed windows to 2 elevations.

BEDROOM ONE 16'2" x 12'10" (4.93 x 3.91)

A dual aspect room with a double-glazed window to the front elevation and a uPVC double-glazed window to the rear which provides fabulous views over the surrounding area towards Dartmoor. The room is comprehensively-fitted with a range of built-in furniture including wardrobes, cupboards, dressing table, bedside cabinets and vanity basin with inset lighting above. Fitted fully-tiled shower cubicle with an electric shower system.

BEDROOM TWO 13'6" x 12'5" (4.11 x 3.78)

Double-glazed window to the front elevation. Picture rail. Range of built-in wardrobes and drawer units, dressing table and basin with tiled surround, mirror, light and shaver point.

BEDROOM THREE 10'7" x 8'6" (3.23 x 2.59)

uPVC double-glazed window to the side elevation with fabulous views towards Dartmoor. Large attic hatch with a pull-down ladder.

BEDROOM FOUR 10'8" x 7'8" (3.25 x 2.34)

uPVC double-glazed window to the rear elevation with views. Picture rail.

BATHROOM 10'6" x 5'9" (3.20 x 1.75)

A period suite in green featuring bath with large square basin and matching splash-back. Over the bath is a Mira shower system, shower rail and curtain. Medicine cabinet. Period tiling to the walls. uPVC obscured double-glazed window to the rear elevation.

SEPARATE WC

Featuring a matching low-level flush system. Period tiling. Obscured double-glazed window to the side elevation.

LOFT

The loft is boarded with lighting and provides a useful storage area.

GARAGE 38'0" x 9'4" maximum (11.58 x 2.84 maximum)

A tandem-length double garage with an up-and-over door to the front elevation. uPVC double-glazed windows to either side. Obscured double-glazed door leading to the rear garden. Pitched roof. Power and lighting. Mains water.

CELLAR

A useful sub-floor storage area with lighting.

OUTSIDE

The house is approached by both a driveway and a separate pedestrian entrance with wrought iron gates. The driveway runs along the front elevation and is laid to natural stone paving with a variety of well-stocked shrub beds to the front and side elevations, together with a mature copper beech tree. Outside lighting. A generous pathway leads around the side of house accessing the rear. The rear garden is extensive and has a beautiful view towards Dartmoor. The gardens are laid to lawn, bordered by paving, shrub and flower beds. Good-quality timber shed and a greenhouse. Patio areas and pond. Outside lighting.

COUNCIL TAX

Plymouth City Council
Council tax band F

SERVICES

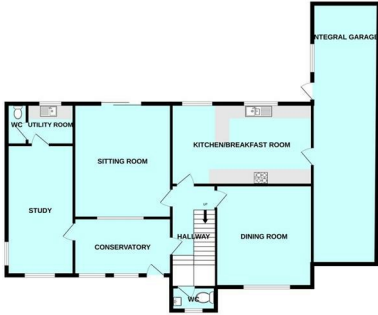
The property is connected to all the mains services: gas, electricity, water and drainage.

Area Map



Floor Plans

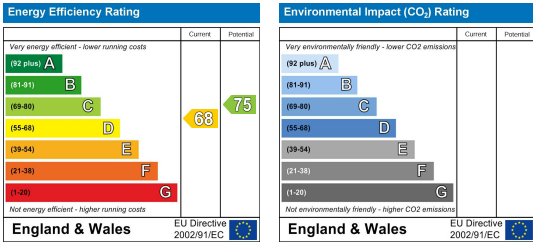
GROUND FLOOR



1ST FLOOR



Energy Efficiency Graph



These particulars, whilst believed to be accurate are set out as a general outline only for guidance and do not constitute any part of an offer or contract. Intending purchasers should not rely on them as statements of representation of fact, but must satisfy themselves by inspection or otherwise as to their accuracy. No person in this firm's employment has the authority to make or give any representation or warranty in respect of the property.