



move
Property Sales & Lettings

Flat 7, Scoriton, 16 Pittville Crescent
£1050 PCM



Flat 7

Scoriton, Cheltenham

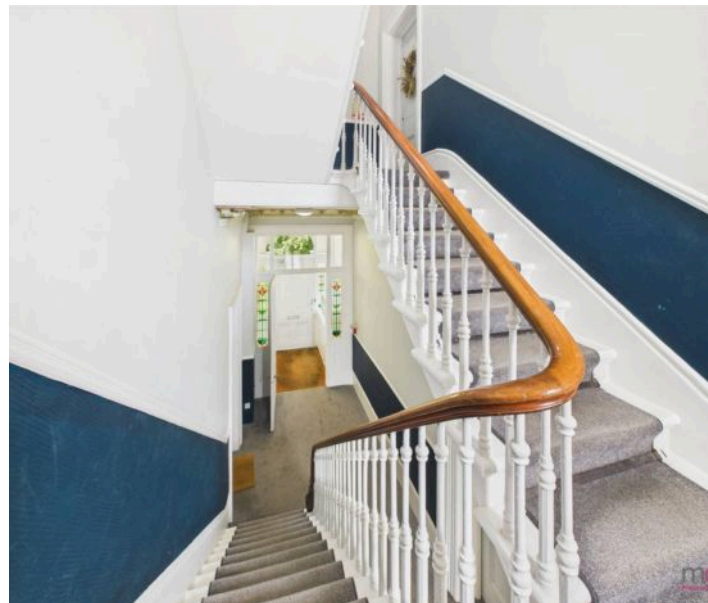
Stunning Duplex Apartment | Pittville Crescent |
Parking & Garage | No Onward Chain
Council Tax band: B

Tenure: Leasehold

EPC Energy Efficiency Rating: E

EPC Environmental Impact Rating: E

- Elegant First Floor Duplex Apartment
- Located on the Prestigious Pittville Crescent
- Retains Beautiful Original Features
- Spacious Accommodation Throughout
- Includes Allocated Parking Space & Garage
- Sought-After Location Near Pittville Park





Floor 0



Floor 1

Approximate total area⁽¹⁾

647 ft²

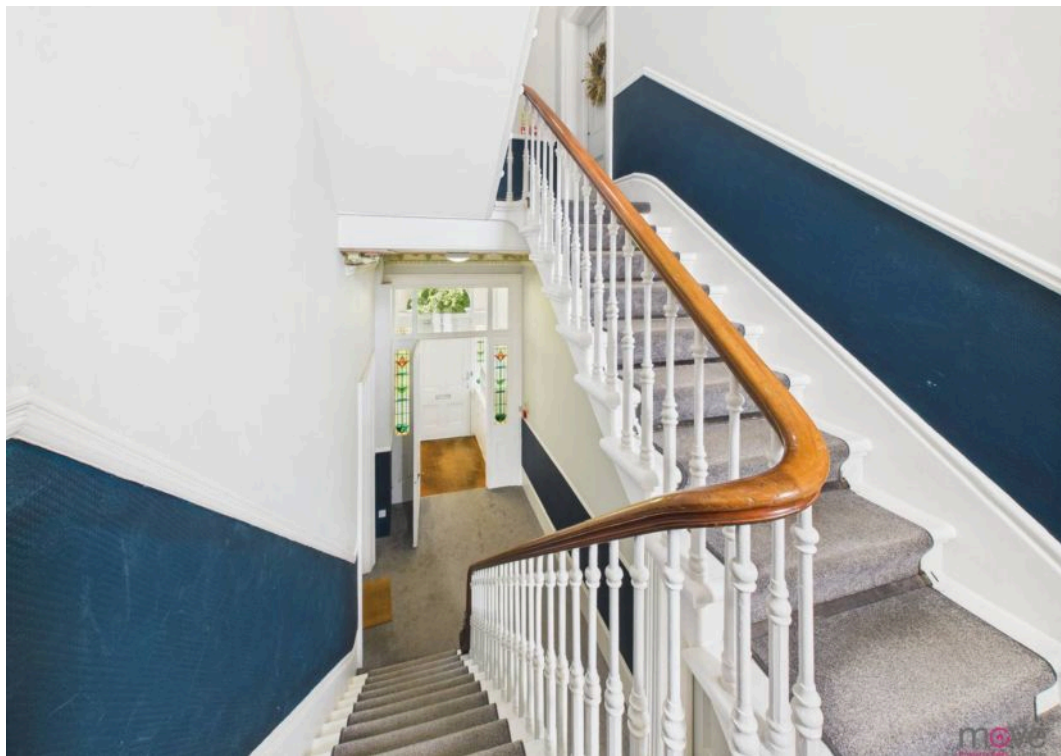
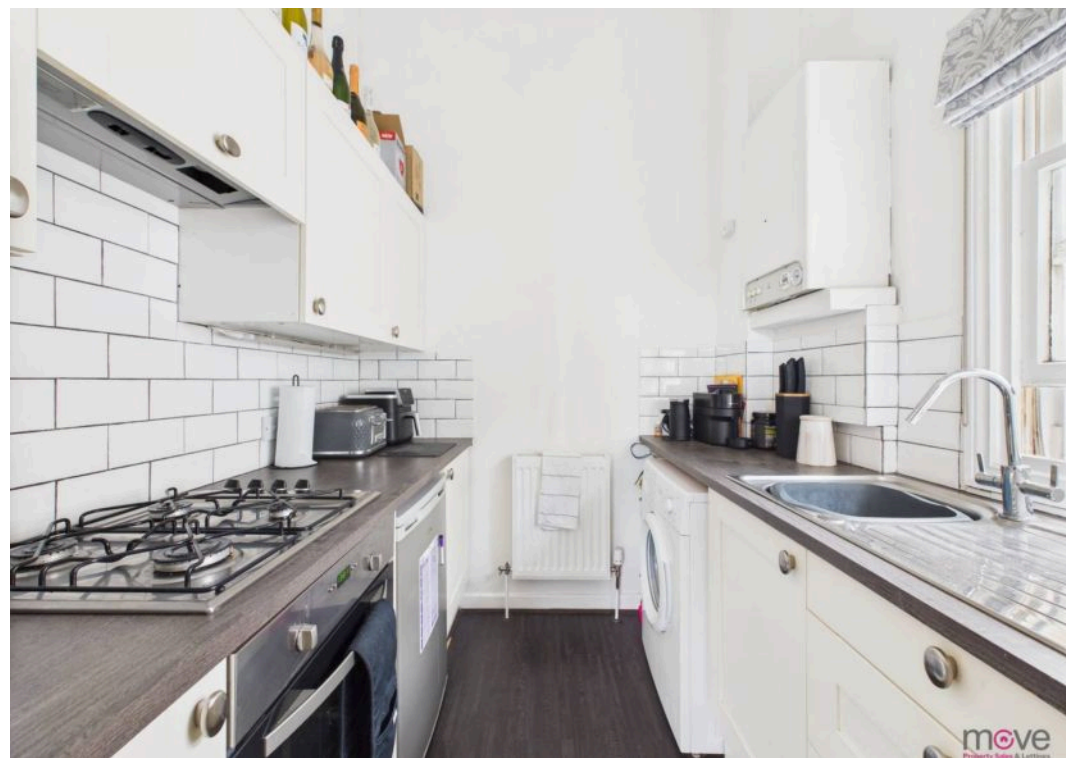
60.2 m²

(1) Excluding balconies and terraces

While every attempt has been made to ensure accuracy, all measurements are approximate, not to scale. This floor plan is for illustrative purposes only.

Calculations are based on RICS IPMS 3C standard.

GIRAFFE360





Move Estate Agents Cheltenham

1 The Clarence Clarence Parade, Cheltenham - GL50 3NY

01242 257333

cheltenham@move.uk.net

move.uk.net/

move
Property Sales & Lettings