



Down Street Mews, W1J

£9,970 Per calendar month

**Dexters**



## Down Street Mews, W1J

A beautifully refurbished and interior designed, two double bedroom, two bathroom apartment set in a secure, gated mews close to Green Park, in the heart of Mayfair.

The property has been refurbished by a leading interior designer to create a wonderful, bright contemporary space with exposed brick work, wooden flooring and luxurious built-in furniture and fixtures and fittings.

The lofty reception room has excellent dining and entertaining space with bespoke designer kitchen flooded by natural light and with a private balcony, air-conditioning and luxurious bathrooms.

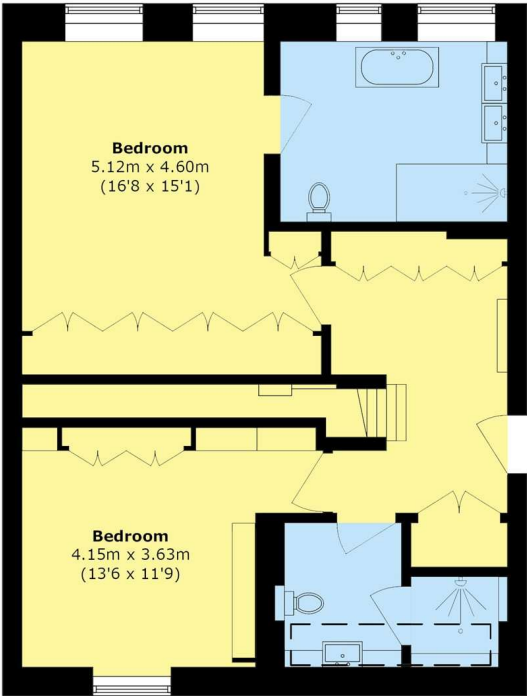
The property is located adjacent to Hyde Park and Green Park and close to all the luxury shops, boutiques, hotels, restaurants and private members clubs as well as a variety of galleries and museums.

### Features

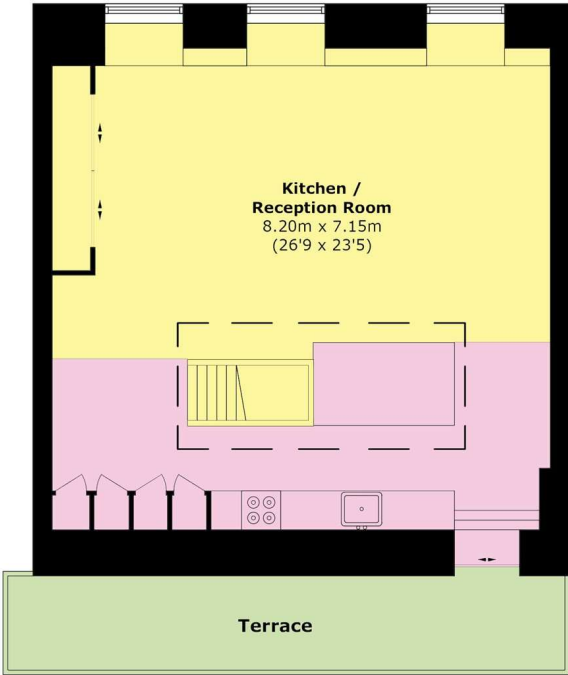
- Two Spacious Double Bedrooms
- Two Luxury Bathrooms
- Interior Designed
- Wooden Flooring
- Air-Conditioning



# Down Street Mews, London, W1J



**First Floor**



**Second Floor**

Total area (approx.): 137.6 sq. m (1481.1 sq. ft)  
Terrace area (approx.): 8.2 sq. m (88.6 sq. ft)