



78 Littlewood Street  
Rothwell, NN14 6DY

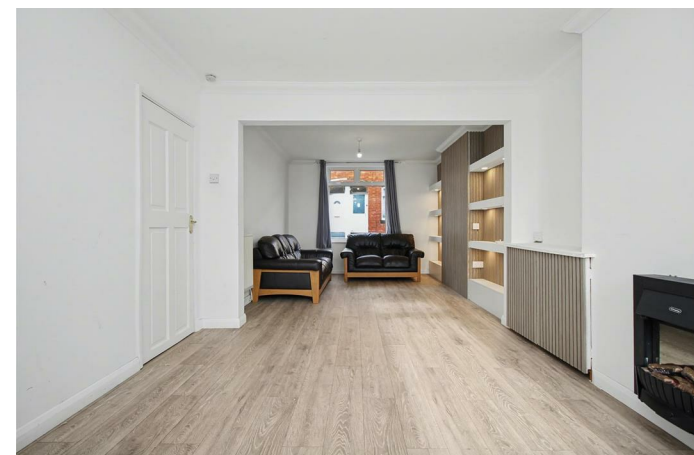
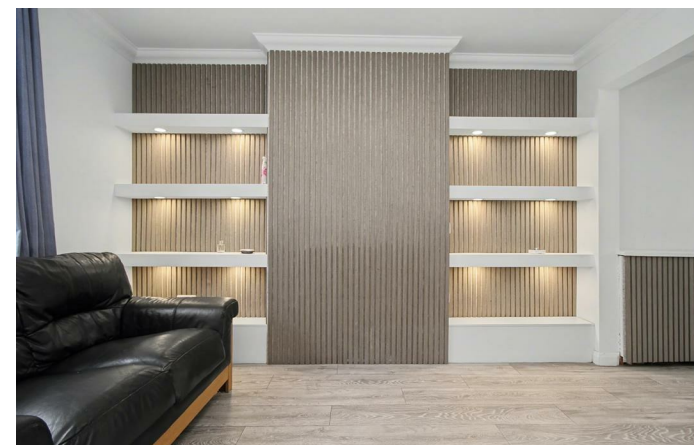


**Simpson & Partners**



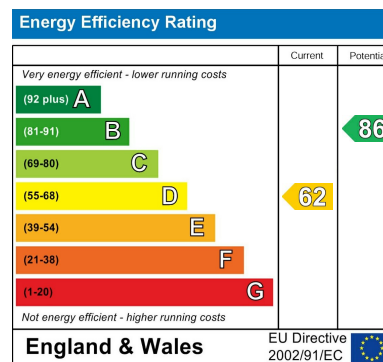
Simpson Ellson are delighted to offer to the rental market this super end terrace property ideally situated in the popular market town of Rothwell which enjoys excellent transport links and all local amenities. The very well presented accommodation comprises entrance hall, fabulous, spacious lounge/diner, fitted kitchen and downstairs family bathroom. Upstairs there are three great sized bedrooms and a further shower room. Large enclosed rear garden with a handy outbuilding for storage. Unfurnished. Available NOW!!! EPC D.

£1,150 PCM





Total area: approx. 1388.5 sq. feet



When you buy with Simpson and Partners, you know **you'll be in safe hands**. From the moment you walk through our doors, we'll make you **feel truly welcome**. Our sales consultants and financial advisors will take you through **every step of the process**, offering **free expert advice** along the way, from help choosing the right mortgage and insurance through to finding your conveyancer. And if you need help selling your home too, **with over 20 years of local experience, you can trust us to get you moving**.



**Simpson  
& Partners**

Making Every  
Journey Personal



01536 518200

[kettering@simpsonandpartners.co.uk](mailto:kettering@simpsonandpartners.co.uk)

<https://www.simpsonandpartners.co.uk/>

1 Silver Street, Kettering, Northants, NN16 0BN