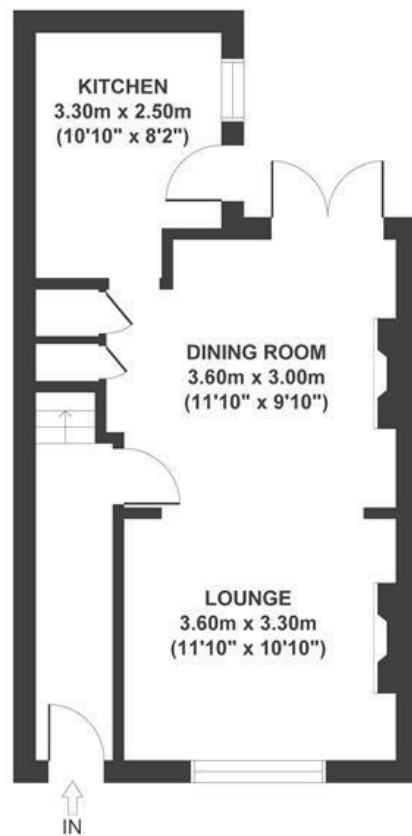


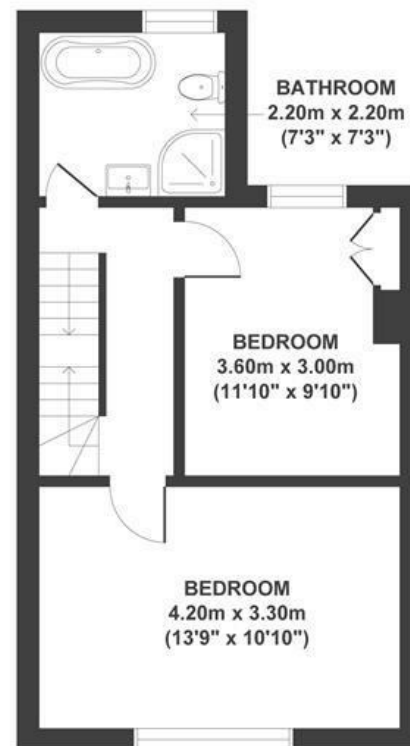
# Elmgrove Avenue

## EASTON

APPROXIMATE FLOOR AREA  
108 SQM / 1163 SQFT



GROUND FLOOR



FIRST FLOOR



SECOND FLOOR

**Boardwalk**

# Elmgrove

EASTON, BRISTOL

£

£400,000



BS5 0HS

zzz

3 Bedrooms



2 Bathrooms

*"We've loved having such a spacious living/dining area, which has been perfect for hosting friends for dinner parties and game nights. The area has a strong sense of community, with the Pickle Factory just around the corner hosting various events. We enjoy meeting up with friends at Sugarloaf and going for Sunday roasts at the Green Bank pub, both of which are within a short walk."*

