




King Charles Road, Shenley, Radlett

£675,000

 4  2  3



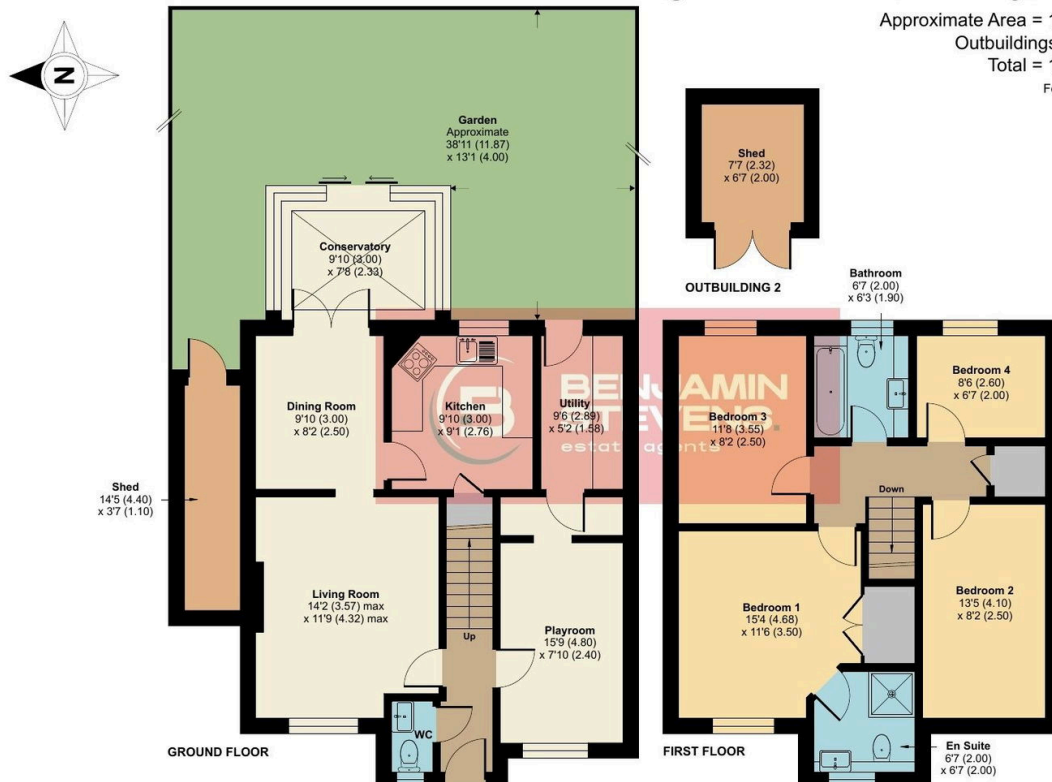
A bright and spacious FOUR BEDROOM, TWO BATHROOM, FOUR RECEPTION ROOM DETACHED FAMILY HOME forming part of the sought after Porters Park development in the heart of Shenley, conveniently located for all local shopping/transport facilities and in a great catchment area for all local schools. The property is being offered in good decorative order and benefits from: Double Glazed Windows, Gas Fired Heating To Radiators, Guest Cloakroom, Playroom, Living Room, Dining Room, Conservatory, Kitchen, Utility Room, Bedroom One With En Suite Shower Room, Three Further Bedrooms, Family Bathroom, Secluded Rear Garden, Off Street Parking.

Key Features

- DETACHED FAMILY HOME
- TWO BATHROOMS
- UTILITY ROOM
- OFF STREET PARKING
- FOUR BEDROOMS
- FOUR RECEPTION ROOMS
- SECLUDED REAR GARDEN
- GREAT CATCHMENT AREA FOR ALL LOCAL SCHOOLS

King Charles Road, Shenley, Radlett, WD7

Approximate Area = 1296 sq ft / 120.4 sq m
 Outbuildings = 102 sq ft / 9.4 sq m
 Total = 1398 sq ft / 129.8 sq m
 For identification only - Not to scale



Floor plan produced in accordance with RICS Property Measurement 2nd Edition, Incorporating International Property Measurement Standards (IPMS2 Residential). © nichcom 2025. Produced for Benjamin Stevens. REF: 1383854