



Durand Lane, Little Dunmow, CM6 3FS

**£1,750 PCM (per calendar month) PCM**  
**Holding Deposit equal to 1 weeks rent**  
**Tenancy Deposit equal to 5 weeks rent**  
**Council Tax Band: E**



Available from the 23rd March 2026 is this three bedroom town house the accommodation includes entrance hall, study, WC and kitchen on the ground floor, lounge bathroom and bedroom on the first floor and two further bedrooms both with ensuites on the second floor. Externally there is a rear garden, allocated parking and garage.



Entrance Hall

Study

10'10 x 7'10 (3.30m x 2.39m)

Ground Floor WC

Kitchen

14'2 x 13'9 (4.32m x 4.19m)

First Floor Landing

Lounge

14'2 x 13' (4.32m x 3.96m)

Bedroom

14'2 x 7'11 (4.32m x 2.41m)

Bathroom

Second Floor Landing

Bedroom

14'2 x 8'5 (4.32m x 2.57m)

Ensuite

Bedroom

14'2 x 9'11 (4.32m x 3.02m)

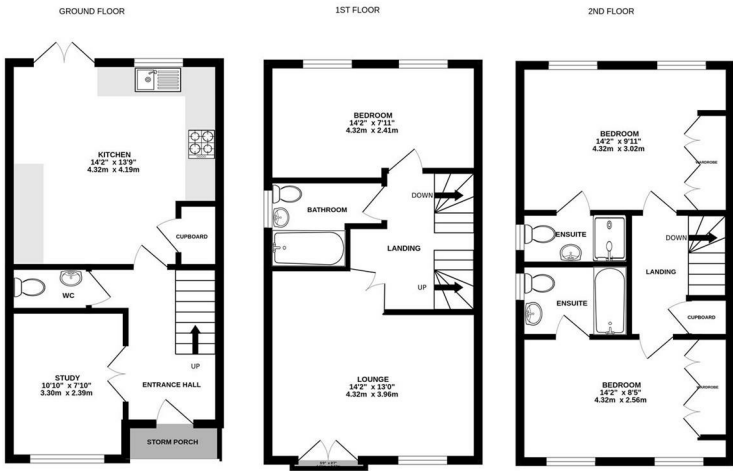
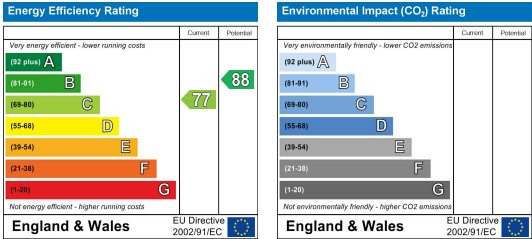
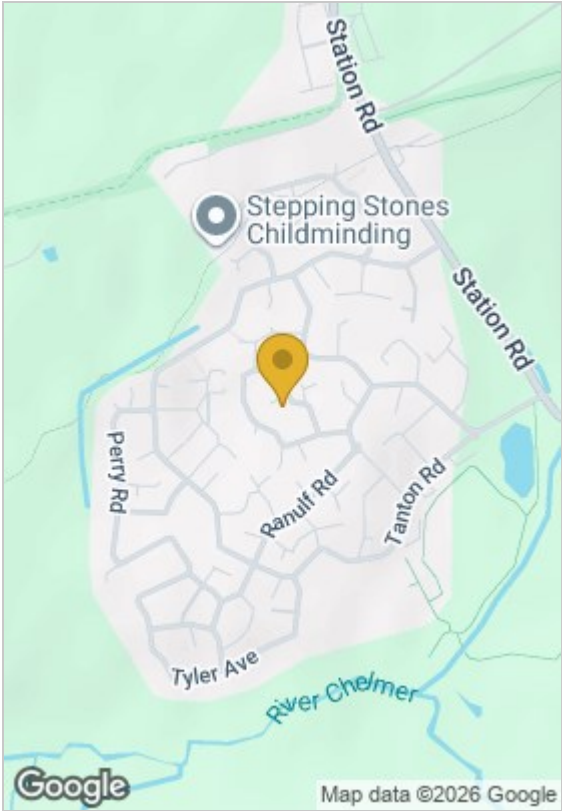
Ensuite

Garden

Garage & Parking

Please Note

Please note that the photos used in the marketing are from April 2024.



Whilst every attempt has been made to ensure the accuracy of the floorplan contained here, measurements of doors, windows, rooms and any other items are approximate and no responsibility is taken for any error, omission or mis-statement. This plan is for illustrative purposes only and should be used as such by any prospective purchaser. The services, systems and appliances shown have not been tested and no guarantee as to their operability or efficiency can be given. Made with Metropix ©2024

These particulars, whilst believed to be accurate are set out as a general outline only for guidance and do not constitute any part of an offer or contract. Interested parties should not rely on them as statements of representation of fact, but must satisfy themselves by inspection or otherwise as to their accuracy. No person in this firms employment has the authority to make or give any representation or warranty in respect of the property.