



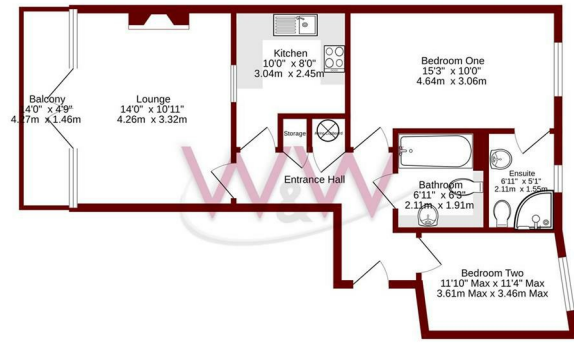
Arbour Court | | Whiteley | PO15 7FG

£1,100 PCM



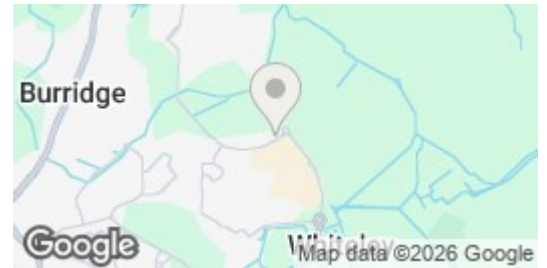


Ground Floor
589 sq.ft. (54.7 sq.m.) approx.



TOTAL FLOOR AREA: 589 sq.ft. (54.7 sq.m.) approx.
Whilst every effort has been made to ensure the accuracy of the foregoing information, measurements of areas, volumes, items and any other items are approximate and no responsibility is taken for any errors, omissions or misstatements. The plan is for illustrative purposes only and should be used as a guide only for prospective purchasers. The actual, true quantity or efficiency may vary from the stated figures. Maps will change 1/2025.

Energy Efficiency Rating		
	Current	Potential
Very energy efficient - lower running costs		
(92 plus) A		
(81-91) B		
(69-80) C		
(55-68) D		
(39-54) E		
(21-38) F		
(1-20) G		
Not energy efficient - higher running costs		
England & Wales	76	81
EU Directive 2002/91/EC		



Description

Modern Ground Floor Apartment To Rent ***Two Double Bedrooms ***En-Suite To Master Bedroom ***Stones throw from Whiteley Shopping Centre and walking distance to Solent Business Park ***Allocated Parking and Visitors Spaces ***Spacious Living Room *** Fitted Kitchen ***Balcony ***Long Term Let Available

Key features

- Ground Floor Apartment
- Two Bedrooms
- Allocated Parking
- Walking Distance to Whiteley Shopping Centre
- Own Balcony
- Two Bathrooms
- Visitor Parking



H3 Whiteley Shopping Centre
 Whiteley Way
 Whiteley
 Hants
 PO15 7PD
 01489 580800
 pm@walkerwaterer.co.uk
 www.walkerwaterer.co.uk