



Barton Quarter, Horwich, BL6

£1,300 Per Month

Nestled within the heart of Horwich, Barton Quarter introduces an enticing collection of 2 and 3-bedroom homes to rent.

Welcome to the Shoemaker – a beautifully finished three bedroom family home.

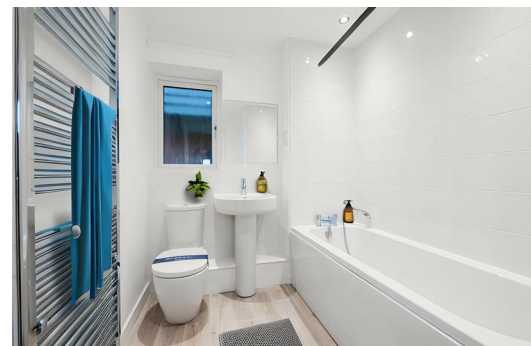
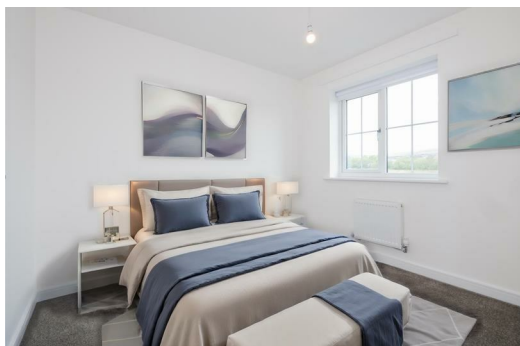
Entering this property, you will find yourself in the hallway with the WC to one side. Further along you will enter the large living space on the ground floor, leading in to an open-plan kitchen/dining area. This light and airy space benefits from French doors leading to your private back garden.

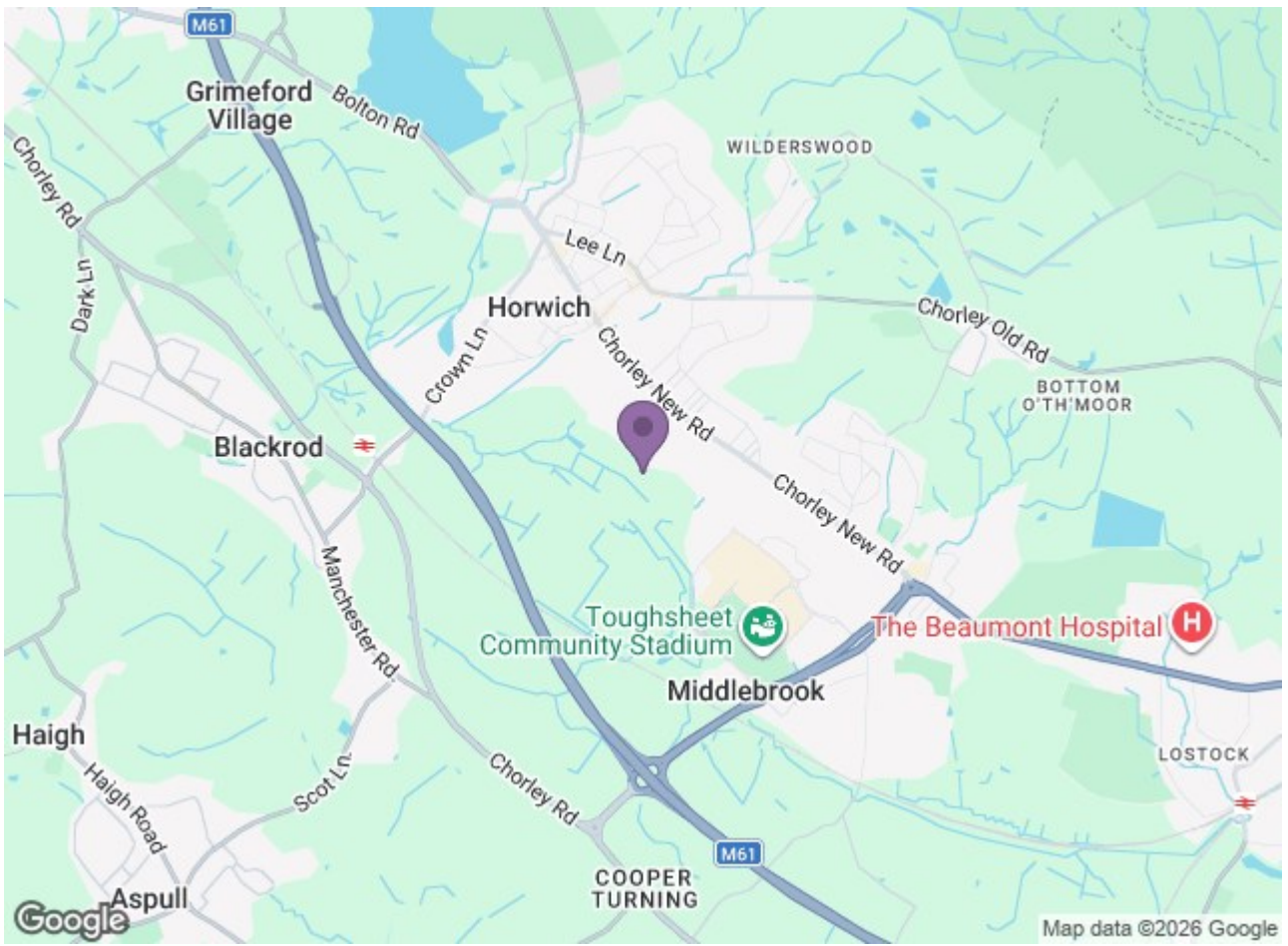
Upstairs, you will find a large main bedroom, along with two further bedrooms and a family bathroom.

With a history rooted in its former railway and mill town heritage, Horwich has gracefully transformed into a thriving and dynamic community. Barton Quarter is thoughtfully positioned to provide residents with easy access to fantastic local amenities, including the Middlebrook Retail Park, and a diverse array of shops and leisure options, such as the renowned Bolton Wanderers football club.

This appealing community caters to the needs of both local residents looking for a vibrant environment and commuters seeking seamless connections to nearby towns and cities like Bolton, Chorley, Manchester, and Preston.

Access the site by using postcode BL6 5UE





Energy Efficiency Rating		Environmental Impact (CO ₂) Rating	
Current	Target	Current	Target
Energy A	Energy D	Carbon A	Carbon D
Energy B	Energy E	Carbon B	Carbon E
Energy C	Energy F	Carbon C	Carbon F
Energy D	Energy G	Carbon D	Carbon G
Energy E	Energy H	Carbon E	Carbon H
Energy F	Energy I	Carbon F	Carbon I
Energy G	Energy J	Carbon G	Carbon J
Energy H	Energy K	Carbon H	Carbon K
Energy I	Energy L	Carbon I	Carbon L
Energy J	Energy M	Carbon J	Carbon M
Energy K	Energy N	Carbon K	Carbon N
Energy L	Energy O	Carbon L	Carbon O
Energy M	Energy P	Carbon M	Carbon P
Energy N	Energy Q	Carbon N	Carbon Q
Energy O	Energy R	Carbon O	Carbon R
Energy P	Energy S	Carbon P	Carbon S
Energy Q	Energy T	Carbon Q	Carbon T
Energy R	Energy U	Carbon R	Carbon U
Energy S	Energy V	Carbon S	Carbon V
Energy T	Energy W	Carbon T	Carbon W
Energy U	Energy X	Carbon U	Carbon X
Energy V	Energy Y	Carbon V	Carbon Y
Energy W	Energy Z	Carbon W	Carbon Z

Energy Efficiency Rating: 84 (Energy D)
 Environmental Impact (CO₂) Rating: 37 (Carbon D)