



Fairfield Close

Harpenden, AL5 5RZ

Well presented, detached four bedroom home of circa 1,442 sq ft offering superb potential to extend (STPP). West facing private rear garden, garage and driveway. Within walking distance of the town centre and station and well placed for excellent schooling. ****CHAIN FREE****

Guide price £930,000

Fairfield Close

Harpenden, AL5 5RZ



- Detached four bedroom house
- **CHAIN FREE**
- Well placed for excellent schooling
- Circa 1,442 sq ft
- Garage & driveway
- Walking distance of town centre & station
- Scope to extend (STPP)
- West facing private rear garden
- Council Tax Band F

Entrance Hall

Cloakroom

Living Room

12'11" x 20'11" (3.94 x 6.38)

Kitchen/Breakfast Room

13'0" x 20'11" (3.97 x 6.40)

Study

8'1" x 8'0" (2.48 x 2.44)

Landing

Bedroom One

11'11" x 13'8" (3.65 x 4.17)

En-suite with shower

Bedroom Two

11'2" x 10'7" (3.41 x 3.25)

Bedroom Three

11'10" x 7'10" (3.63 x 2.41)

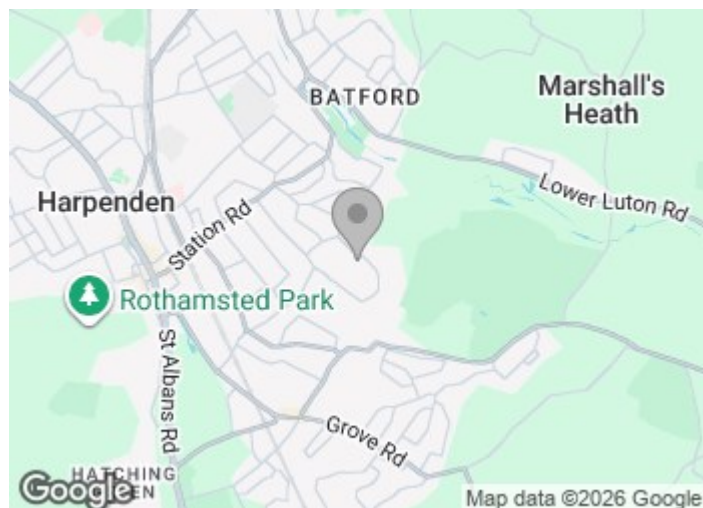
Bedroom Four

11'11" x 6'10" (3.65 x 2.10)

Bathroom

Garage

16'0" x 7'0" (4.88 x 2.15)

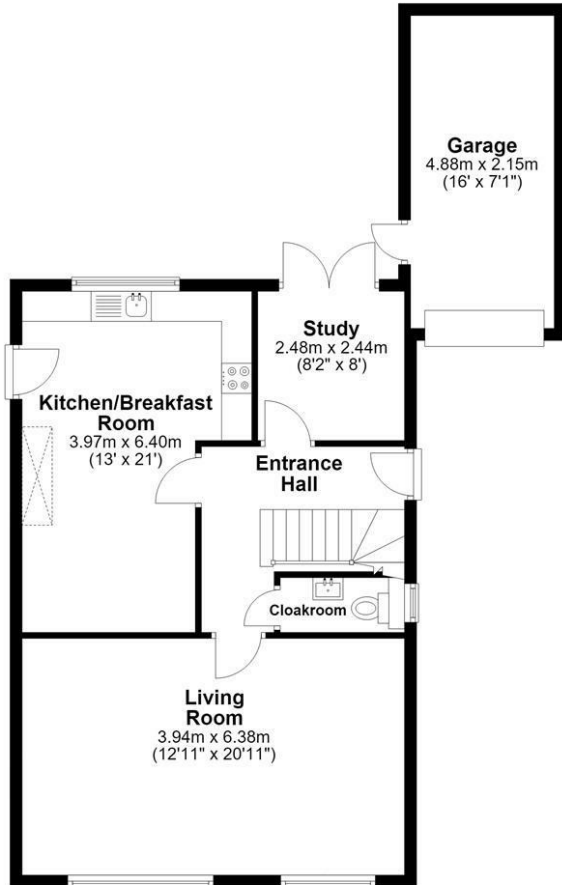




Floor Plan

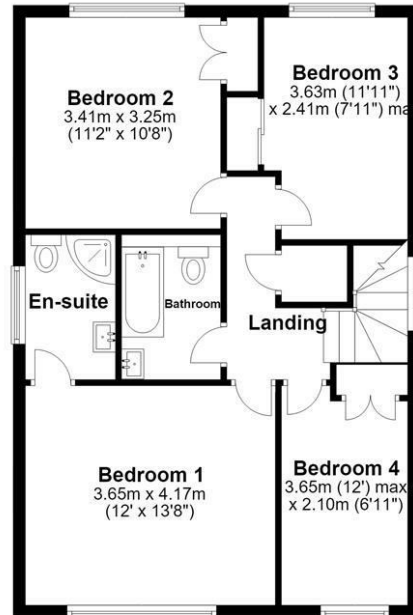
Ground Floor

Approx. 72.5 sq. metres (780.1 sq. feet)



First Floor

Approx. 61.6 sq. metres (662.8 sq. feet)



Total area: approx. 134.0 sq. metres (1442.8 sq. feet)

Sketch layout only. Not to scale. Plan produced for Whittaker & Co.
Plan produced using PlanUp.

These particulars, whilst believed to be accurate are set out as a general outline only for guidance and do not constitute any part of an offer or contract. Intending purchasers should not rely on them as statements of representation of fact, but must satisfy themselves by inspection or otherwise as to their accuracy. No person in this firm's employment has the authority to make or give any representation or warranty in respect of the property.

