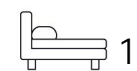


Living
made
better

Patterson Tower
Greenwich, SE3 9FY



£2,000 PCM

Patterson Tower, Greenwich, SE3 9FY

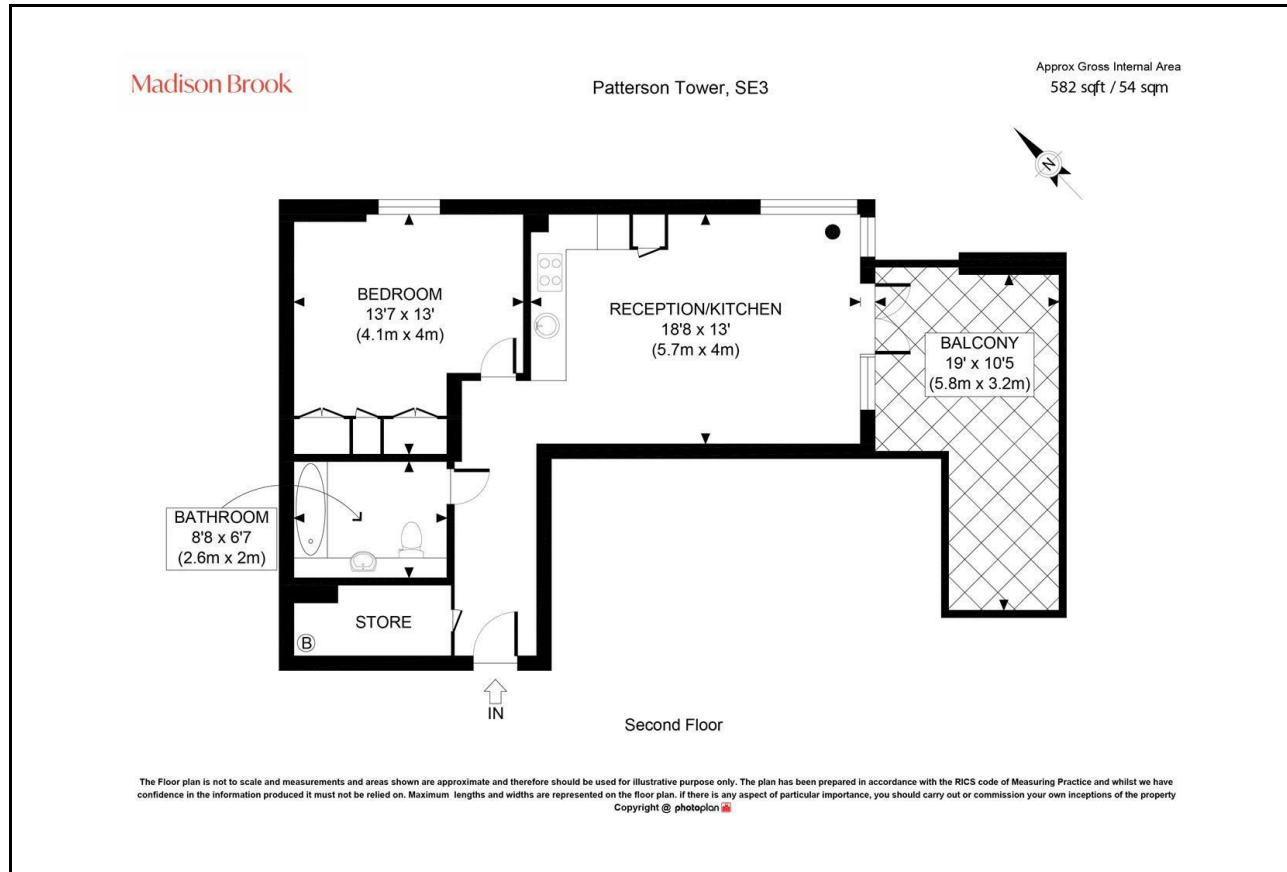
Madison Brook

Property Summary

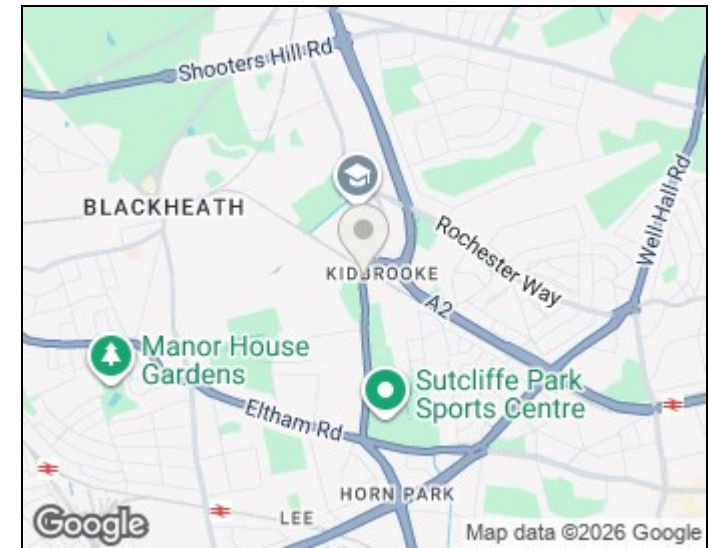
Located within the sought-after Patterson Tower development, this well-presented one-bedroom apartment offers bright and contemporary living accommodation. The property features a spacious open-plan reception and kitchen area, a generously-sized double bedroom, a three-piece bathroom and a private terrace.

Residents benefit from concierge service and a range of amenities on-site, with the property situated moments from the station for excellent transport connections into Canary Wharf, the City and beyond.

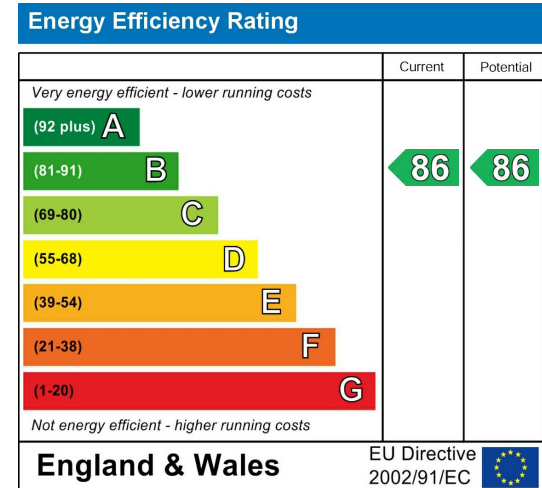
Floorplan



Area Map



Energy Efficiency Graph



These particulars, whilst believed to be accurate are set out as a general outline only for guidance and do not constitute any part of an offer or contract. Intending purchasers should not rely on them as statements of representation of fact, but must satisfy themselves by inspection or otherwise as to their accuracy. No person in this firm's employment has the authority to make or give any representation or warranty in respect of the property.

43 Loampit Vale, Lewisham, London, SE13 7FT

Tel: 020 3946 6200 Email:

lewisham@madisonbrook.com

<https://madisonbrook.com/>