

Hanworth Road, TW3

£349,950

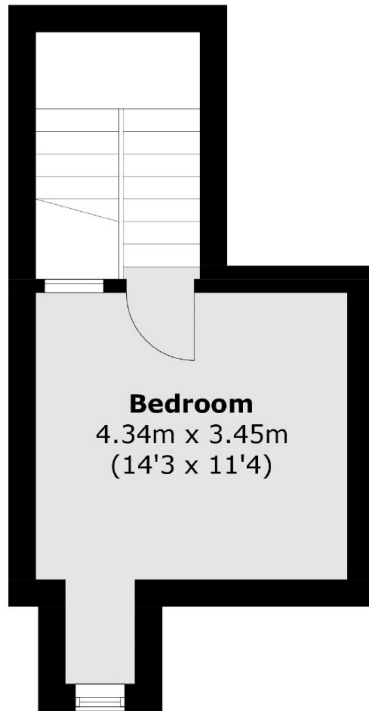
Offered to the market with no onward chain, we are delighted to bring to the market a rare opportunity to acquire this substantial newly refurbished first floor Victorian conversion arranged over two floors. Offering over 800 square feet of living space including two bedrooms, one bathrooms, separate WC, kitchen and reception room. Further benefits include a newly extended lease, a driveway for off street parking, and private rear garden making this a fantastic opportunity to acquire a prime property on a sought after road and popular location.

Situated in a sought after location, Hanworth Road is close to excellent local schools, park and transport links. Neighbouring areas of Whitton, Twickenham and Isleworth are all within easy reach.

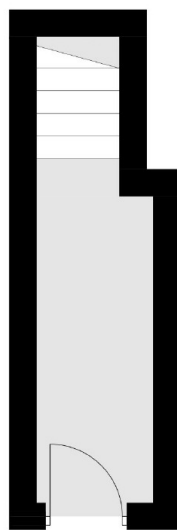
Features

- Split-Level Period Conversion
- Two Double Bedrooms
- Large Private Garden
- Newly Refurbished
- Driveway
- No Onward Chain

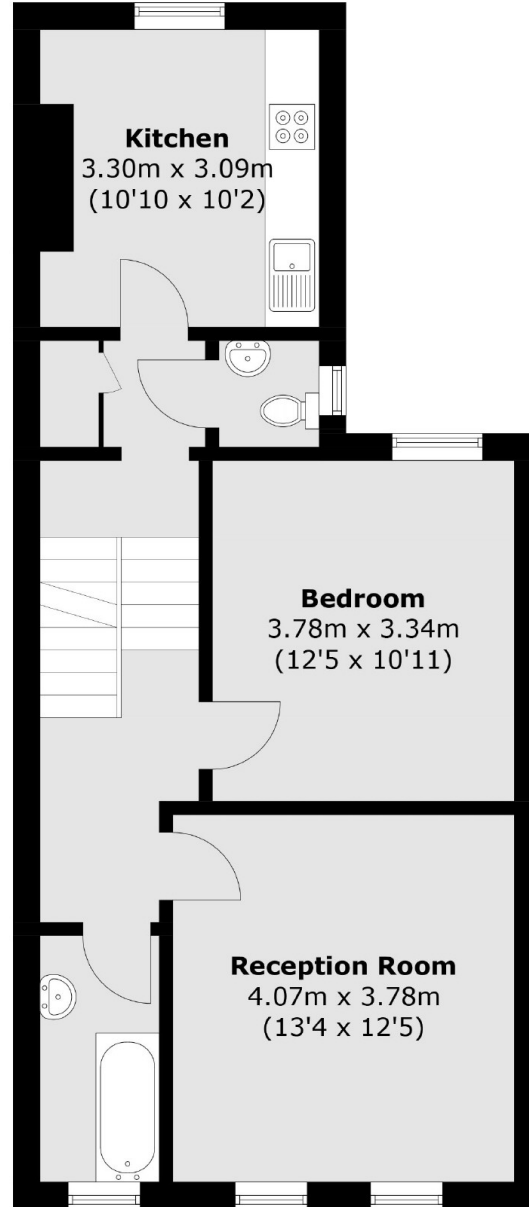
Hanworth Road, Hounslow, TW3



Second Floor



Ground Floor



First Floor

Total area (approx.): 80.0 sq. m (861.1 sq. ft)