



Stepney City Apartments, 49 Clark Street, London E1 3HS

 **2 Bedrooms**  **2 Bathrooms**  **1 Reception Room**



Stepney City Apartments, London, E1

Leasehold (975 years remaining)

A striking duplex penthouse spanning the second and third floors with a spectacular private terrace overlooking the city skyline. This light-filled two-bedroom apartment in Stepney City Apartments combines contemporary design with exceptional outdoor living space, perfectly positioned between Shoreditch and the City.

Key Features

- 2 Bedrooms, 2 Bathrooms
- Large decked terrace
- Secure parking space
- Council Tax: **E**
- Service Charge: **£6,680 P/A**
- Ground Rent: **£450 P/A**
- Excellent transport links
- EPC: **B**

Situated in the heart of Stepney, this exceptional duplex penthouse at Stepney City Apartments offers a rare opportunity to enjoy elevated city living with the added luxury of a substantial private terrace. The development's modern architecture provides a stylish residential sanctuary within one of East London's most vibrant and rapidly evolving neighbourhoods, where historic charm meets contemporary urban energy.

Spanning two floors, the apartment is flooded with natural light through floor-to-ceiling windows that frame breathtaking city skyline views. The open-plan kitchen and reception area creates a sophisticated entertaining space, seamlessly flowing onto the expansive decked terrace-an exceptional outdoor retreat perfect for al fresco dining, morning coffee, or evening drinks against the backdrop of London's iconic skyline. The two generously proportioned double bedrooms offer peaceful private quarters.



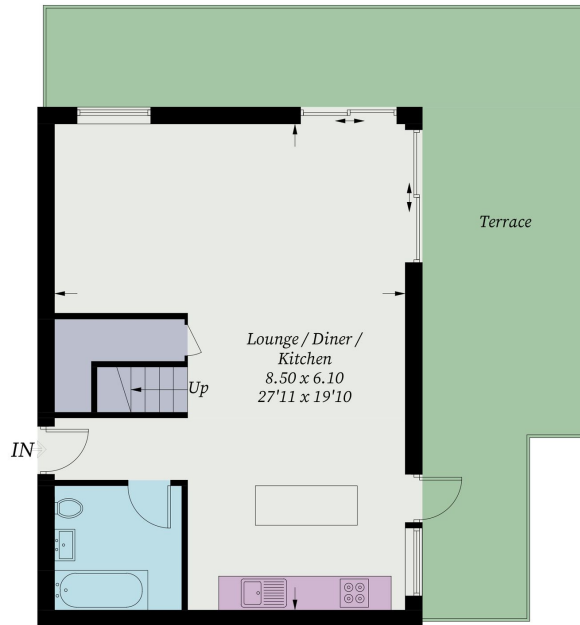




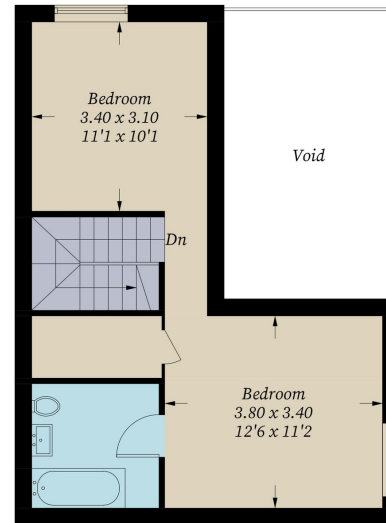


Stepney City Apartments, E1

Approximate Gross Internal Area = 87.7 sq m / 944 sq ft



Second Floor



Third Floor

Illustration for identification purposes only, measurements are approximate, not to scale. Fourlabs.co © (ID1310877)