



WESTMINSTER COURT

PER MONTH

£1,475 Per Month

Westminster Court

Worthing, BN11 2EQ

PROPERTY SUMMARY

We are delighted to offer this fantastic, spacious 1st floor, 2 bed apartment with private balcony and direct sea views!!

This well presented property boasts of 2 great sized double bedrooms, south facing bright & spacious lounge with direct access to balcony and sea views, kitchen with direct sea views also, modern shower room. All in great neutral decorative order, modern thermostatic electric heating, uPVC double glazing throughout. Non allocated parking on a first come first served basis.

Superb rarely available location facing the seafront and in close proximity to the bustling High Street with it's charming restaurants, pubs, shops, supermarkets and Splashpoint swimming & health centre. Excellent bus routes and walking distance to mainline train station.

Lease requires written consent from block managing agents for permission.

Minimum £45,000 p/a income required for referencing purposes,

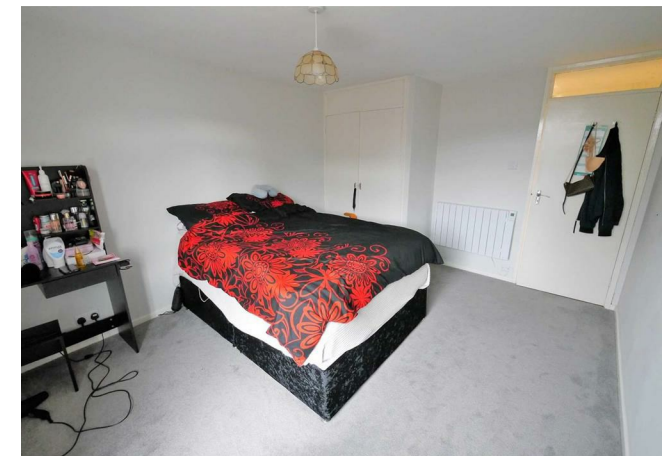
2

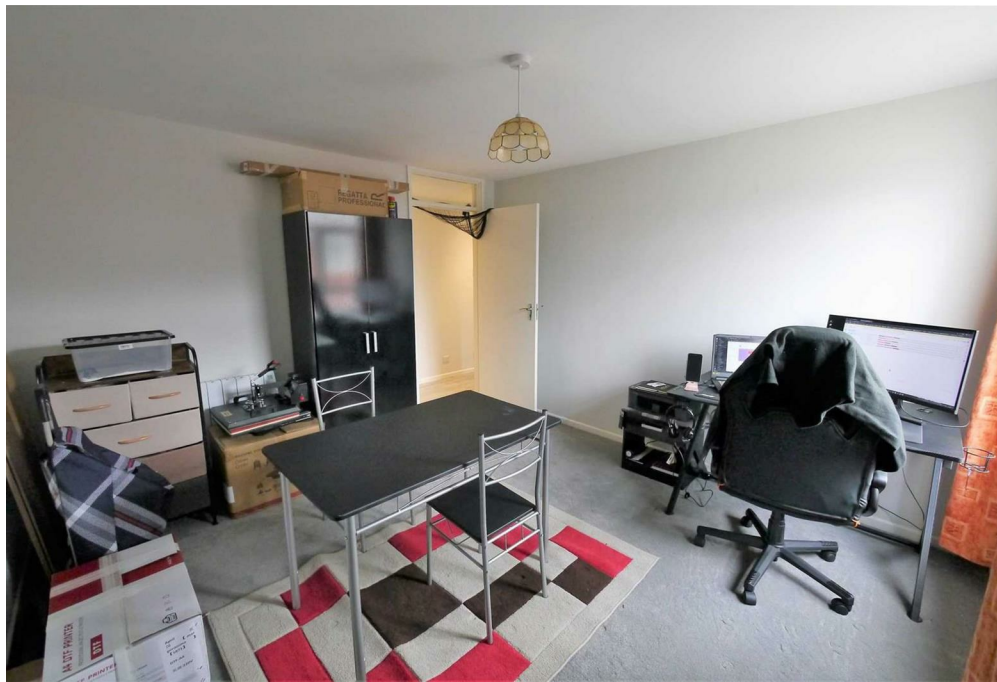


1



1





LOCAL AUTHORITY

Worthing

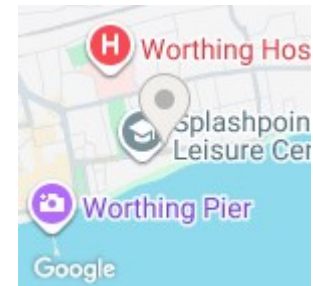
TENURE

COUNCIL TAX BAND

B

VIEWINGS

By prior appointment only



Energy Efficiency Rating		
	Current	Potential
Very energy efficient - lower running costs		
(92 plus) A		
(81-91) B		
(69-80) C		
(55-68) D	57	73
(39-54) E		
(21-38) F		
(1-20) G		
Not energy efficient - higher running costs		
England & Wales		
EU Directive 2002/91/EC		

Agents Note: Whilst every care has been taken to prepare these particulars, they are for guidance purposes only. All measurements are approximate and are for general guidance purposes only and whilst every care has been taken to ensure their accuracy, they should not be relied upon and potential buyers/tenants are advised to recheck the measurements



OFFICE ADDRESS
22 South Farm Road
Worthing
West Sussex
BN14 7AA

OFFICE DETAILS
01903 532225
worthing@localagent.co.uk
www.openhouseworthing.co.uk