



Shobnall Street
Burton-On-Trent

burchell
edwards



Property Description

A spacious and recently improved four bedroom family home located in Shobnall street that offers a unique layout that could suit a growing family looking for ways to bring multiple generations together while maintaining their own individual space. This fantastic property could be used as a standard four bedroom, two reception room, three bathroom house, or it could be used as three individual apartment style spaces or any combination of the two. With parking to the rear, recently modernised kitchen and bathrooms and so much more. Book your viewing with Burchell Edwards today!

Entrance Hall

Door to frontage, Stairs to 1st floor, access to:

Main Lounge

DG window to front, Central heating radiators, Understairs cupboard.

Kitchen

modern kitchen with wall and base units, stainless steel sink and drainer, space for electric oven, ex hood, space and plumbing for washing machine, fridge freezer and dish washer.

Dining Room

Part of a potential self contained flat and including central heating radiator, DG french doors to garden, second kitchen includes work surfaces, plumbing for appliances, SS sink and drainer.

Shower Room

Accessed off of dining room and offers washing facilities.

2nd Lounge

Provides a second reception space linked to

the dining room.

Landing

Gives access to bedrooms and loft access

Bedroom 1

DG window to rear and central heating radiator

Bedroom 2

DG window to front and central heating radiator

Bedroom 3

DG window to rear and central heating radiator

Bedroom 4

DG window to front

Bathroom

WC, wash hand basin, Bath, DG window.

Rear Garden

Slabbed garden, access to parking to the rear

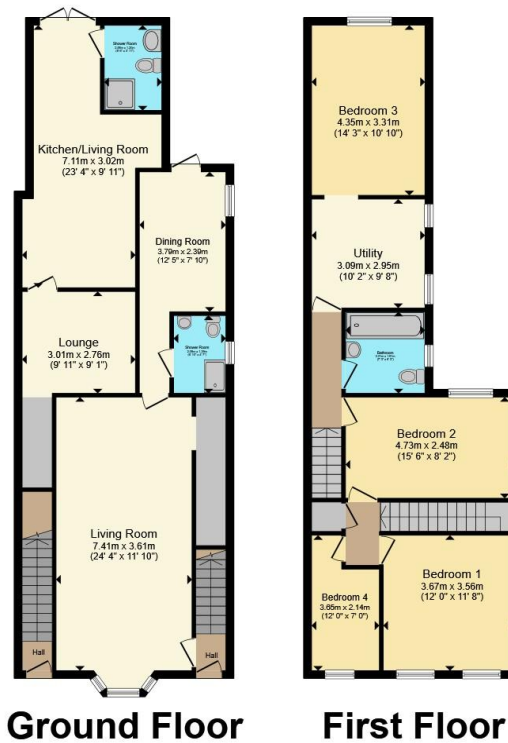
Frontage

Small walled frontage with gate providing access.









Total floor area 157.4 m² (1,695 sq.ft.) approx

This floor plan is for illustrative purposes only. It is not drawn to scale. Any measurements, floor areas (including any total floor area), openings and orientation are approximate. No details are guaranteed, they cannot be relied upon for any purpose and they do not form part of any agreement. No liability is taken for any error, omission or misstatement. A party must rely upon its own inspection(s). Powered by www.propertybox.io



To view this property please contact Burchell Edwards on

T 01283 530 169
E burton@burchelledwards.co.uk

Britannia House Station Street
 BURTON-ON-TRENT DE14 1AN

EPC Rating: Council Tax
 Awaited Band: B

Tenure: Freehold

view this property online burchelledwards.co.uk/Property/BUT211477



1. MONEY LAUNDERING REGULATIONS Intending purchasers will be asked to produce identification documentation at a later stage and we would ask for your co-operation in order that there will be no delay in agreeing the sale. 2. These particulars do not constitute part or all of an offer or contract. 3. The measurements indicated are supplied for guidance only and as such must be considered incorrect. Potential buyers are advised to recheck measurements before committing to any expense. 4. We have not tested any apparatus, equipment, fixtures, fittings or services and it is in the buyers interest to check the working condition of any appliances.

Burchell Edwards is a trading name of Connells Residential which is registered in England and Wales under company number 1489613, Registered Office is Cumbria House, 16-20 Hockliffe Street, Leighton Buzzard, Bedfordshire, LU7 1GN. VAT Registration Number is 500 2481 05.

See all our properties at www.burchelledwards.co.uk | www.rightmove.co.uk | www.zoopla.co.uk

Property Ref: BUT211477 - 0004