

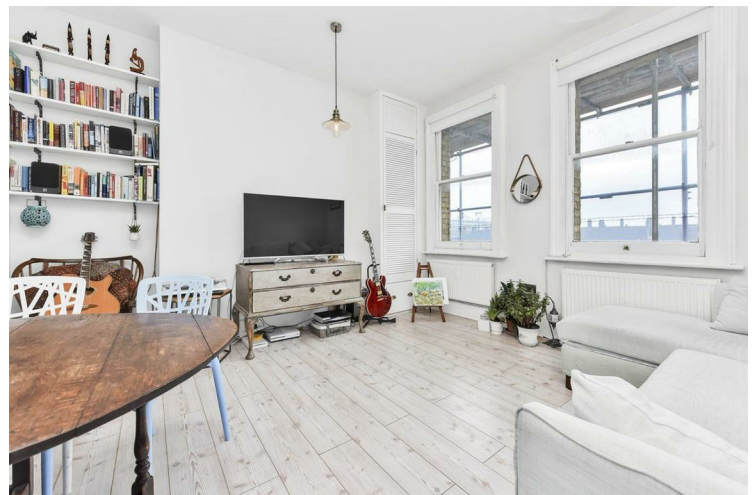


29 Devonshire House Bath Terrace SE1

£2,000 PCM

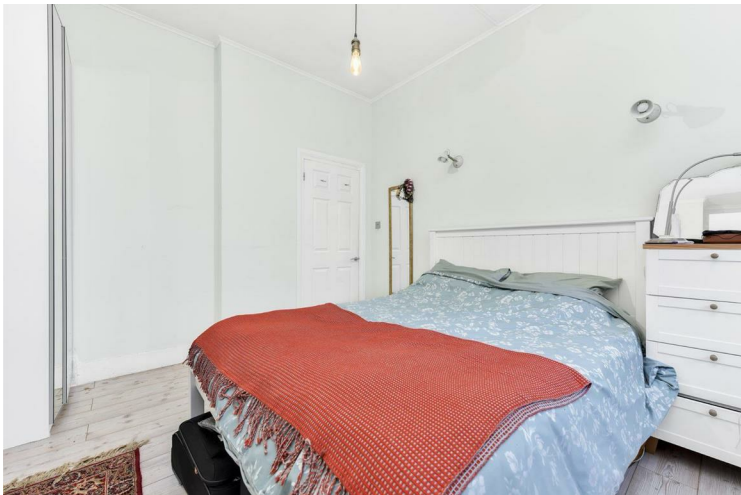
Pleased to market this immaculate one bed apartment located on Bath Terrace SE1. The whole property is very well proportioned and presented in immaculate condition throughout. The property comes furnished, comprising of a beautiful lounge, fitted kitchen with appliances, double bedroom with built in wardrobe and a modern bathroom.

Call the lettings department to reserve a viewing 0207 015 1360.



- One Double Bedroom • Furnished • Superb Location • Wood Flooring Throughout • Bath Terrace SE1 • Please Contact Us On Whatsapp - 07418371565







Energy Efficiency Rating		
	Current	Potential
<i>Very energy efficient - lower running costs</i>		
(92 plus) A		
(81-91) B		
(69-80) C		
(55-68) D		
(39-54) E		
(21-38) F		
(1-20) G		
<i>Not energy efficient - higher running costs</i>		
England & Wales	EU Directive 2002/91/EC 	

Agents Note: Whilst every care has been taken to prepare these particulars, they are for guidance purposes only. All measurements are approximate and are for general guidance purposes only and whilst every care has been taken to ensure their accuracy, they should not be relied upon and potential buyers/tenants are advised to recheck the measurements

Borough Lettings
230 Borough High Street
London
SE1 1JX

020 7015 1360
enquiries@leonardleese.com
www.leonardleese.com

