



Connells

Brookside
Cophorne



Property Description

Occupying a desirable corner position in the heart of Cophorne Village, this well-presented three-bedroom semi-detached home offers spacious and versatile accommodation, together with excellent potential for further enhancement, subject to the necessary consents.

The ground floor features a generous through living/dining room, providing a bright and flexible space for both family living and entertaining. To the rear, the kitchen offers exciting scope for reconfiguration, with potential to create a stylish open-plan kitchen/breakfast room.

Upstairs are three well-proportioned bedrooms and a modern family bathroom, offering flexible accommodation for families, guests or home working.

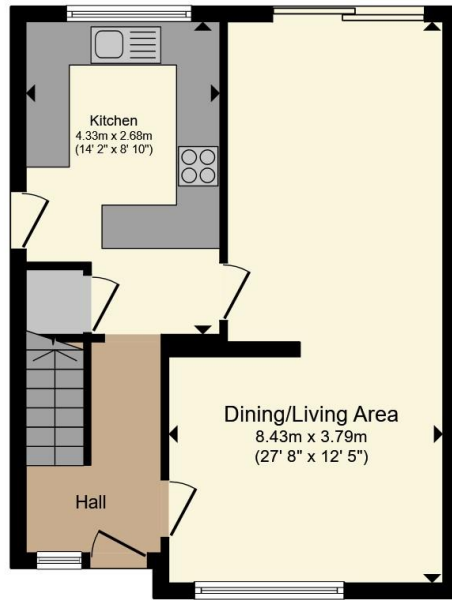
Outside, the property benefits from a good-sized rear garden, garage and private driveway. The prominent corner plot also presents an opportunity to extend to the side, subject to planning permission.

Offered with no onward chain, this attractive home combines immediate comfort with excellent future potential, all within easy reach of local amenities, the M23, Gatwick Airport and Three Bridges railway station.

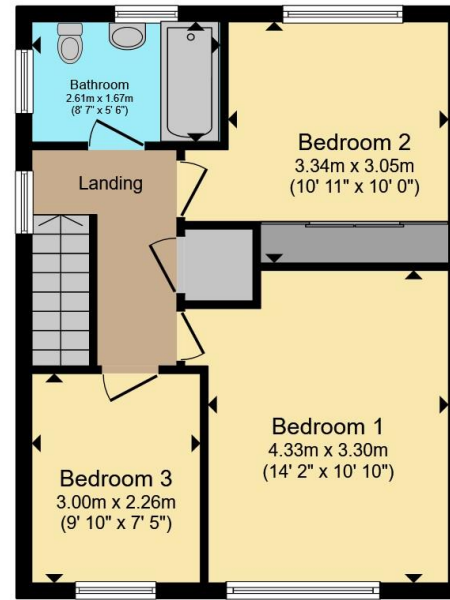




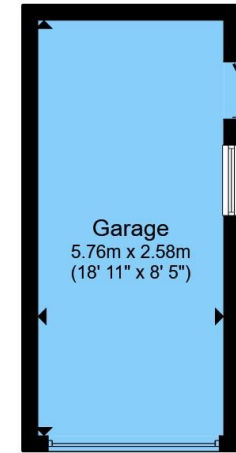




Ground Floor



First Floor



Garage

Total floor area 103.5 m² (1,114 sq.ft.) approx

This floor plan is for illustrative purposes only. It is not drawn to scale. Any measurements, floor areas (including any total floor area), openings and orientation are approximate. No details are guaranteed, they cannot be relied upon for any purpose and they do not form part of any agreement. No liability is taken for any error, omission or misstatement. A party must rely upon its own inspection(s). Powered by www.propertybox.io



To view this property please contact Connells on

T 01342 717 727
E cophorne@connells.co.uk

4 Copthorne Bank
COPTHORNE RH10 3QX

EPC Rating: C Council Tax
Band: D

Tenure: Freehold

view this property online connells.co.uk/Property/COP404476



1. MONEY LAUNDERING REGULATIONS Intending purchasers will be asked to produce identification documentation at a later stage and we would ask for your co-operation in order that there will be no delay in agreeing the sale. 2. These particulars do not constitute part or all of an offer or contract. 3. The measurements indicated are supplied for guidance only and as such must be considered incorrect. Potential buyers are advised to recheck measurements before committing to any expense. 4. We have not tested any apparatus, equipment, fixtures, fittings or services and it is in the buyers interest to check the working condition of any appliances.

Connells Residential is registered in England and Wales under company number 1489613, Registered Office is Cumbria House, 16-20 Hockliffe Street, Leighton Buzzard, Bedfordshire, LU7 1GN. VAT Registration Number is 500 2481 05.

See all our properties at www.connells.co.uk | www.rightmove.co.uk | www.zoopla.co.uk

Property Ref: COP404476 - 0002