



Folgate Street, E1

£800,000

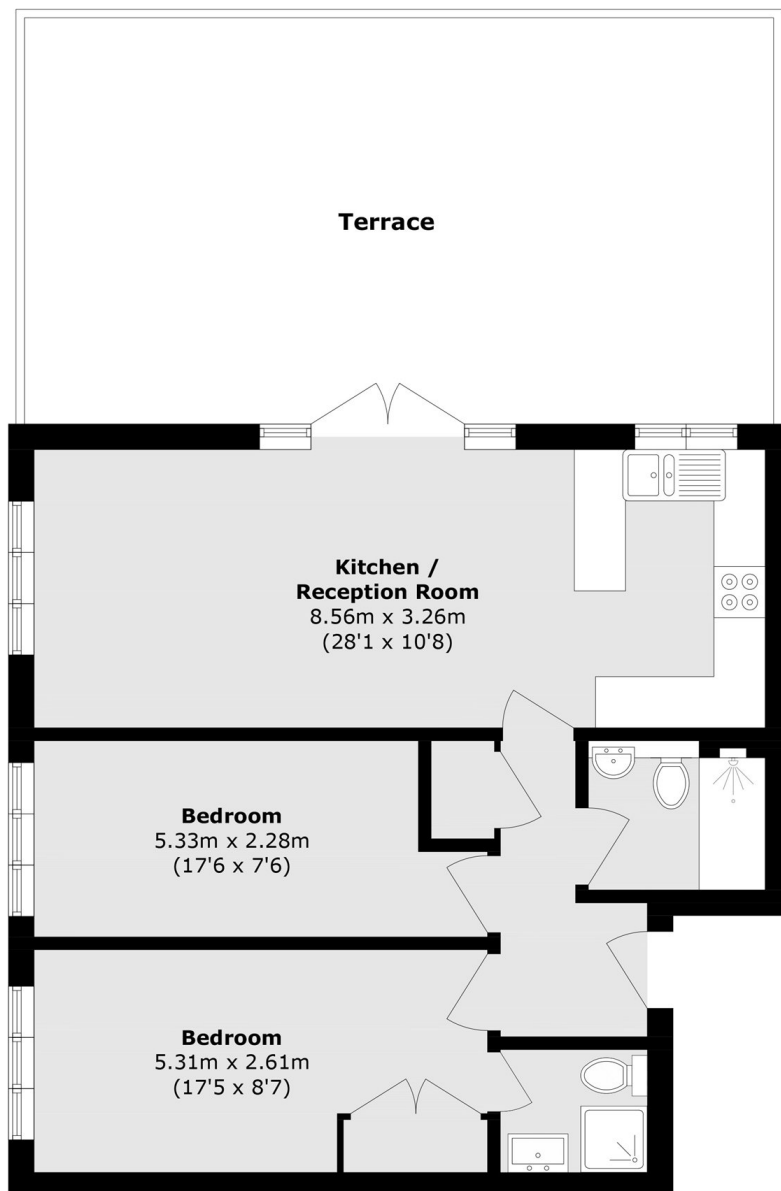
This top floor, two double bedroom, two bathroom apartment in the heart of Spitalfields. The apartment comprises a modern, open-plan kitchen/living room which leads onto a vast south-facing, private, terrace, only one of two in the block, two large double bedrooms, one with an en-suite and a contemporary family bathroom. The apartment features air conditioning throughout. Residents benefit from an on-site concierge and off-street parking.

Folgate Street is a cobbled street located on the edge of Spitalfields Market. The location offers a range of fashionable shops, bars, restaurants, entertainment and transport links in Brick Lane, Liverpool Street and Shoreditch.

Features

- Large private terrace
- Air Conditioning
- Off Street Parking
- South Facing
- Concierge
- Top Floor

Folgate Street, London, E1



Total area (approx.): 67.9 sq. m (730.8 sq. ft)
Terrace area (approx.): 41.7 sq. m (448.8 sq. ft)