



Stockwell Park Walk, Brixton, SW9

2 bedroom flat - purpose built for sale

£635,000

Leasehold

Property Details

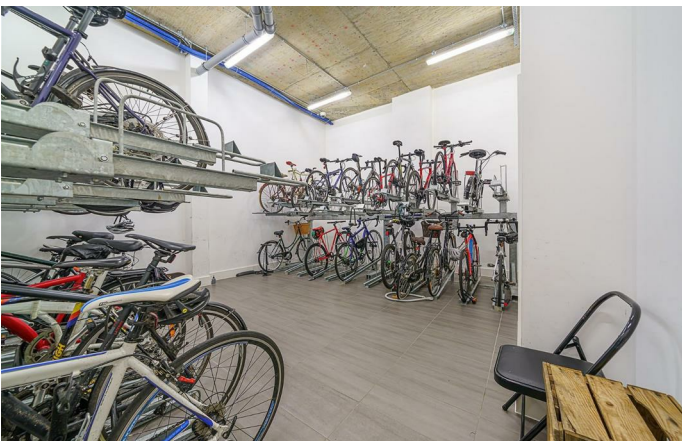
A pristine and expansive two double bedroom, two bathroom apartment with a winter garden terrace, set on the first floor of a luxury modern development within the Brixton-Stockwell-Clapham Triangle. Extending over 1,000 square feet including the winter garden, this exceptional home offers rare lateral proportions, around 35% larger than the average two-bed in the development, with a house-like flow, excellent light and a quiet, secure setting. The standout feature is the vast open-plan living space, nearly seven metres in length, ideal for entertaining, dining and working from home, complete with integrated speakers. A sleek modern kitchen offers ample storage and integrated appliances. The winter garden extends the living space, offering a versatile, light-filled area with park views. Both bedrooms are large doubles, the principal with en-suite and terrace access. Further benefits include a utility cupboard, underfloor heating, lift access, residents' gardens, 24hr CCTV and onsite security and bike storage.

Features

- Two double bedrooms
- Two bathrooms
- Winter garden terrace off lounge and bedroom
- Secure modern development
- Over 1,000 square feet - the largest in the building
- Residents garden, bike storage and multiple lifts
- Convenient location between Brixton, Stockwell and Clapham
- Brixton Tube a five-minute walk
- Chain-free

Council tax band D EPC rating B (85)



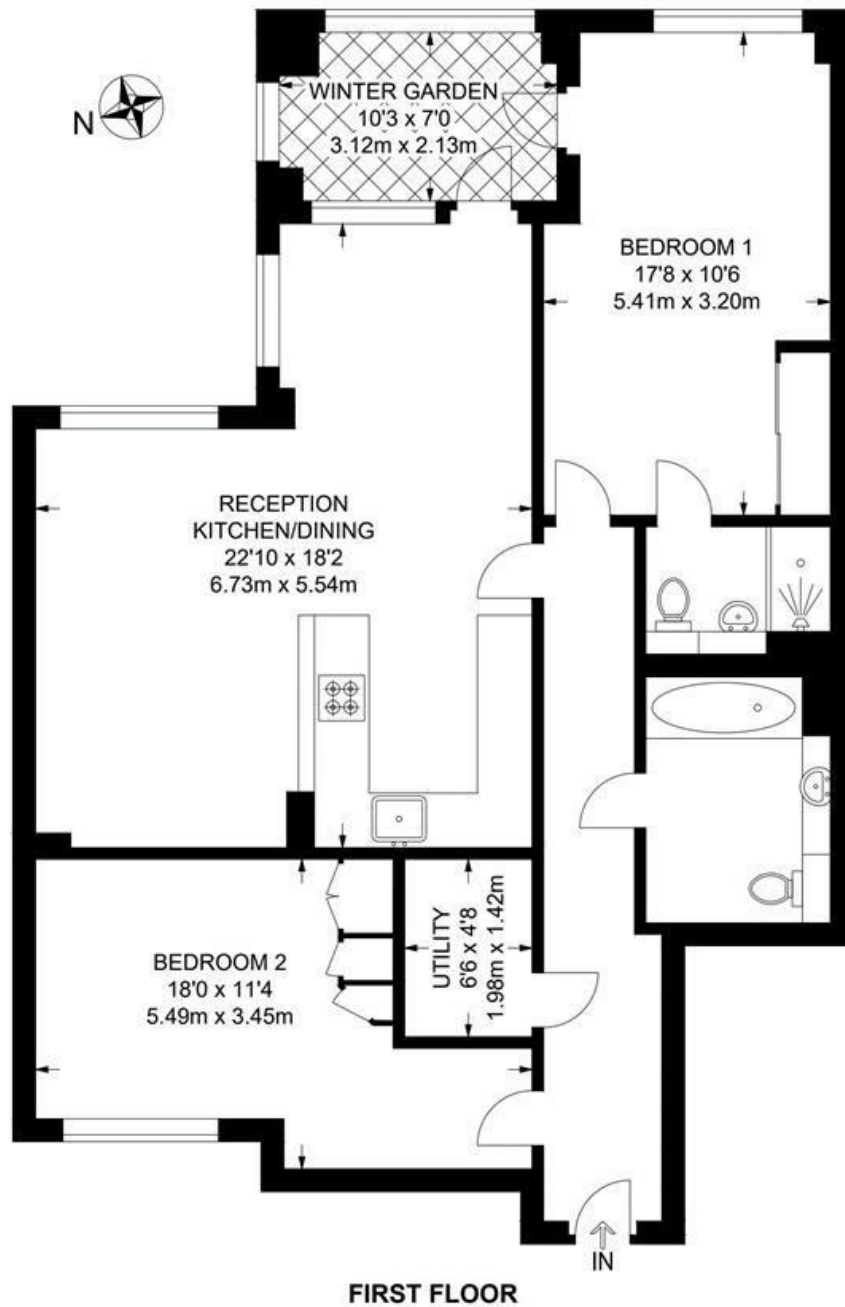


Stockwell Park Walk, Brixton, SW9

Stockwell Park Walk, SW9
2 Bedroom Flat

APPROXIMATE GROSS INTERNAL AREA WITH WINTER GARDEN : 1029 SQ FT / 95.6 SQ M

APPROXIMATE GROSS INTERNAL AREA WITHOUT WINTER GARDEN : 952 SQ FT / 88.5 SQ M



While we try our very best, floor plans are produced as a guide only and we take no responsibility for the precise accuracy with which any property is represented.

Stockwell Park Walk, Brixton, SW9

