



**Guide Price**  
**£280,000**

**Freehold**

2x  1x  1x 

**Wheeler Way, Shanklin,  
Isle of Wight, PO37**

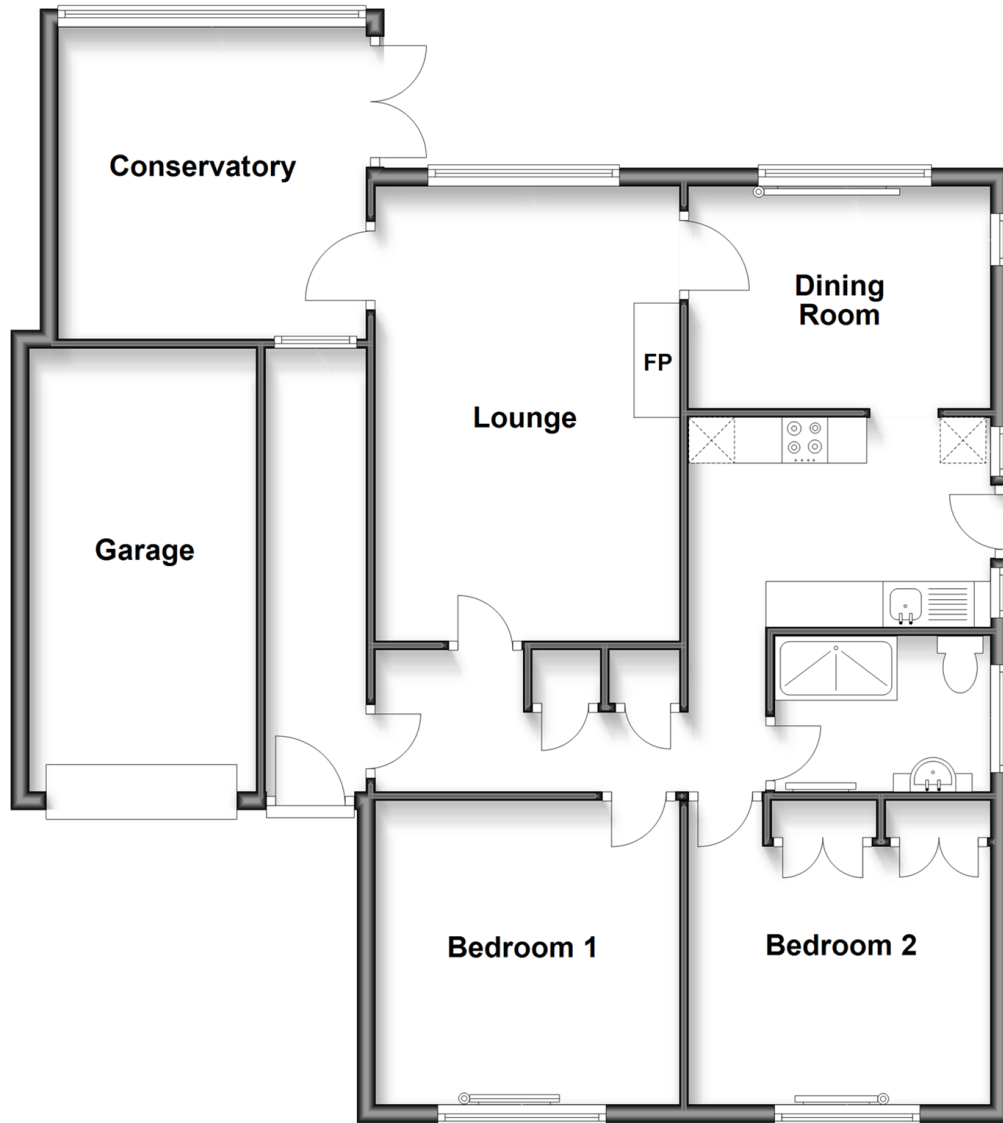
**OVER 60?**

Secure this property  
for up to **59% less!**

**Pittis**   
Helping you move forwards

## Ground Floor

Approx. 98.2 sq. metres (1056.7 sq. feet)



## Accommodation

### GROUND FLOOR

Hallway

Lounge: 15'10 x 10'11 (4.83m x 3.33m)

Conservatory: 11'0 x 10'6 (3.36m x 3.20m)

Dining Room: 10'10 x 7'11 (3.30m x 2.41m)

Kitchen: 11'2 x 7'2 (3.41m x 2.19m)

Bedroom 1: 10'10 x 10'10 (3.30m x 3.30m)

Bedroom 2: 10'10 x 10'9 (3.30m x 3.28m)

Shower Room

### OUTSIDE

Front & Rear Gardens

Garage & Driveway



## Main features

- Modern detached bungalow in a quiet cul de sac
- Conservatory to the rear overlooking the garden
- Good sized gardens to the front and rear
- Level access from the driveway with garage as well
- Ideal retirement home close to town



### Nearest Schools

The Bay CE School  
Shanklin C of E Primary Schools  
Gatten & Lake Primary School  
Shanklin Pre-School & Nursery  
Brading CE Primary School



### Transport Information

Local buses providing Island wide connections plus local train station with direct links to Ryde Pier Head.



### Address

Wheeler Way, Shanklin, Isle of Wight, PO37



### Directions

For directions to this property please contact us.

