





# RESIDE

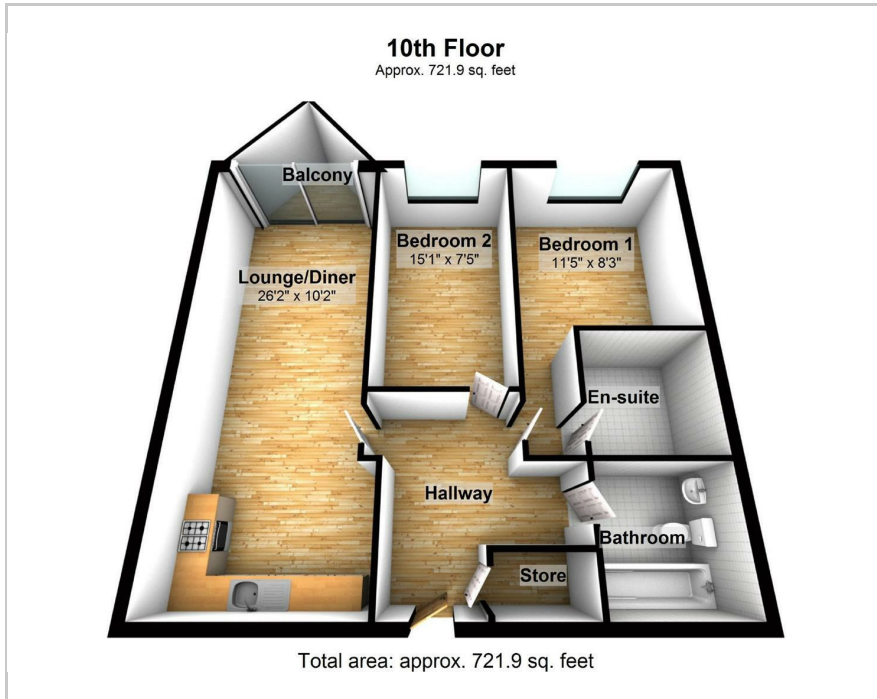
MANCHESTER



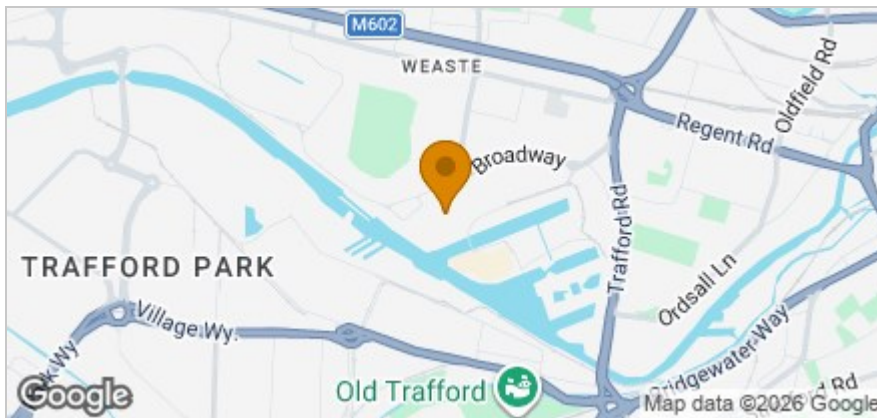
, Salford Quays, M50 2BA  
£1,195 PCM

 2  2  1  B

## Floor Plan



## Area Map



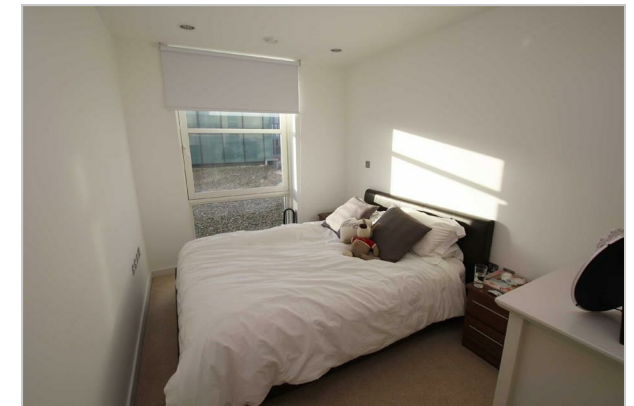
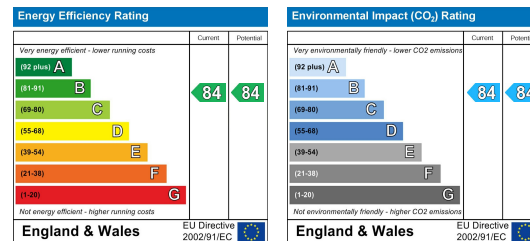
## Accommodation

- Two Bedrooms
- Two Bathrooms
- Open Plan Living
- Close to Public Transport
- Available 28th April 2026
- EPC Rating B
- Located In The Heart Of MediaCityUK
- Next To ITV & BBC Studios
- Private Balcony

## Viewing

Please contact our Reside Manchester Office on 0161 837 2840 if you wish to arrange a viewing appointment for this property or require further information.

## Energy Efficiency Graph



These particulars, whilst believed to be accurate are set out as a general outline only for guidance and do not constitute any part of an offer or contract. Intending purchasers should not rely on them as statements of representation of fact, but must satisfy themselves by inspection or otherwise as to their accuracy. No person in this firm's employment has the authority to make or give any representation or warranty in respect of the property.

Upper Ground, 4 Jordan Street, Manchester, Greater Manchester, M15 4PY

Tel: 0161 837 2840 Email: [info@residemanchester.com](mailto:info@residemanchester.com) [www.reside-property.com](http://www.reside-property.com)