



DURHAM TERRACE, W2

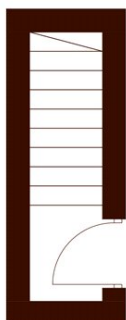
£1,850 per week (£8,016 per month)

A stunning architecturally designed two-bedroom duplex apartment set across the top two floors of an imposing period building on one of Notting Hill's prime residential streets.

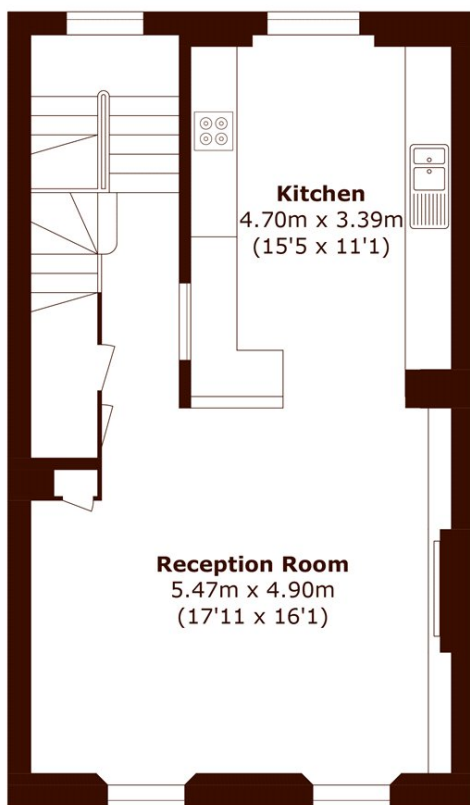
Two bedrooms
Exacting standard
Architecturally designed

Wooden floors
Prestigious address
Period building

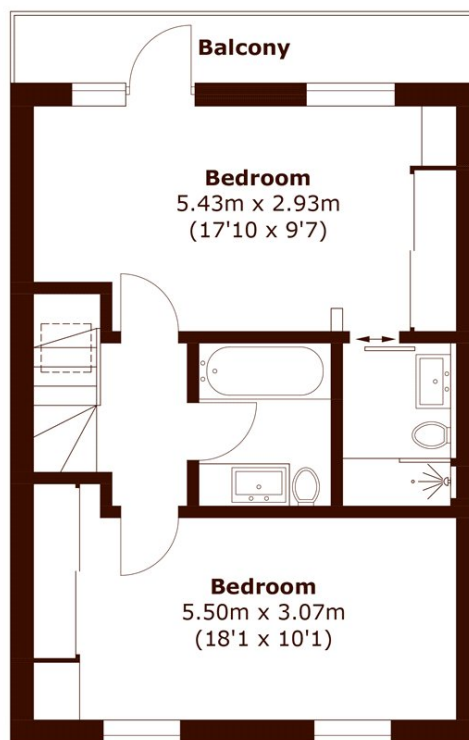
STEP INSIDE DURHAM TERRACE



Second Floor



Third Floor



Fourth Floor

Total area (approx.): 100.8 sq. m (1,085.0 sq. ft)
Balcony area (approx.): 5.3 sq. m (57.0 sq. ft)

Notting Hill
020 7313 6910

Energy Rating: D We aim to make our particulars both accurate and reliable. However, they are not guaranteed; nor do they form part of an offer or contract. If you require clarification on any points then please contact us, especially if you're traveling some distance to view. Please note that appliances and heating systems have not been tested and therefore no warranties can be given as to their good working order

**MARSH &
PARSONS**