



61 Shakespeare Street

Hove BN3 5AG

Asking Price Of £535,000

- THREE BEDROOMS
- BATHROOM
- KITCHEN
- LIVING/DINING ROOM
- CLOAKROOM
- PATIO GARDEN
- DESIRABLE LOCATION
- NO ONWARD CHAIN

Whitlock and Heaps are pleased to bring to market this end of terrace Victorian bay fronted property being situated in the favoured Poets Corner district of Hove and is being sold with no onward chain. The house features three double bedrooms with scope for a loft conversion (stnc). To the ground floor there is a delightful open plan living/dining room leading onto the kitchen which continues onto the private patio garden that benefits from a side access. Hove mainline station and seafront are both within a short walk along with an array of eateries, cafes and shopping facilities.

OUTSIDE

PATIO GARDEN Paved with gate offering a side access.

Council Tax Band C (taken from www.brighton-hove.gov.uk/council-tax).

We advise that you check this information, we will not be held responsible if the council tax band differs when occupying the property.

ENTRANCE HALL

KITCHEN Incorporating sink with drainer and mixer tap, adjacent wooden worksurface with cupboards and drawers under, matching eye level wall cupboards, inset four ring gas hob with extractor over, eye level oven, integrated fridge/freezer, space for dishwasher and space for washing machine, UPVC double glazed window, tiled splashback, door to garden.

CLOAKROOM Comprising low level w.c, wash hand basin, UPVC double glazed window, 'Worcester' gas fired boiler.

LIVING/DINING ROOM UPVC double glazed bay window, feature fireplace, two radiators, french doors to patio.

FIRST FLOOR

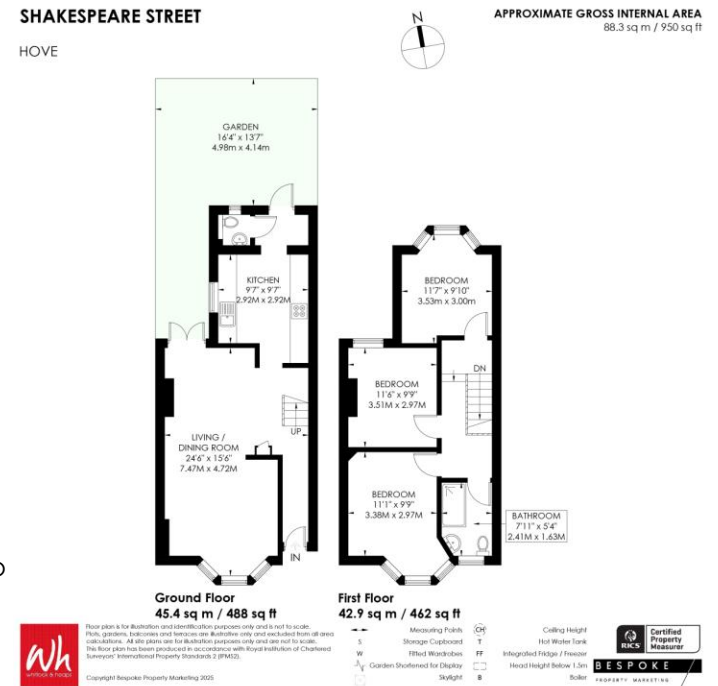
LANDING Hatch to loft space.

BEDROOM 1 UPVC double glazed bay window, radiator.

BEDROOM 2 UPVC double glazed bay window, radiator.

BEDROOM 3 Feature chimney breast, radiator, sash window.

BATHROOM White suite comprising panelled bath, glazed shower screen, pedestal wash hand basin, low level w.c, heated ladder style towel rails, tiled floor, part tiled walls, double glazed window.



Score	Energy rating	Current	Potential
92+	A		
81-91	B		
69-80	C		79 C
55-68	D	61 D	
39-54	E		
21-38	F		
1-20	G		

65 Sackville Road, Hove BN3 3WE
sales@whitlockandheaps.co.uk
 01273 778577



Disclaimer: Whitlock & Heaps have produced these particulars in good faith and they are set out as a general guide. Accuracy is not guaranteed, nor do they form part of any contract. If there is any particular aspect of these details which you require any confirmation, please do contact us, especially if contemplating a long journey. All measurements are approximate. Fixtures and fittings, other than those mentioned above, to be agreed with the seller. Any services, systems or appliances at the property have not been tested.