

HOME  TRUTHS



90 Church Road, Tarleton

Preston


£1,000 pcm



90 Church Road

Tarleton, Preston

Well-presented two-bedroom semi-detached property situated in the sought-after village of Tarleton, conveniently located for local amenities including shops, schools and transport links. Available to let immediately.

The property has recently been redecorated throughout and offers spacious accommodation ready for immediate occupation.

The ground floor comprises a generous lounge and dining room, together with a fitted kitchen featuring a range of wall and base units, integrated oven and grill, hob with extractor over, and space and plumbing for additional appliances.

To the first floor are two well-proportioned double bedrooms, one benefiting from built-in storage, and a modern three-piece bathroom comprising a panelled bath with shower over, wash hand basin and WC.

Externally, the property benefits from a private rear garden with patio and lawned areas, providing an ideal space for relaxing or entertaining. To the front is a driveway providing off-road parking.



90 Church Road

Tarleton, Preston

Well-presented two-bedroom semi-detached property situated in the sought-after village of Tarleton, conveniently located for local amenities including shops, schools and transport links. The property is available now and requires a deposit of £1,153, which includes a holding deposit of £230. Council Tax Band B. EPC Rating D.

- Virtual Tour
- Available Now
- Sought-After Village Location
- Close to Local Amenities, Schools & Transport Links
- Two Bedroom Semi-Detached Property

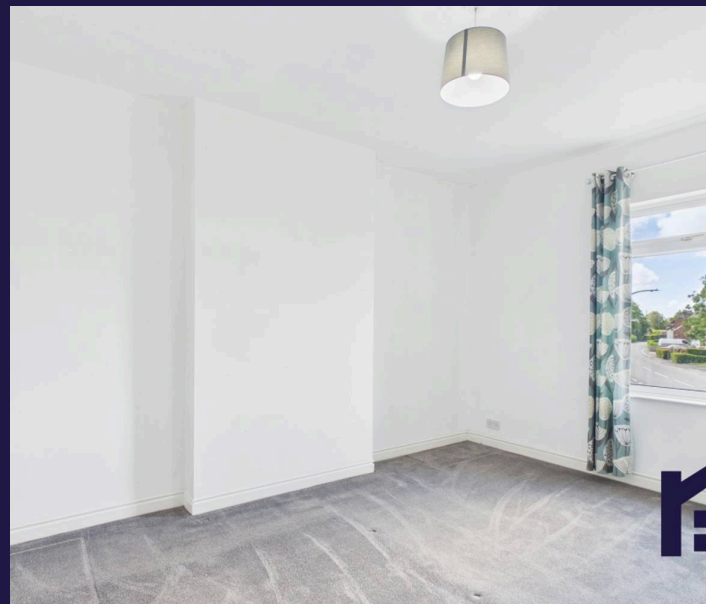


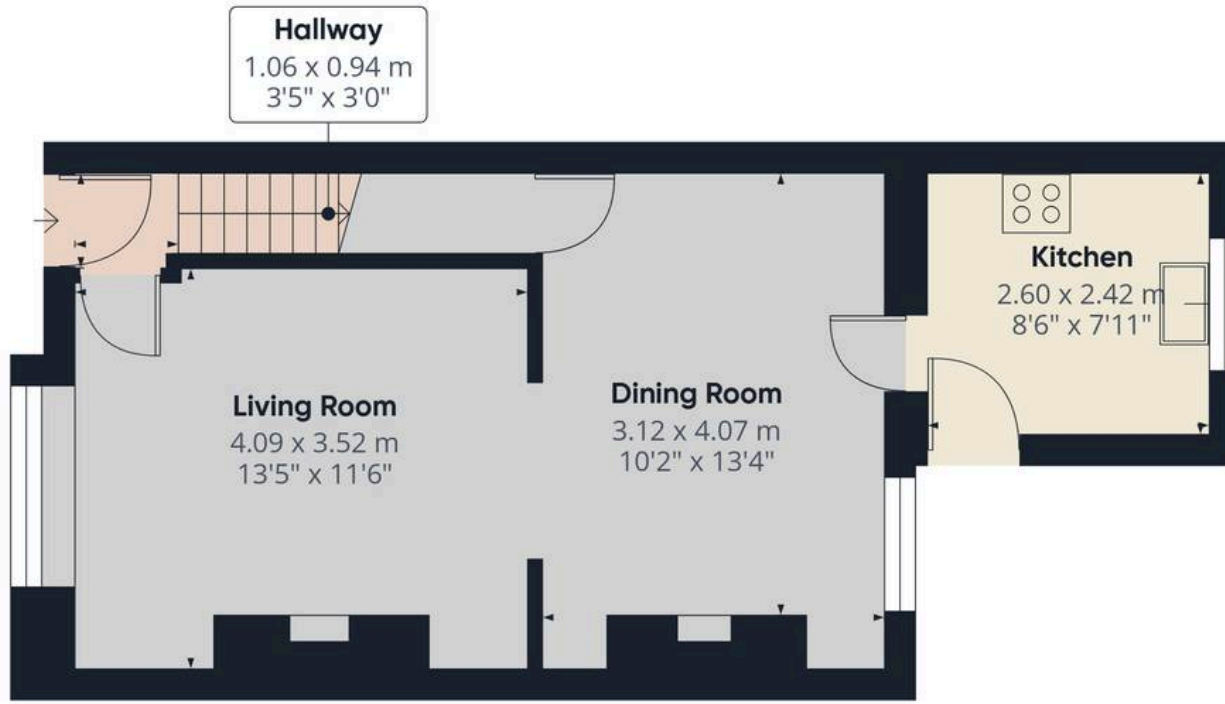
HOME  TRUTHS

Eccleston Branch
265 The Green, Eccleston, PR7 5TF
01257 451673

Coppull Branch
244 Spendmore Lane, Coppull, PR7 5DE
01257 794588

www.hometruthslancs.co.uk
office@hometruthslancs.co.uk





Floor 1



Floor 2



Approximate total area⁽¹⁾

72.1 m²

777 ft²

(1) Excluding balconies and terraces

Calculations reference the RICS IPMS 3C standard. Measurements are approximate and not to scale. This floor plan is intended for illustration only.

GIRAFFE360