



10 Little Croft, Whiston, L35

Asking Price £130,000



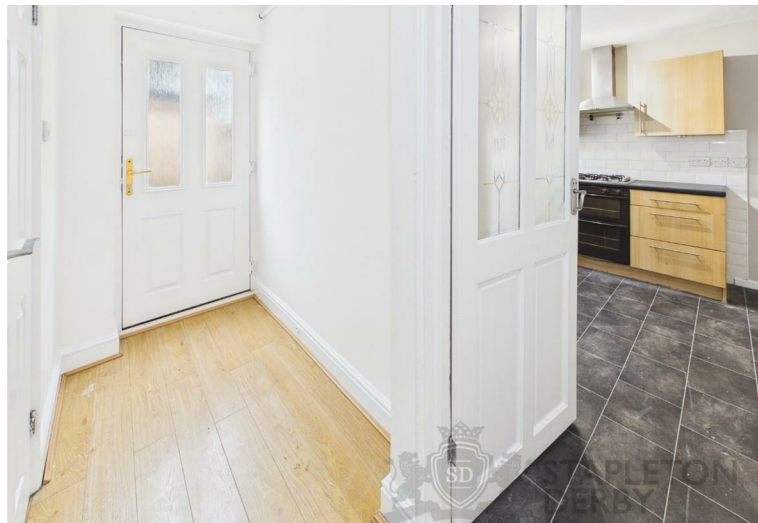
Situated in a highly sought-after area of Whiston, this deceptively spacious three-bedroom mid-terraced property offers an excellent opportunity for families, first-time buyers, or investors alike. Ideally positioned close to a range of local amenities, schools and transport links, the property provides both convenience and comfortable living.

Upon entering the property, you are welcomed by an entrance hallway which leads through to a generous living room, ideal for both relaxing and entertaining. The ground floor also benefits from a fitted kitchen offering ample storage and workspace, along with a conveniently located downstairs bathroom. To the first floor, the property continues to impress with three well-proportioned double bedrooms and a family bathroom, making it perfectly suited to growing families. Externally, the property features a front garden with parking situated slightly adjacent to the home. To the rear, there is a good-sized yard providing outdoor space, along with a detached brick shed which is ideal for additional storage.

This property is deceptively spacious throughout and must be viewed in person to fully appreciate the accommodation on offer.

Tenure is Freehold and the EPC is to be confirmed.

Early viewing is highly recommended to avoid disappointment.



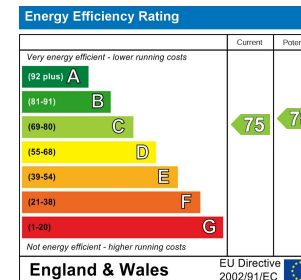






STANLEY DEVLON
ETON
Y

Stapleton Derby
497 Warrington Road Rainhill, Merseyside, L35 0LR
Tel: 0151 430 0717
office@stapletonderby.co.uk
www.stapletonderby.co.uk



IMPORTANT NOTICE TO PURCHASERS

We endeavor to make our sales particulars accurate and reliable, however, they do not constitute or form part of an offer or any contract and none is to be relied upon as statements of representation or fact. Any services, systems and appliances listed in this specification have not been tested by us and no guarantee as to their operating ability or efficiency is given. All measurements have been taken as a guide to prospective buyers only, and are not precise. If you require clarification or further information on any points please contact us. Fixtures and fittings other than those mentioned are to be agreed with the seller.