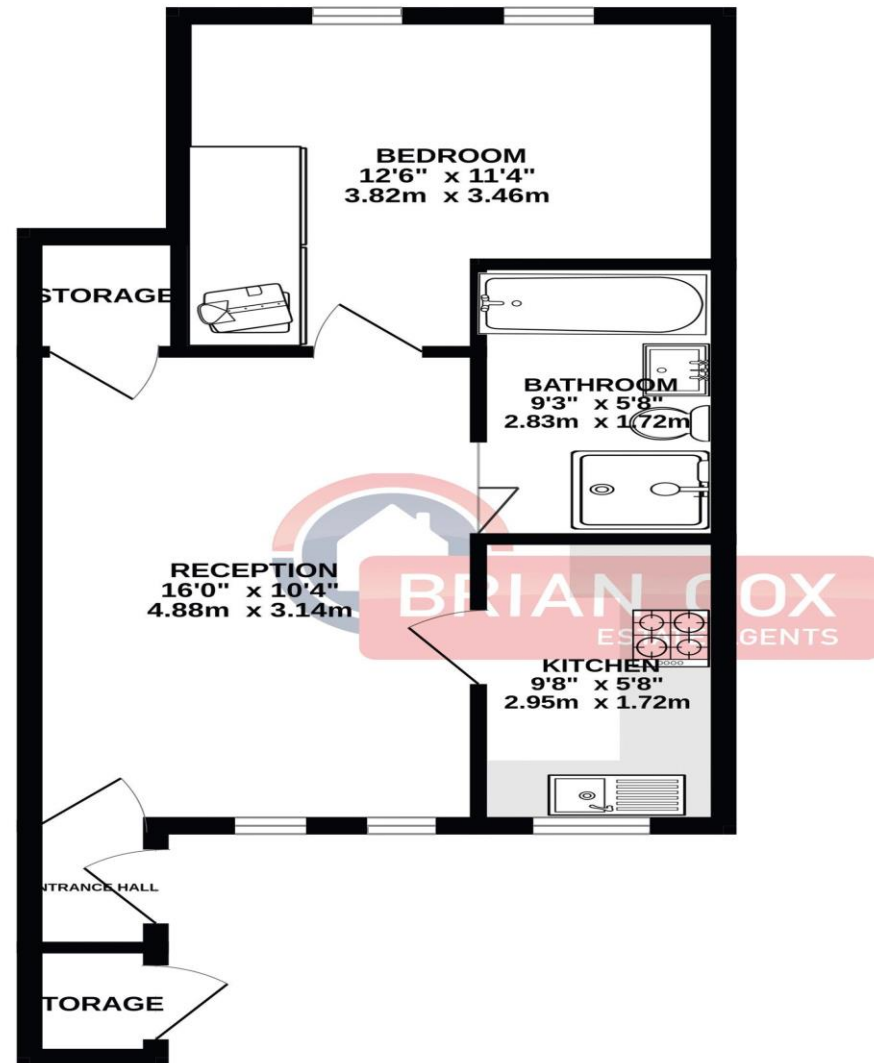


the floorplan...

GROUND FLOOR
484 sq.ft. (45.0 sq.m.) approx.



TOTAL FLOOR AREA : 484 sq.ft. (45.0 sq.m.) approx.
Whilst every attempt has been made to ensure the accuracy of the floorplan contained here, measurements of doors, windows, rooms and any other items are approximate and no responsibility is taken for any error, omission or mis-statement. This plan is for illustrative purposes only and should be used as such by any prospective purchaser. The services, systems and appliances shown have not been tested and no guarantee as to their operability or efficiency can be given.
Made with Metropix ©2026

more details from...

call: **Brian Cox Greenford: 0208 912 0006**
email: daniel.jed@brian-cox.co.uk
web: www.brian-cox.co.uk



0208 912 0006
brian-cox.co.uk



ONE BEDROOM - GROUND FLOOR
MAISONETTE - FRONT GARDEN. Brian Cox and Company are delighted to bring to the market this one bedroom ground floor maisonette. The property briefly consists of a lounge, double bedroom, four piece bathroom and fitted kitchen. Further benefits include double glazing, gas central heating front garden and parking. All in all this is an ideal home so call now to arrange your chance to view and avoid disappointment!!



£285,000
Leasehold

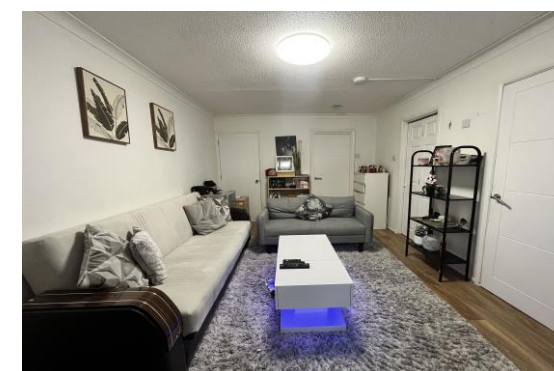
Palmerston Road, HA3 7RW

Consumer Protection from Unfair Trading Regulations 2008 We have not tested any apparatus, equipment, fixtures, fittings or services and so cannot verify that they are in working order or fit for purpose. You are advised to obtain verification from your solicitor or surveyor. References to the tenure of a property are based on information supplied by the seller. We have not had sight of the title documents and a buyer is advised to obtain verification from their solicitor. Items shown in photographs are not included unless specifically mentioned within the sales particulars, but may be available by separate negotiation. We advise you to book an appointment to view before embarking on any journey to see a property, and check its availability.



in brief...

- Ground Floor
- Parking
- Walking Distance to Station
- Low Service Charge
- Spacious Throughout
- Approx 145 Year Lease



the location...

nearest stations ...

Harrow & Wealdstone (0.2 miles)
Kenton (1.0 miles)
Harrow-on-the-Hill (1.0 miles)

Harrow Weald is an area in North West London, England. It includes a suburban development and forms part of the London Borough of Harrow.

Harrow Weald is near Bushey Heath, Stanmore, Wealdstone, Headstone and Hatch End. It is in the HA postcode area. The south of the area is a suburban development with houses, schools, small shops, supermarkets and pubs (notably the Weald Stone Inn, formerly the Red Lion).

Harrow has two large shopping centres which are St Anns and St Georges with its many large department stores, restaurants, cafes and cinema. You have a large Tesco's & Morrison's which are both within a short drive to the property.