



**Connells**

Compton Walk  
Laindon Basildon



### Property Description

We are delighted to present this highly versatile, four-bedroom semi-detached family home arranged over three distinct floors and situated on a substantial, enviable corner plot. Offering 1,256 sq.ft. of spacious living space, this property boasts an exceptional architectural layout with a downstairs shower room and an upper-level W.C. Perfect for growing families, this home offers fantastic potential to create your dream residence in a highly sought-after neighborhood.

**Exterior & Location:** Set on a substantial corner plot, the front boasts a secure, brick-paved gated driveway for multiple cars, while the rear features a mature, tiered garden with a patio and summerhouse. Perfect for families and commuters, this home is within easy walking distance of junior and senior schools, Laindon station and excellent local amenities including doctors, supermarkets and retail parks.

**Ground Floor:** A welcoming hallway leads into a sprawling 19ft lounge with a front bay window. The spacious kitchen features oak-effect cabinetry and integrated appliances, opening into a bright breakfast room with patio access and a convenient downstairs shower room.

**Upper Floors:** The first floor hosts a massive 16ft master bedroom with multi-aspect windows and a generous second double bedroom. The second floor dormer extension offers a flexible third bedroom or nursery, a well-proportioned fourth bedroom with sloped ceilings and a practical cloakroom serving both rooms.



**Hall**

**Kitchen**

15' 7" x 12' 1" ( 4.75m x 3.68m )

**Breakfast Room**

11' 2" x 9' 3" ( 3.40m x 2.82m )

**Lounge**

18' 11" x 11' 2" ( 5.77m x 3.40m )

**Shower Room**

6' 3" x 5' 7" ( 1.91m x 1.70m )

**Hall**

**Landing**

**Bedroom 1**

16' 2" x 9' 10" ( 4.93m x 3.00m )

**Bedroom 2**

11' 2" x 9' ( 3.40m x 2.74m )

**Bedroom 3**

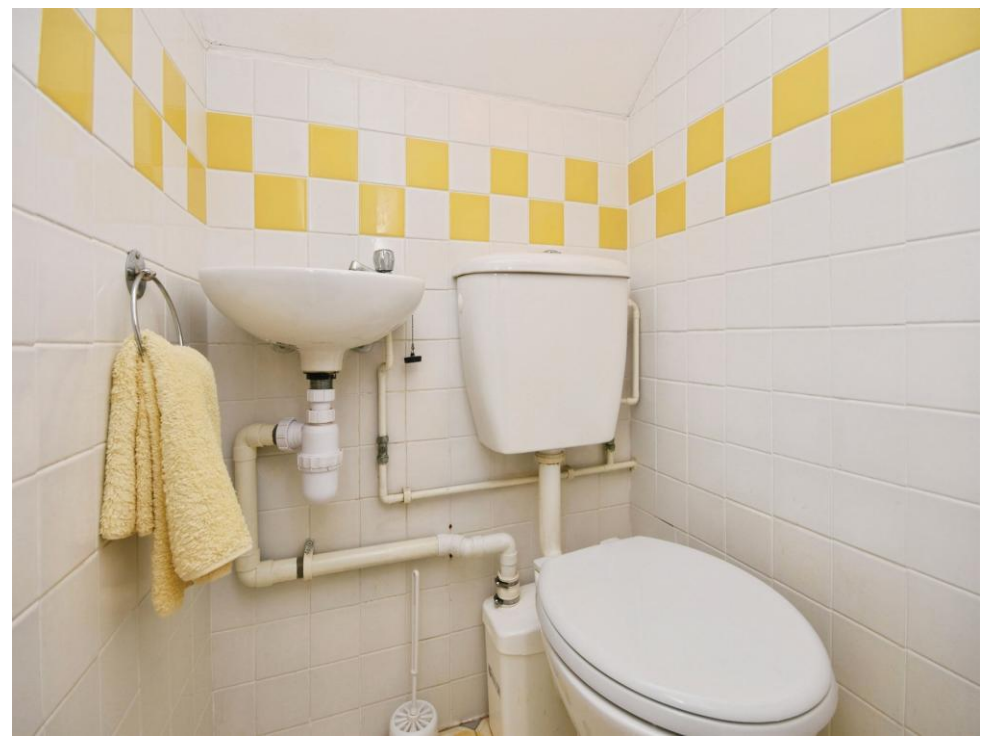
13' 5" x 6' 11" ( 4.09m x 2.11m )

**Bedroom 4**

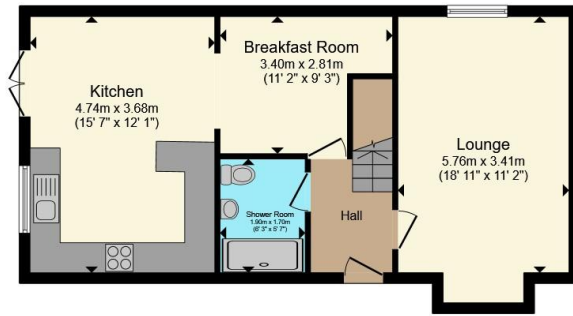
11' 6" x 7' 10" ( 3.51m x 2.39m )

**W.C.**

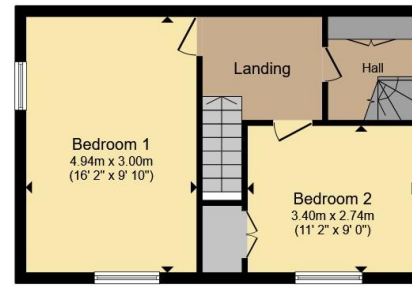




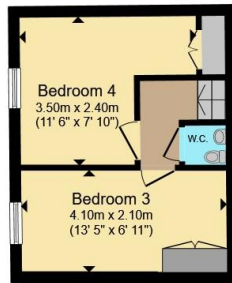




**Ground Floor**



**First Floor**



**Second Floor**

Total floor area 116.7 m<sup>2</sup> (1,256 sq.ft.) approx

This floor plan is for illustrative purposes only. It is not drawn to scale. Any measurements, floor areas (including any total floor area), openings and orientation are approximate. No details are guaranteed, they cannot be relied upon for any purpose and they do not form part of any agreement. No liability is taken for any error, omission or misstatement. A party must rely upon its own inspection(s). Powered by [www.propertybox.io](http://www.propertybox.io)



To view this property please contact Connells on

**T 01277 655 555**  
**E [billericay@connells.co.uk](mailto:billericay@connells.co.uk)**

96 High Street  
 BILLERICAY CM12 9BT

EPC Rating: D Council Tax  
 Band: D

Tenure: Freehold

**view this property online [connells.co.uk/Property/BCY308335](http://connells.co.uk/Property/BCY308335)**



1. MONEY LAUNDERING REGULATIONS Intending purchasers will be asked to produce identification documentation at a later stage and we would ask for your co-operation in order that there will be no delay in agreeing the sale. 2. These particulars do not constitute part or all of an offer or contract. 3. The measurements indicated are supplied for guidance only and as such must be considered incorrect. Potential buyers are advised to recheck measurements before committing to any expense. 4. We have not tested any apparatus, equipment, fixtures, fittings or services and it is in the buyers interest to check the working condition of any appliances.

Connells Residential is registered in England and Wales under company number 1489613, Registered Office is Cumbria House, 16-20 Hockliffe Street, Leighton Buzzard, Bedfordshire, LU7 1GN. VAT Registration Number is 500 2481 05.

**See all our properties at [www.connells.co.uk](http://www.connells.co.uk) | [www.rightmove.co.uk](http://www.rightmove.co.uk) | [www.zoopla.co.uk](http://www.zoopla.co.uk)**

Property Ref: BCY308335 - 0009